

Rhineland, WI • 1.05 +/- Acres

LAKE LOT FOR SALE



1.05 +/- Acres
Oneida County, WI

PRICE: \$124,900

Pifer's
AUCTION & REALTY

Pifer's Auction & Realty - Robert Scott Pifer, Broker (#56685-90)
1106 Mondovi Road #118 - Eau Claire, WI 54701
RE Entity License #937110-91, Auction Company License #429-53
Robert Scott Pifer Wisconsin Registered Auctioneer #2720-52



www.pifers.com
877.477.3105

Introduction

Property Note

Rhineland Flowage/WI River. Located on a quiet peninsula NW of Rhineland w/access to Boom Lake & the Rhineland Chain. It's time to get that waterfront property you've been wanting! Miles of boating/fishing pleasure in each direction. Motor right up to the restaurants/bars on the chain. 1.05 acre lot w/105.66 ft of frontage. Sand bottom! 3 car garage (30x26) w/ electricity, cement floor & 8ft tall garage doors perfect for all the toys. Lot lays out nicely for a walkout/exposed lower level & faces west for all the sunsets you can handle. Great fishing right off the dock. Bass, pike, crappies, bluegills. Panfish spawn right out in front of it. Musky caught around the corner. Dock not incl. in sale. Neighbor currently shares driveway access off Eagles Bluff Rd but can be addressed.



Brett Gill

608.346.8263

brettgill@pifers.com

Pifer's
AUCTION & REALTY

4107 Windmill Lane • Janesville, WI 53546

Property Information

5726 Eagles Bluff Rd. • Rhinelander, WI

Acres: 1.05 +/-

Water/Waste: None

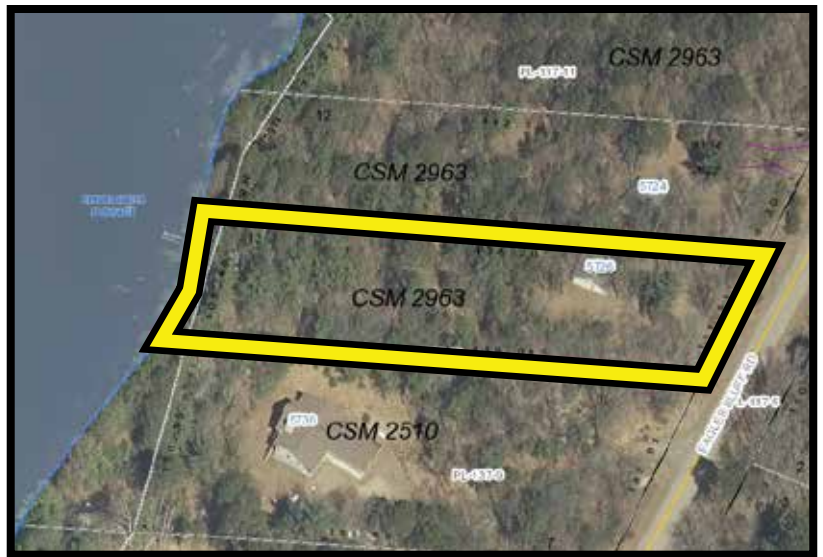
Driveway: Dirt

Garage: 3 car (30'x 26') with electricity

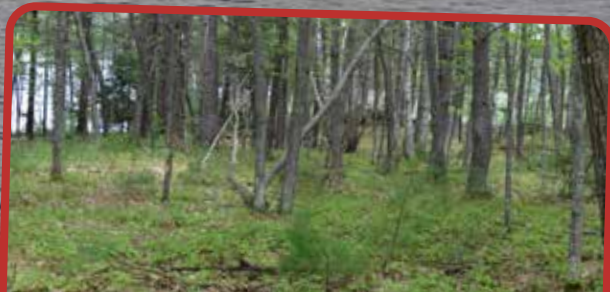
Legals: PT G.L. 2 & PT SE NW Lot 13 CSM V12

Parcel #: PL-137-13

Taxes (2019): \$1,350.00



*Great Opportunity to Build
Your Dream Home!*



www.pifers.com

877.477.3105

Pifer's

AUCTION & REALTY



Pifer's
AUCTION & REALTY

Pifer's Auction & Realty - Robert Scott Pifer, *Broker* (#56685-90)
1106 Mondovi Road #118 - Eau Claire, WI 54701
RE Entity License #937110-91, Auction Company License #429-53
Robert Scott Pifer Wisconsin Registered Auctioneer #2720-52



www.pifers.com
877.477.3105