

Palermo, ND • 160 +/- Acres

LAND FOR SALE

Quality grass & hunting land near Palermo, ND



PRICE: \$220,000

160 +/- Acres • Mountrail County, ND



Pifer's
AUCTION & REALTY



1506 29th Ave. S • Moorhead, MN

877.700.4099

www.pifers.com

Introduction

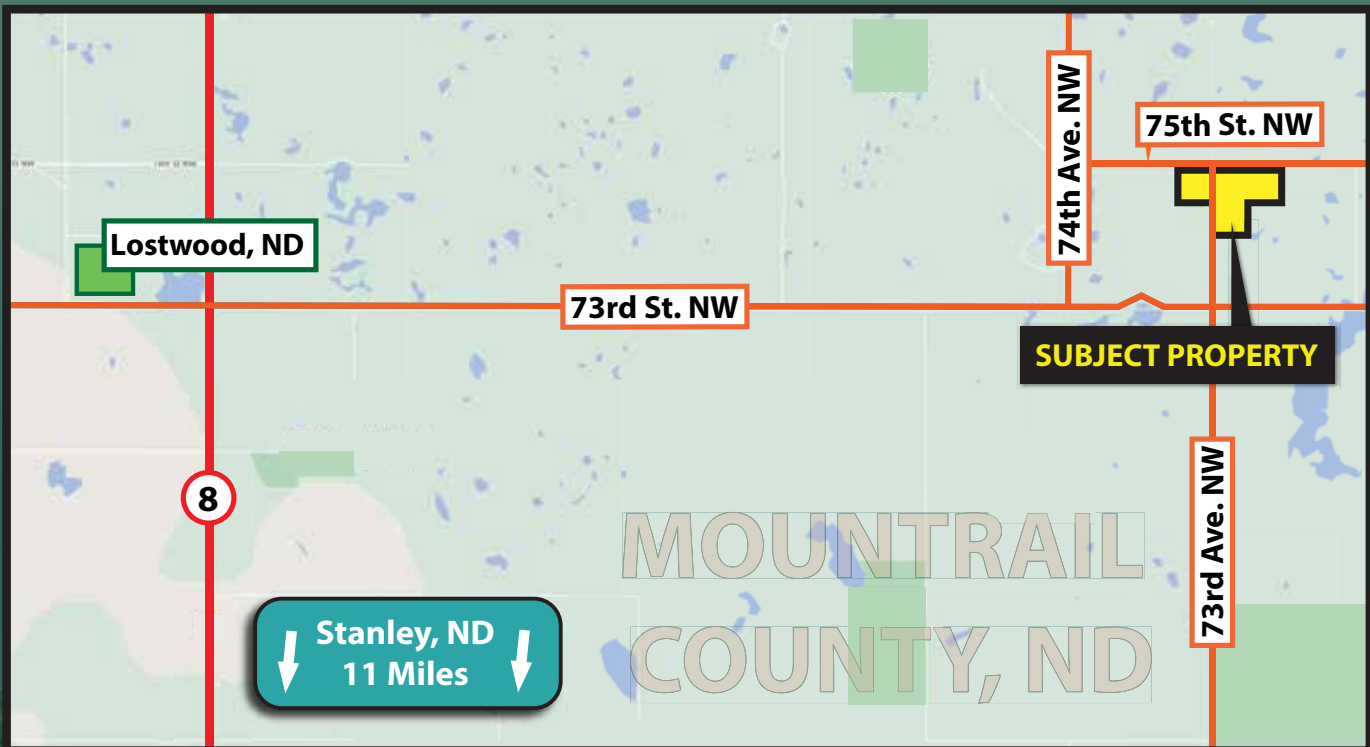
Property Note

Grass and hunting land for sale in Mountrail County! Excellent land for pasture and hunting habitat for deer, upland birds and waterfowl hunting with native grasses and water sources. Southwest water runs along the road past the property.

160 +/- Acres • Mountrail County, ND

Driving Directions:

From Stanley, ND go north 10 miles on Highway 8 to 73rd/75th St NW and go east 7 miles and then go north 1 mile on 74th/73rd Ave NW. This will bring you to the north end of the property.



BOB PIFER

*Broker/Auctioneer
Personal Property*

Cell: 701.371.8538
Office: 877.477.3105
bpifer@pifers.com

**A great addition to the portfolios
of investors and producers!**

Pifer's
AUCTION & REALTY

www.pifers.com

877.700.4099

Overall Property

Acres: 160 +/-
Legal: NE $\frac{1}{4}$ NE $\frac{1}{4}$ 26-158-90
N $\frac{1}{2}$ NW $\frac{1}{4}$ & NE $\frac{1}{4}$ NE $\frac{1}{4}$ 25-158-90
Crop Acres: 17.03 +/-
Grassland Acres: 17.03 +/-
Taxes (2020): \$221.83



GREAT HUNTING HABITAT

1506 29th Ave. S • Moorhead, MN

Pifer's

AUCTION & REALTY



www.pifers.com • 877.700.4099
1506 29th Ave. S • Moorhead, MN