

Pingree, ND • 160 +/- Acres

LAND FOR SALE

The property is currently enrolled in The Conservation Reserve Program



PRICE: \$240,000

160 +/- Acres • Stutsman County, ND



Pifer's
AUCTION & REALTY



1506 29th Ave. S • Moorhead, MN

877.700.4099

www.pifers.com

Introduction

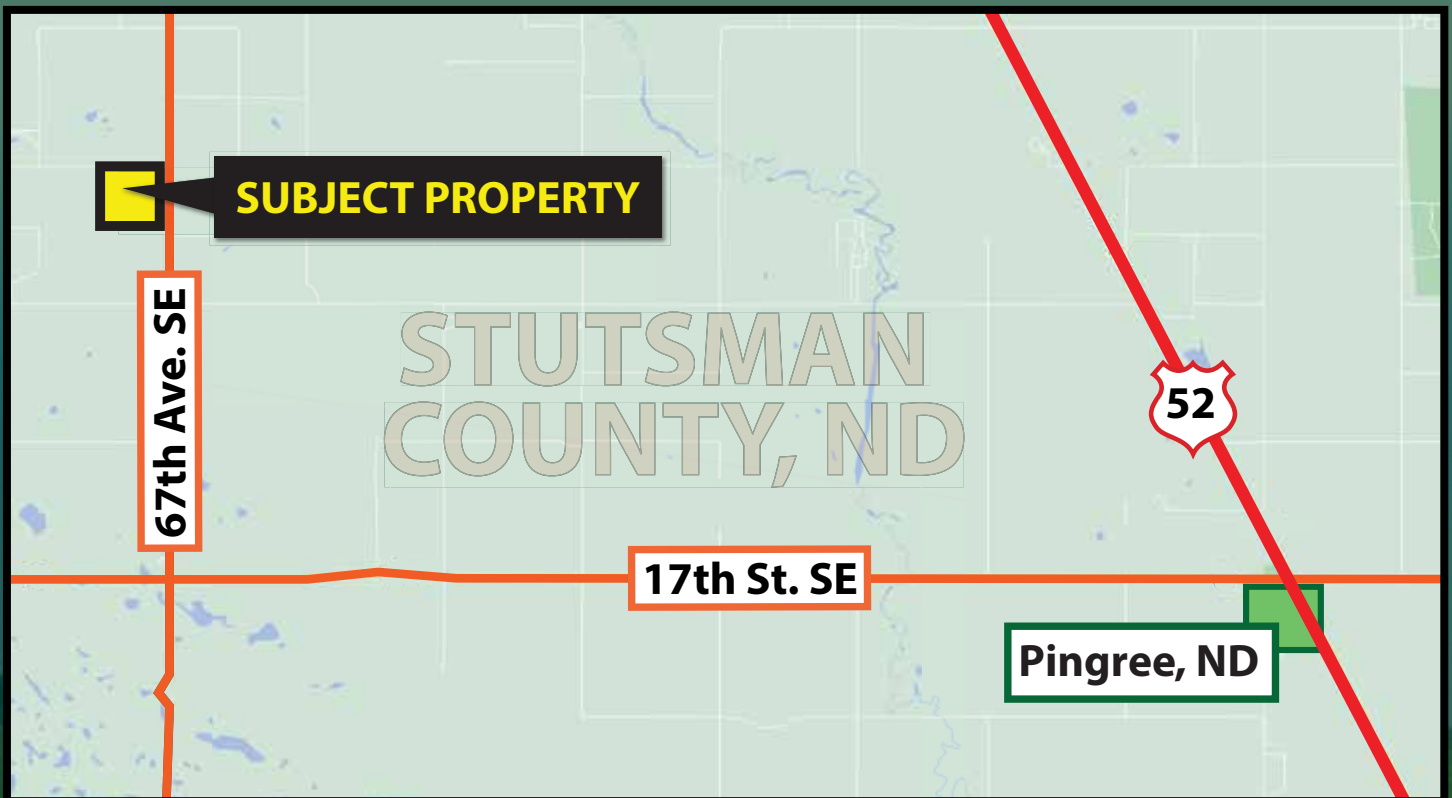
Property Note

This parcel features 160 +/- acres of land in Pipestem Township. The property is currently enrolled in The Conservation Reserve Program (CRP) and Private Land Open To Sportsmen (PLOTS) that expires on September 30, 2027. Being enrolled in the CRP Program, half of the property may be cut for forage each year if buyer elected to do so. Not only does this property provide great habitat for deer and other wildlife, it also boasts a great income.

160 +/- Acres • Stutsman County, ND

Driving Directions:

From Pingree, ND drive west on 17th St. SE (Hwy. #36) for 8 miles to 67th Ave. SE then turn right and drive north for 2.5 miles. This will put you at the southeast corner of the parcel.



STEVE LINK

Broker

Cell: 701.361.9985
Office: 877.700.4099
stlink@pifers.com



DARIN PETERSON

Realtor

Cell: 701.220.5396
Office: 701.475.7653
darin@pifers.com



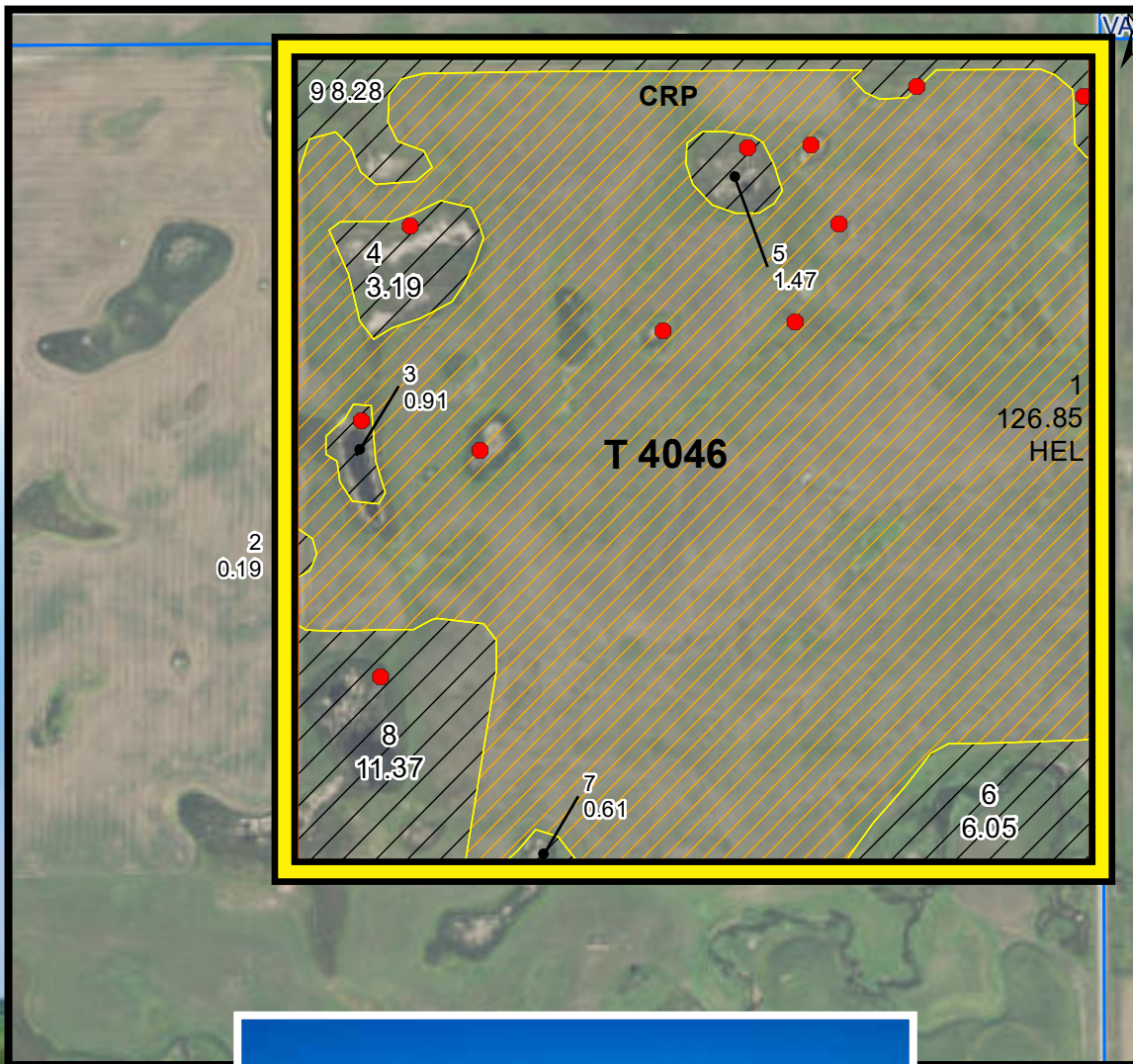
Pifer's
AUCTION & REALTY

www.pifers.com

877.700.4099

Overall Property

Acres: 160 +/-
Legal: NE1/4 18-143-66
CRP Acres: 126.85 +/- Acres @ \$66.00/acre = \$8,372.10 Annually - Expires: 9/30/2027
Taxes (2020): \$619.83



1506 29th Ave. S • Moorhead, MN

Pifer's

AUCTION & REALTY



www.pifers.com • 877.700.4099
1506 29th Ave. S • Moorhead, MN