

**Wilkin County
Minnesota**

Farm 8854

Tract 8498

S5 T136 R47

Phy. County: Wilkin, MN

2026 Program Year

2023 NAIP Imagery

Map Created 04/15/2026



- Unless Otherwise Noted:
 All fields are non-irrigated
 Shares are 100% to operator
 Corn = Yellow for Grain
 Soybeans = Common for Grain
 Wheat = HRS, HRW = Grain
 Sunflowers = Oil, Non-Oil = Grain
 Oats & Barley = Spring for Grain
 Canola = Spring for Seed
 Alfalfa = For Forage
 Mix Forage AGM, GMA, IGS = for Forage
 Rye = for Grain
 Peas = Process
 Beans = Dry Edible
 Native Annual Grass = for Grazing

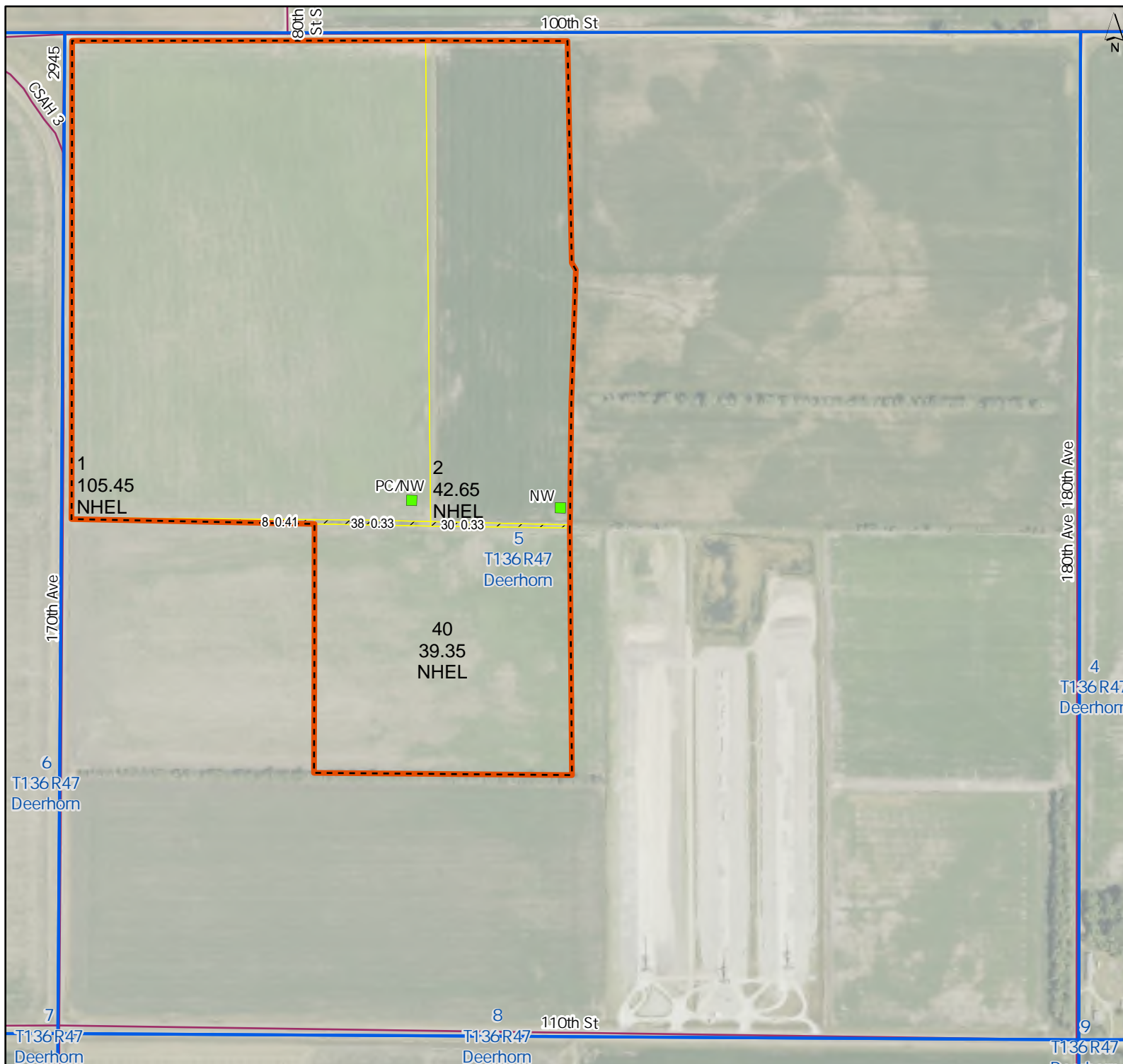
PARCELS 1 & 4

- Tract Boundary
- Noncropland
- Cropland
- PLSS

Wetland Determination Identifiers

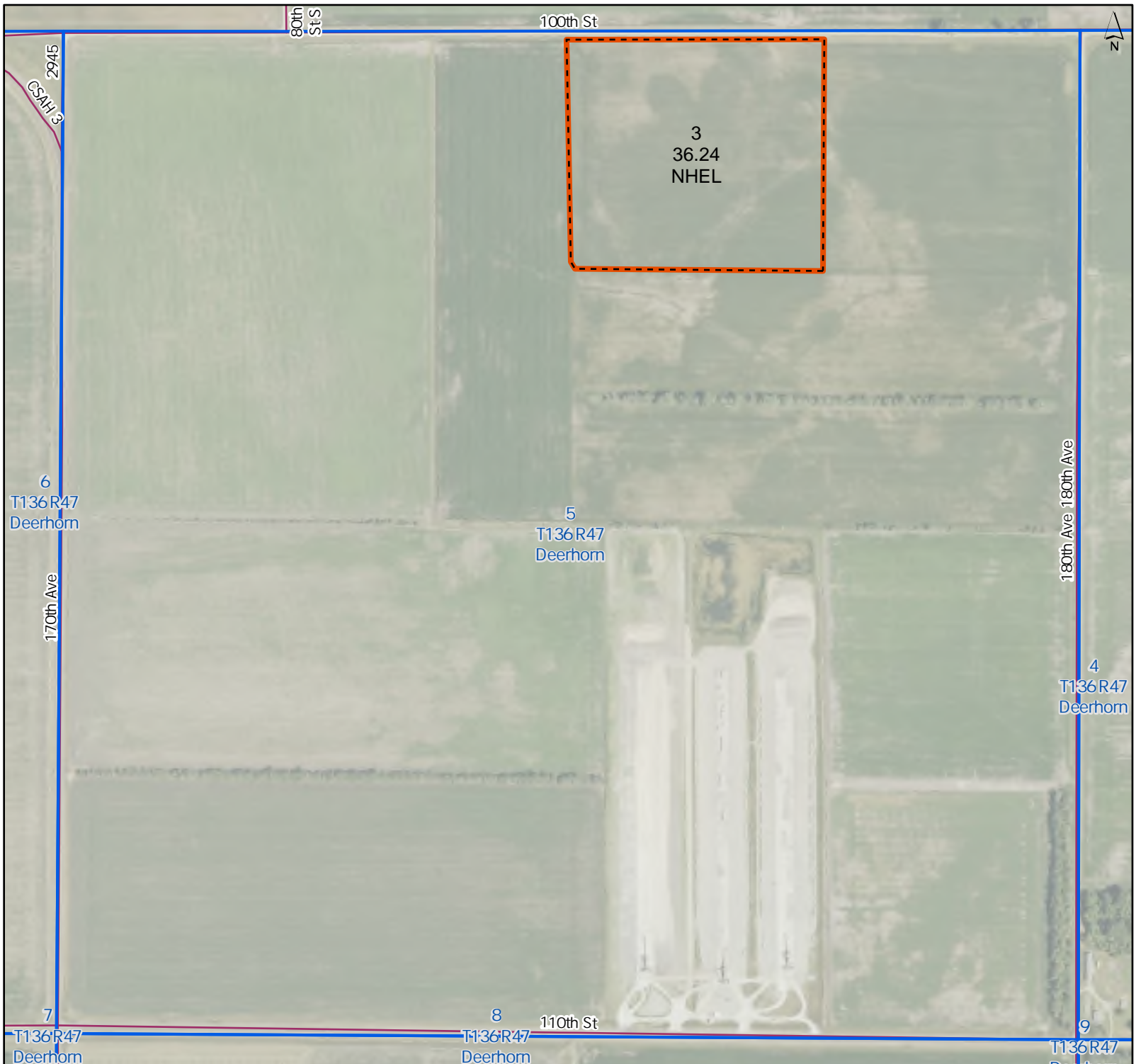
- Restricted Use
- Limited Restrictions
- Exempt from Conservation Compliance Provisions

Tract Cropland Total: 187.45 acres



United States Department of Agriculture (USDA) Farm Service Agency (FSA) maps are for FSA Program administration only. This map does not represent a legal survey or reflect actual ownership; rather it depicts the information provided directly from the producer and/or National Agricultural Imagery Program (NAIP) imagery. The producer accepts the data 'as is' and assumes all risks associated with its use. USDA-FSA assumes no responsibility for actual or consequential damage incurred as a result of any user's reliance on this data outside FSA Programs. Wetland identifiers do not represent the size, shape, or specific determination of the area. Refer to your original determination (CPA-026 and attached maps) for exact boundaries and determinations or contact USDA NRCS. USDA is an equal opportunity provider, employer, and lender.





**Wilkin County
Minnesota**

Farm 8760

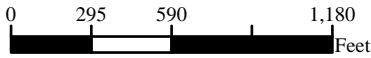
Tract 8489

S5 T136 R47

Phy. County: Wilkin, MN

2026 Program Year

2023 NAIP Imagery
Map Created 04/15/2026



- Unless Otherwise Noted:
- All fields are non-irrigated
 - Shares are 100% to operator
 - Corn = Yellow for Grain
 - Soybeans = Common for Grain
 - Wheat = HRS, HRW = Grain
 - Sunflowers = Oil, Non-Oil = Grain
 - Oats & Barley = Spring for Grain
 - Canola = Spring for Seed
 - Alfalfa = For Forage
 - Mix Forage AGM, GMA, IGS = for Forage
 - Rye = for Grain
 - Peas = Process
 - Beans = Dry Edible
 - Native Annual Grass = for Grazing

PARCEL 2

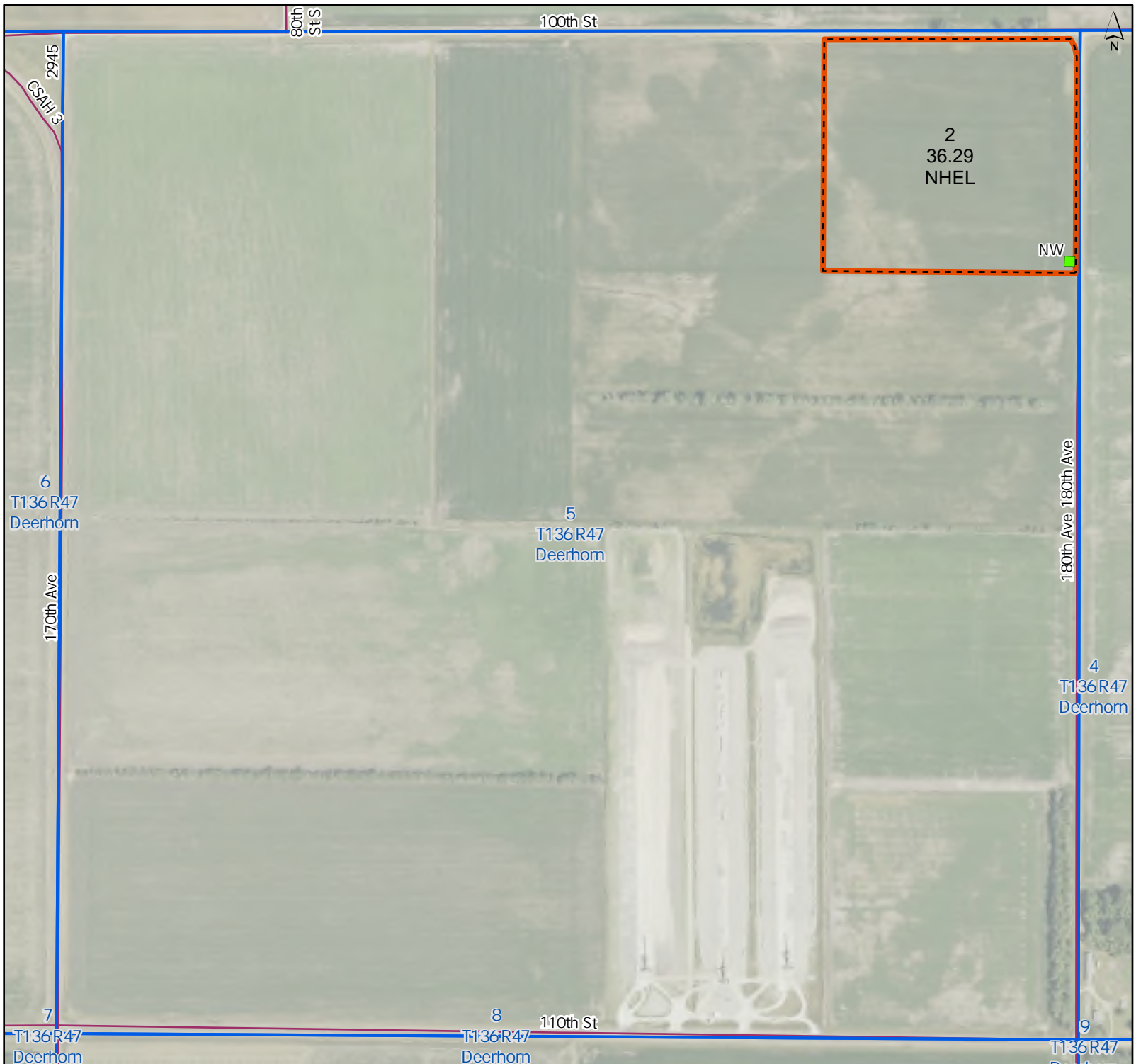
- Tract Boundary
- Cropland
- PLSS

- Wetland Determination Identifiers**
- Restricted Use
 - Limited Restrictions
 - Exempt from Conservation Compliance Provisions

Tract Cropland Total: 36.24 acres

United States Department of Agriculture (USDA) Farm Service Agency (FSA) maps are for FSA Program administration only. This map does not represent a legal survey or reflect actual ownership; rather it depicts the information provided directly from the producer and/or National Agricultural Imagery Program (NAIP) imagery. The producer accepts the data 'as is' and assumes all risks associated with its use. USDA-FSA assumes no responsibility for actual or consequential damage incurred as a result of any user's reliance on this data outside FSA Programs. Wetland identifiers do not represent the size, shape, or specific determination of the area. Refer to your original determination (CPA-026 and attached maps) for exact boundaries and determinations or contact USDA NRCS. USDA is an equal opportunity provider, employer, and lender.





**Wilkin County
Minnesota**

Farm 8760

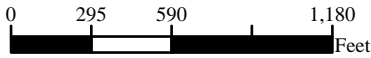
Tract 8488

S5 T136 R47

Phy. County: Wilkin, MN

2026 Program Year

2023 NAIP Imagery
Map Created 04/15/2026



- Unless Otherwise Noted:
- All fields are non-irrigated
 - Shares are 100% to operator
 - Corn = Yellow for Grain
 - Soybeans = Common for Grain
 - Wheat = HRS, HRW = Grain
 - Sunflowers = Oil, Non-Oil = Grain
 - Oats & Barley = Spring for Grain
 - Canola = Spring for Seed
 - Alfalfa = For Forage
 - Mix Forage AGM, GMA, IGS = for Forage
 - Rye = for Grain
 - Peas = Process
 - Beans = Dry Edible
 - Native Annual Grass = for Grazing

PARCEL 2

- Tract Boundary
- Cropland
- PLSS

- Wetland Determination Identifiers**
- Restricted Use
 - Limited Restrictions
 - Exempt from Conservation Compliance Provisions

Tract Cropland Total: 36.29 acres

United States Department of Agriculture (USDA) Farm Service Agency (FSA) maps are for FSA Program administration only. This map does not represent a legal survey or reflect actual ownership; rather it depicts the information provided directly from the producer and/or National Agricultural Imagery Program (NAIP) imagery. The producer accepts the data 'as is' and assumes all risks associated with its use. USDA-FSA assumes no responsibility for actual or consequential damage incurred as a result of any user's reliance on this data outside FSA Programs. Wetland identifiers do not represent the size, shape, or specific determination of the area. Refer to your original determination (CPA-026 and attached maps) for exact boundaries and determinations or contact USDA NRCS. USDA is an equal opportunity provider, employer, and lender.



**Wilkin County
Minnesota**

Farm 8854

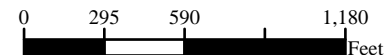
Tract 4544

S5 T136 R47

Phy. County: Wilkin, MN

2026 Program Year

2023 NAIP Imagery
Map Created 04/15/2026



- Unless Otherwise Noted:
 All fields are non-irrigated
 Shares are 100% to operator
 Corn = Yellow for Grain
 Soybeans = Common for Grain
 Wheat = HRS, HRW = Grain
 Sunflowers = Oil, Non-Oil = Grain
 Oats & Barley = Spring for Grain
 Canola = Spring for Seed
 Alfalfa = For Forage
 Mix Forage AGM, GMA, IGS = for Forage
 Rye = for Grain
 Peas = Process
 Beans = Dry Edible
 Native Annual Grass = for Grazing

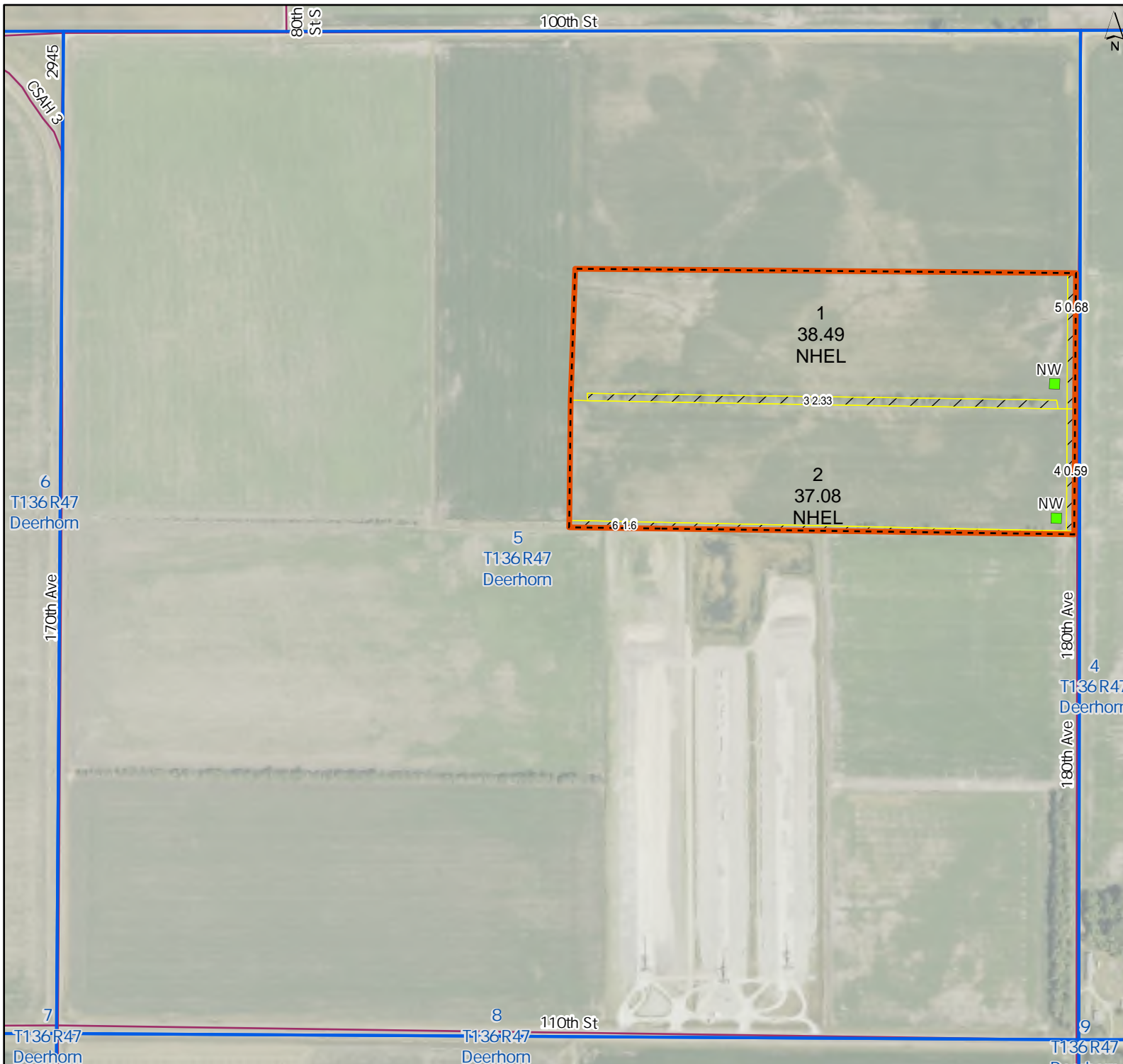
PARCEL 3

- Tract Boundary
- Noncropland
- Cropland
- PLSS

Wetland Determination Identifiers

- Restricted Use
- Limited Restrictions
- Exempt from Conservation Compliance Provisions

Tract Cropland Total: 75.57 acres



United States Department of Agriculture (USDA) Farm Service Agency (FSA) maps are for FSA Program administration only. This map does not represent a legal survey or reflect actual ownership; rather it depicts the information provided directly from the producer and/or National Agricultural Imagery Program (NAIP) imagery. The producer accepts the data 'as is' and assumes all risks associated with its use. USDA-FSA assumes no responsibility for actual or consequential damage incurred as a result of any user's reliance on this data outside FSA Programs. Wetland identifiers do not represent the size, shape, or specific determination of the area. Refer to your original determination (CPA-026 and attached maps) for exact boundaries and determinations or contact USDA NRCS. USDA is an equal opportunity provider, employer, and lender.



**Wilkin County
Minnesota**

Farm 8854

Tract 8491

S5 T136 R47

Phy. County: Wilkin, MN

2026 Program Year

2023 NAIP Imagery

Map Created 04/15/2026



- Unless Otherwise Noted:
- All fields are non-irrigated
 - Shares are 100% to operator
 - Corn = Yellow for Grain
 - Soybeans = Common for Grain
 - Wheat = HRS, HRW = Grain
 - Sunflowers = Oil, Non-Oil = Grain
 - Oats & Barley = Spring for Grain
 - Canola = Spring for Seed
 - Alfalfa = For Forage
 - Mix Forage AGM, GMA, IGS = for Forage
 - Rye = for Grain
 - Peas = Process
 - Beans = Dry Edible
 - Native Annual Grass = for Grazing

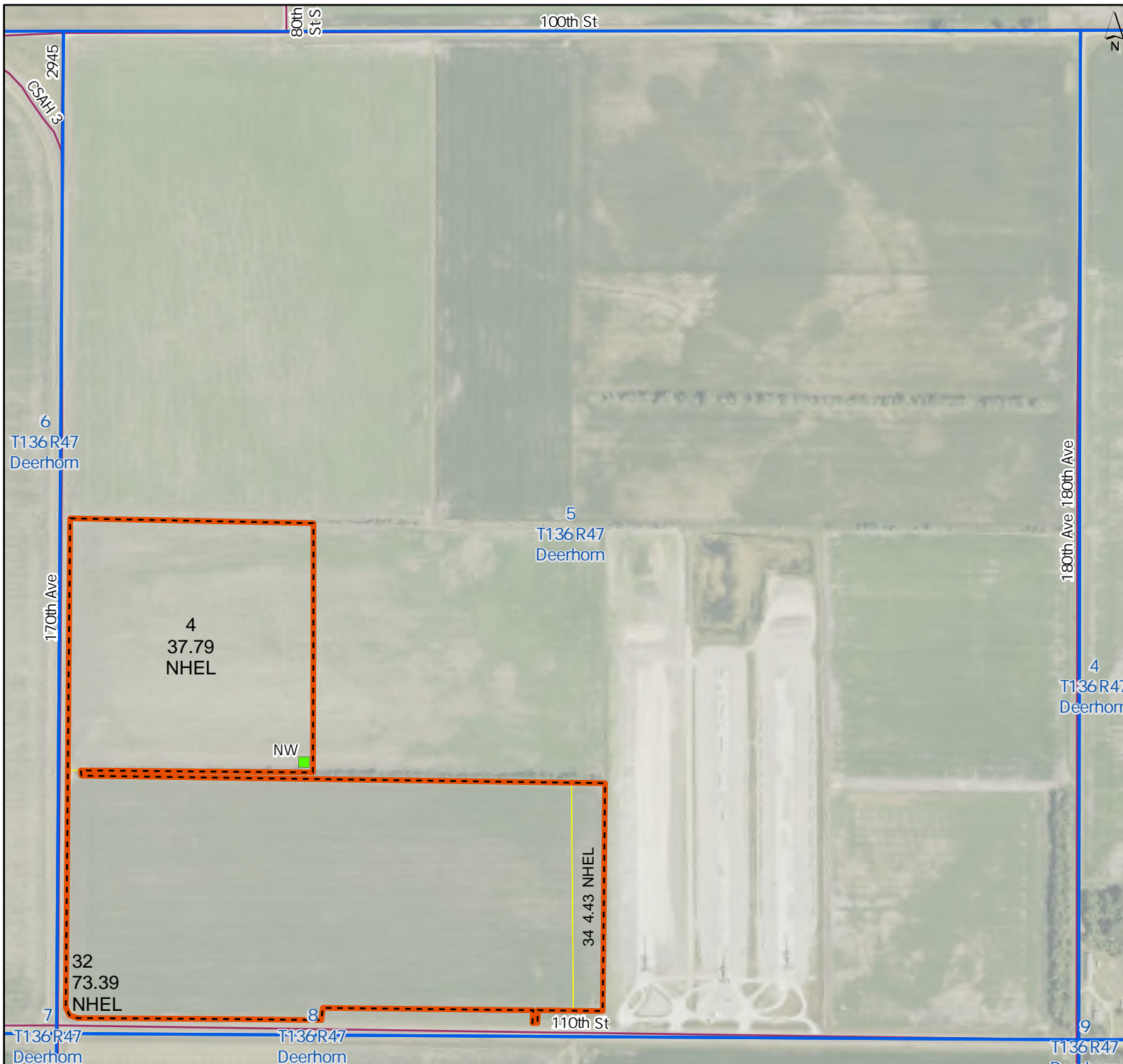
PARCEL 4

- Tract Boundary
- Cropland
- PLSS

Wetland Determination Identifiers

- Restricted Use
- Limited Restrictions
- Exempt from Conservation Compliance Provisions

Tract Cropland Total: 115.61 acres



United States Department of Agriculture (USDA) Farm Service Agency (FSA) maps are for FSA Program administration only. This map does not represent a legal survey or reflect actual ownership; rather it depicts the information provided directly from the producer and/or National Agricultural Imagery Program (NAIP) imagery. The producer accepts the data 'as is' and assumes all risks associated with its use. USDA-FSA assumes no responsibility for actual or consequential damage incurred as a result of any user's reliance on this data outside FSA Programs. Wetland identifiers do not represent the size, shape, or specific determination of the area. Refer to your original determination (CPA-026 and attached maps) for exact boundaries and determinations or contact USDA NRCS. USDA is an equal opportunity provider, employer, and lender.



**Wilkin County
Minnesota**

Farm 8854

Tract 8500

S5 T136 R47

Phy. County: Wilkin, MN

2026 Program Year

2023 NAIP Imagery

Map Created 04/15/2026



- Unless Otherwise Noted:
- All fields are non-irrigated
 - Shares are 100% to operator
 - Corn = Yellow for Grain
 - Soybeans = Common for Grain
 - Wheat = HRS, HRW = Grain
 - Sunflowers = Oil, Non-Oil = Grain
 - Oats & Barley = Spring for Grain
 - Canola = Spring for Seed
 - Alfalfa = For Forage
 - Mix Forage AGM, GMA, IGS = for Forage
 - Rye = for Grain
 - Peas = Process
 - Beans = Dry Edible
 - Native Annual Grass = for Grazing

PARCEL 4

Tract Boundary

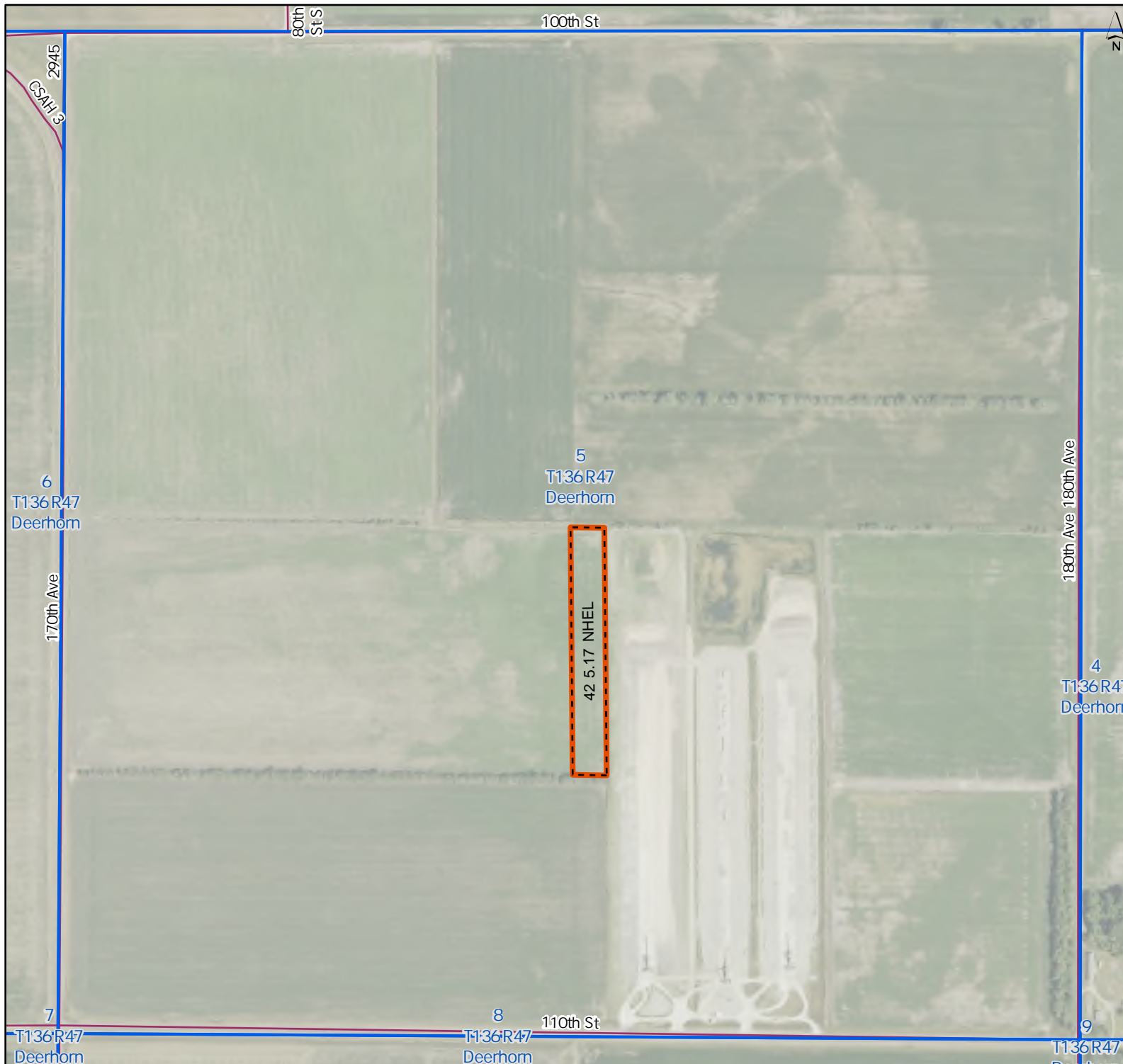
Cropland

PLSS

Wetland Determination Identifiers

- Restricted Use
- Limited Restrictions
- Exempt from Conservation Compliance Provisions

Tract Cropland Total: 5.17 acres



United States Department of Agriculture (USDA) Farm Service Agency (FSA) maps are for FSA Program administration only. This map does not represent a legal survey or reflect actual ownership; rather it depicts the information provided directly from the producer and/or National Agricultural Imagery Program (NAIP) imagery. The producer accepts the data 'as is' and assumes all risks associated with its use. USDA-FSA assumes no responsibility for actual or consequential damage incurred as a result of any user's reliance on this data outside FSA Programs. Wetland identifiers do not represent the size, shape, or specific determination of the area. Refer to your original determination (CPA-026 and attached maps) for exact boundaries and determinations or contact USDA NRCS. USDA is an equal opportunity provider, employer, and lender.



**Wilkin County
Minnesota**

Farm 8854

Tract 8496

S5 T136 R47

Phy. County: Wilkin, MN

2026 Program Year

2023 NAIP Imagery

Map Created 04/15/2026



- Unless Otherwise Noted:
- All fields are non-irrigated
 - Shares are 100% to operator
 - Corn = Yellow for Grain
 - Soybeans = Common for Grain
 - Wheat = HRS, HRW = Grain
 - Sunflowers = Oil, Non-Oil = Grain
 - Oats & Barley = Spring for Grain
 - Canola = Spring for Seed
 - Alfalfa = For Forage
 - Mix Forage AGM, GMA, IGS = for Forage
 - Rye = for Grain
 - Peas = Process
 - Beans = Dry Edible
 - Native Annual Grass = for Grazing

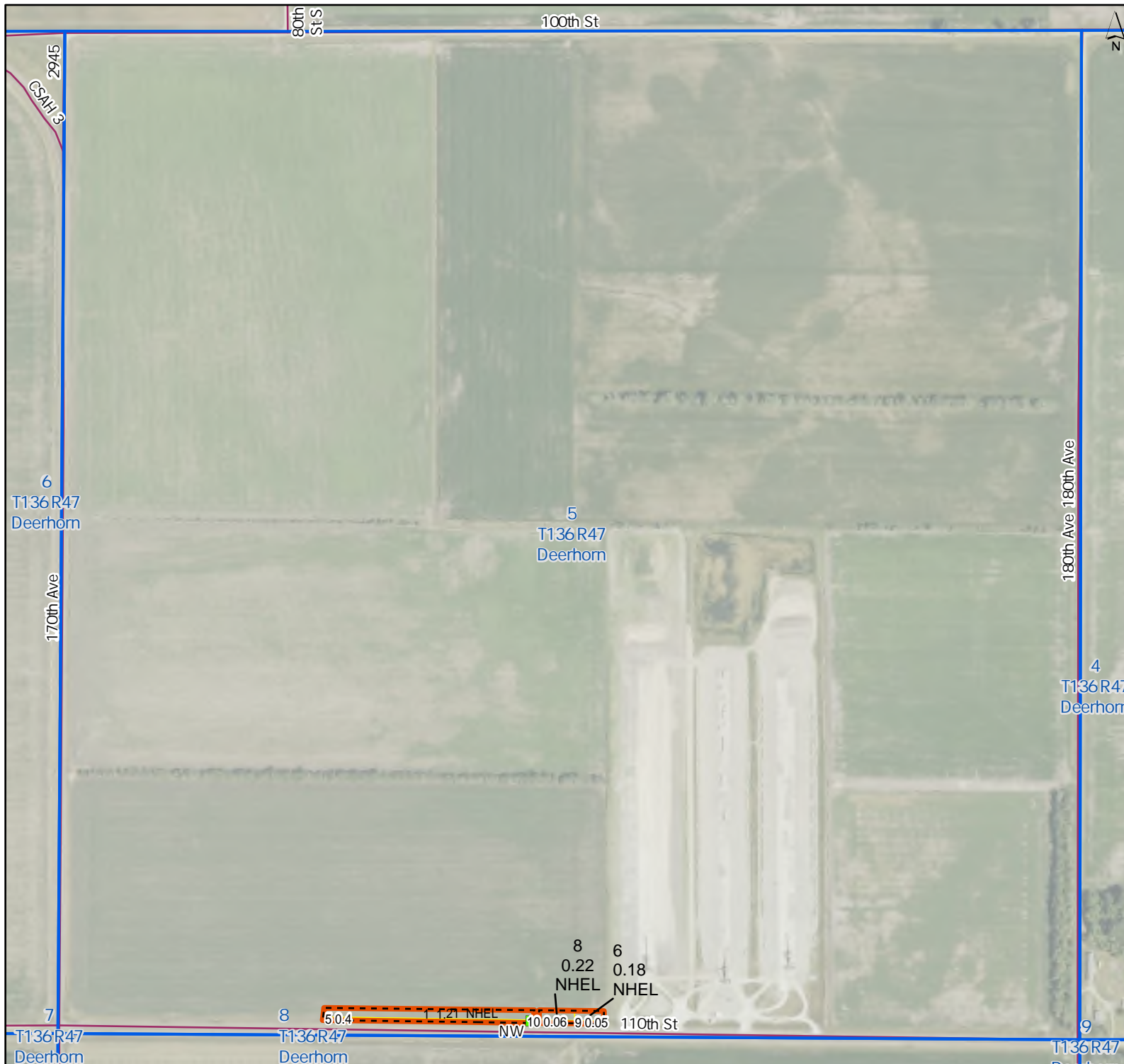
PARCEL 4

- Tract Boundary
- Noncropland
- Cropland
- PLSS

Wetland Determination Identifiers

- Restricted Use
- Limited Restrictions
- Exempt from Conservation Compliance Provisions

Tract Cropland Total: 1.61 acres



United States Department of Agriculture (USDA) Farm Service Agency (FSA) maps are for FSA Program administration only. This map does not represent a legal survey or reflect actual ownership; rather it depicts the information provided directly from the producer and/or National Agricultural Imagery Program (NAIP) imagery. The producer accepts the data 'as is' and assumes all risks associated with its use. USDA-FSA assumes no responsibility for actual or consequential damage incurred as a result of any user's reliance on this data outside FSA Programs. Wetland identifiers do not represent the size, shape, or specific determination of the area. Refer to your original determination (CPA-026 and attached maps) for exact boundaries and determinations or contact USDA NRCS. USDA is an equal opportunity provider, employer, and lender.



**Wilkin County
Minnesota**

Farm 8854

Tract 6816

S5 T136 R47

Phy. County: Wilkin, MN

2026 Program Year

2023 NAIP Imagery

Map Created 04/15/2026



- Unless Otherwise Noted:
All fields are non-irrigated
Shares are 100% to operator
Corn = Yellow for Grain
Soybeans = Common for Grain
Wheat = HRS, HRW = Grain
Sunflowers = Oil, Non-Oil = Grain
Oats & Barley = Spring for Grain
Canola = Spring for Seed
Alfalfa = For Forage
Mix Forage AGM, GMA, IGS = for Forage
Rye = for Grain
Peas = Process
Beans = Dry Edible
Native Annual Grass = for Grazing

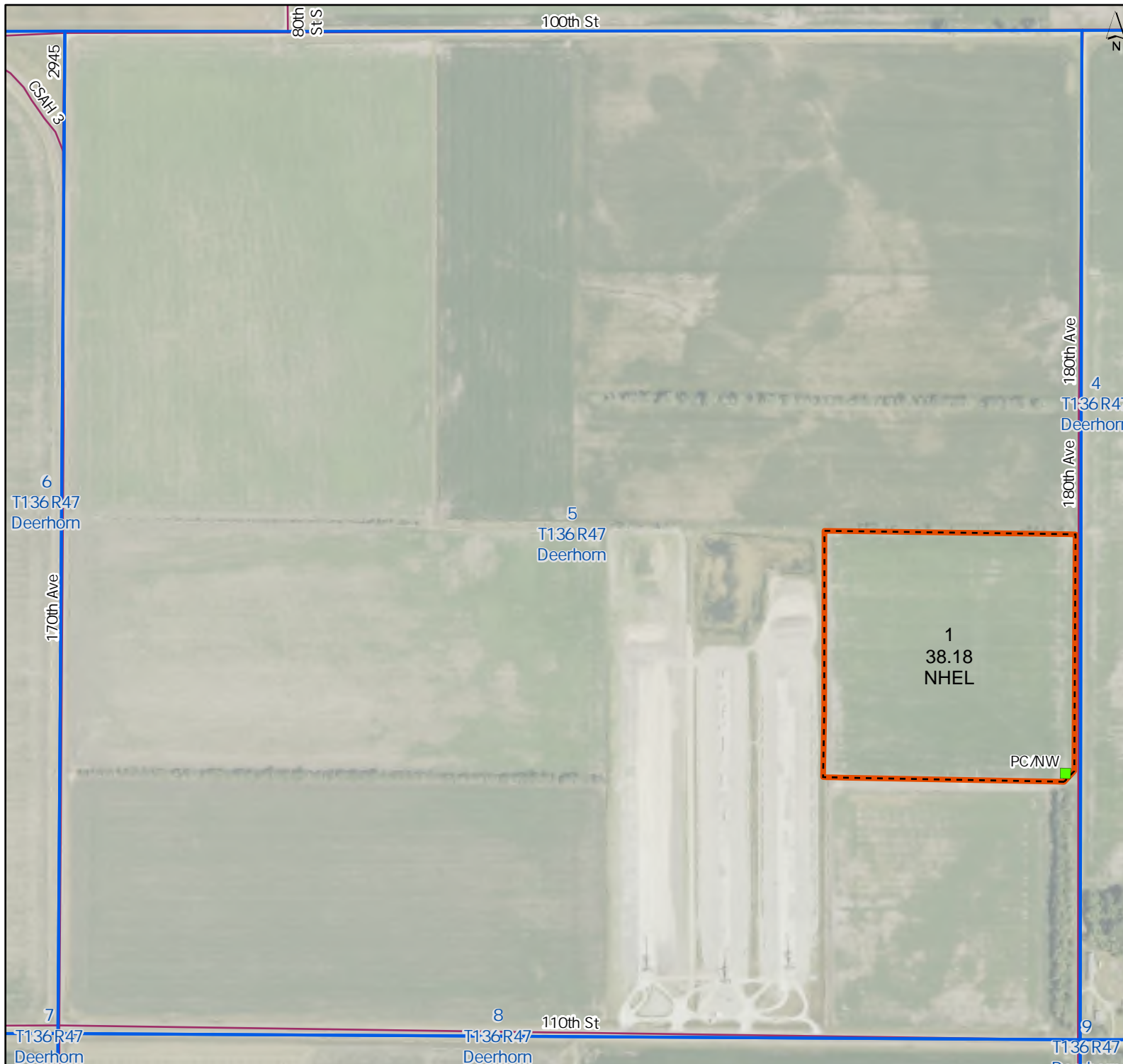
PARCEL 5

- Tract Boundary
- Cropland
- PLSS

Wetland Determination Identifiers

- Restricted Use
- Limited Restrictions
- Exempt from Conservation Compliance Provisions

Tract Cropland Total: 38.18 acres



United States Department of Agriculture (USDA) Farm Service Agency (FSA) maps are for FSA Program administration only. This map does not represent a legal survey or reflect actual ownership; rather it depicts the information provided directly from the producer and/or National Agricultural Imagery Program (NAIP) imagery. The producer accepts the data 'as is' and assumes all risks associated with its use. USDA-FSA assumes no responsibility for actual or consequential damage incurred as a result of any user's reliance on this data outside FSA Programs. Wetland identifiers do not represent the size, shape, or specific determination of the area. Refer to your original determination (CPA-026 and attached maps) for exact boundaries and determinations or contact USDA NRCS. USDA is an equal opportunity provider, employer, and lender.



**Wilkin County
Minnesota**

Farm 8854

Tract 8494

S5 T136 R47

Phy. County: Wilkin, MN

2026 Program Year

2023 NAIP Imagery

Map Created 04/15/2026



- Unless Otherwise Noted:
- All fields are non-irrigated
 - Shares are 100% to operator
 - Corn = Yellow for Grain
 - Soybeans = Common for Grain
 - Wheat = HRS, HRW = Grain
 - Sunflowers = Oil, Non-Oil = Grain
 - Oats & Barley = Spring for Grain
 - Canola = Spring for Seed
 - Alfalfa = For Forage
 - Mix Forage AGM, GMA, IGS = for Forage
 - Rye = for Grain
 - Peas = Process
 - Beans = Dry Edible
 - Native Annual Grass = for Grazing

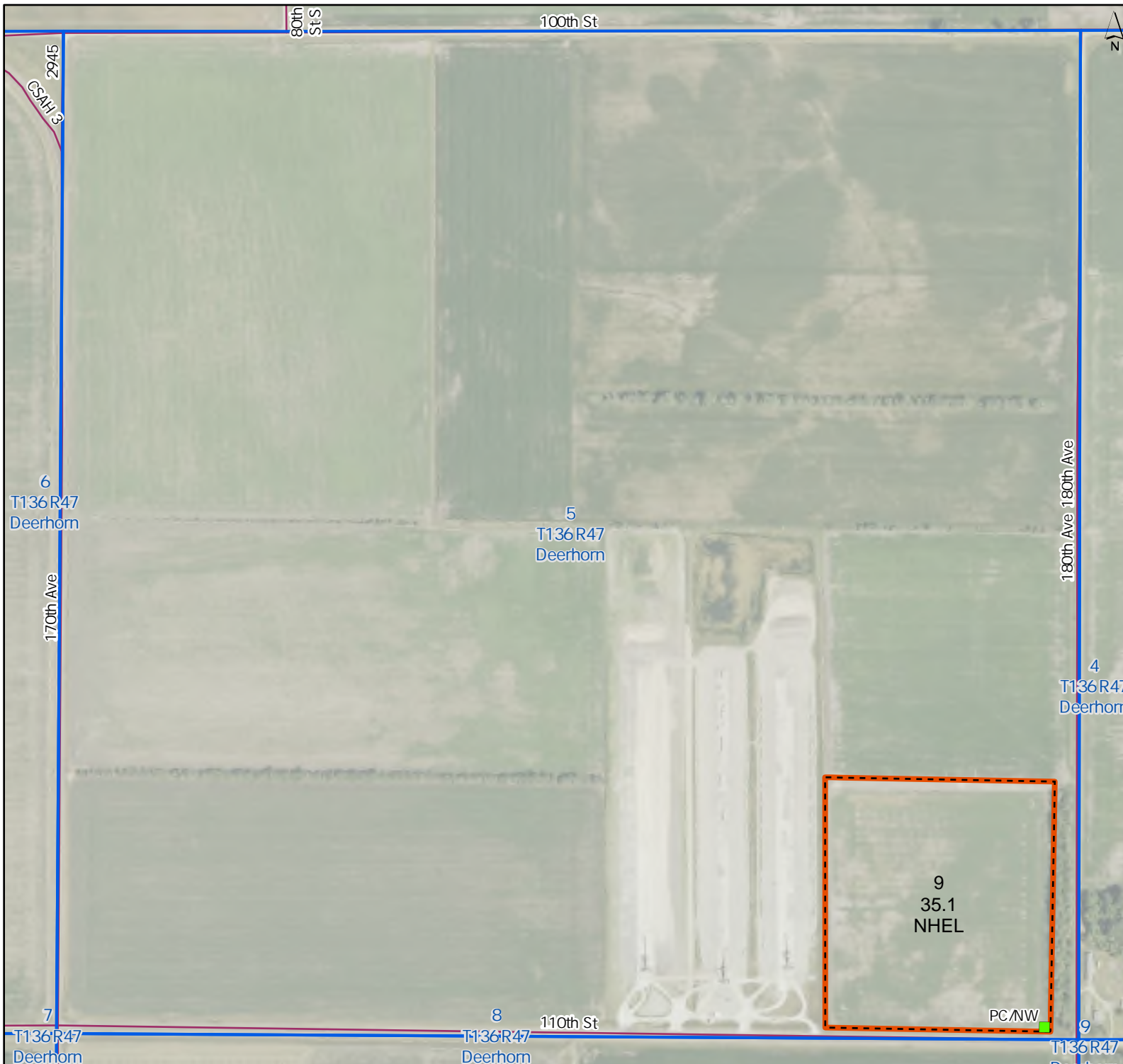
PARCEL 5

- Tract Boundary
- Cropland
- PLSS

Wetland Determination Identifiers

- Restricted Use
- Limited Restrictions
- Exempt from Conservation Compliance Provisions

Tract Cropland Total: 35.10 acres



United States Department of Agriculture (USDA) Farm Service Agency (FSA) maps are for FSA Program administration only. This map does not represent a legal survey or reflect actual ownership; rather it depicts the information provided directly from the producer and/or National Agricultural Imagery Program (NAIP) imagery. The producer accepts the data 'as is' and assumes all risks associated with its use. USDA-FSA assumes no responsibility for actual or consequential damage incurred as a result of any user's reliance on this data outside FSA Programs. Wetland identifiers do not represent the size, shape, or specific determination of the area. Refer to your original determination (CPA-026 and attached maps) for exact boundaries and determinations or contact USDA NRCS. USDA is an equal opportunity provider, employer, and lender.



**Wilkin County
Minnesota**

Farm 8854

Tract 8495

S7 T136 R47

Phy. County: Wilkin, MN

2026 Program Year

2023 NAIP Imagery
Map Created 04/15/2026



- Unless Otherwise Noted:
 All fields are non-irrigated
 Shares are 100% to operator
 Corn = Yellow for Grain
 Soybeans = Common for Grain
 Wheat = HRS, HRW = Grain
 Sunflowers = Oil, Non-Oil = Grain
 Oats & Barley = Spring for Grain
 Canola = Spring for Seed
 Alfalfa = For Forage
 Mix Forage AGM, GMA, IGS = for Forage
 Rye = for Grain
 Peas = Process
 Beans = Dry Edible
 Native Annual Grass = for Grazing

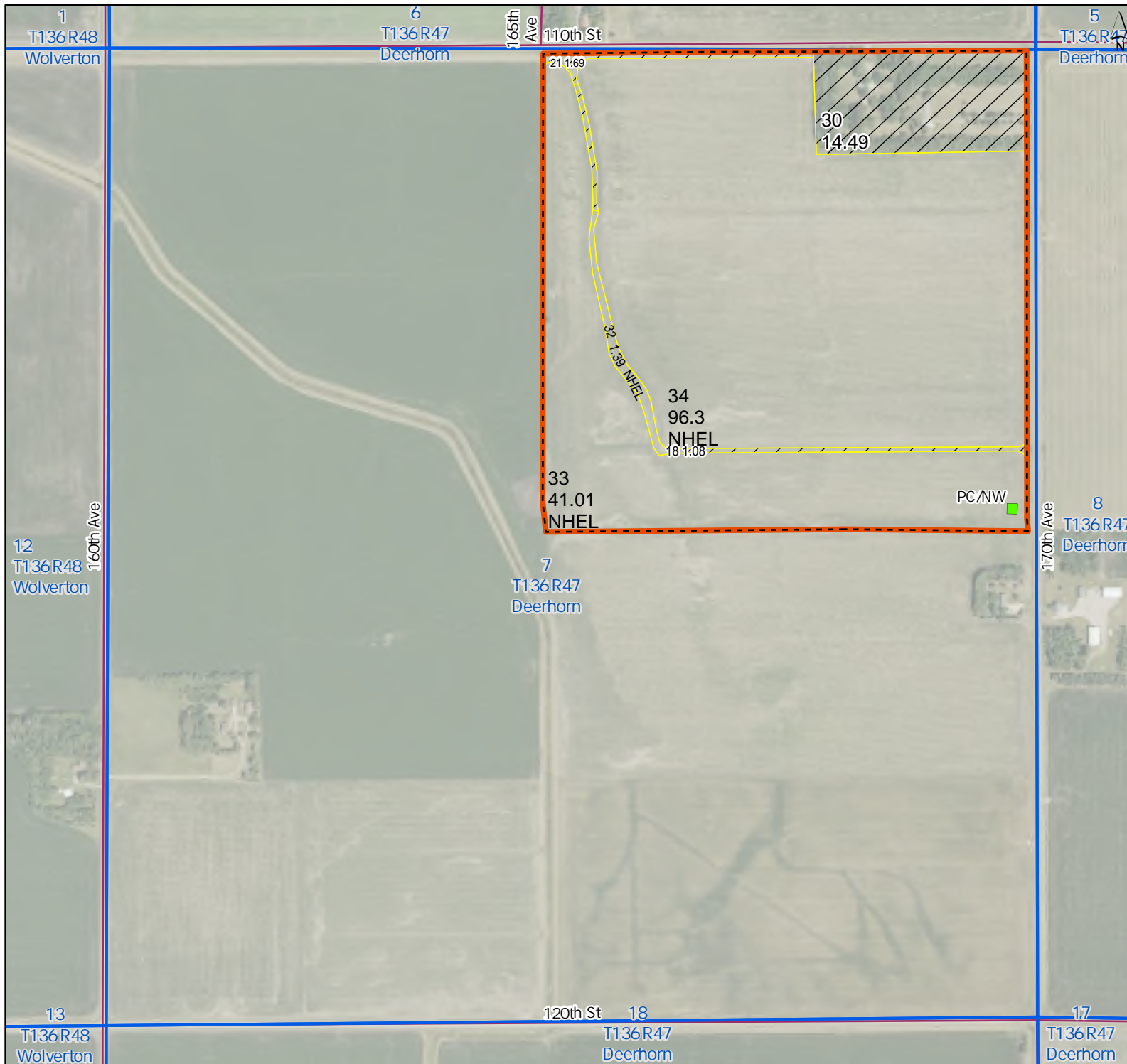
PARCEL 6

- Tract Boundary
- Noncropland
- Cropland
- PLSS

Wetland Determination Identifiers

- Restricted Use
- Limited Restrictions
- Exempt from Conservation Compliance Provisions

Tract Cropland Total: 138.70 acres



United States Department of Agriculture (USDA) Farm Service Agency (FSA) maps are for FSA Program administration only. This map does not represent a legal survey or reflect actual ownership; rather it depicts the information provided directly from the producer and/or National Agricultural Imagery Program (NAIP) imagery. The producer accepts the data 'as is' and assumes all risks associated with its use. USDA-FSA assumes no responsibility for actual or consequential damage incurred as a result of any user's reliance on this data outside FSA Programs. Wetland identifiers do not represent the size, shape, or specific determination of the area. Refer to your original determination (CPA-026 and attached maps) for exact boundaries and determinations or contact USDA NRCS. USDA is an equal opportunity provider, employer, and lender.





Abbreviated 156 Farm Record

Operator Name : ██████████
 CRP Contract Number(s) : None
 Recon ID : 27-167-2022-127
 Transferred From : None
 ARCPLC G//F Eligibility : Eligible

Farm Land Data

Farmland	Cropland	DCP Cropland	WBP	EWP	WRP	GRP	Sugarcane	Farm Status	Number Of Tracts
72.53	72.53	72.53	0.00	0.00	0.00	0.00	0.0	Active	2
State Conservation	Other Conservation	Effective DCP Cropland	Double Cropped		CRP	MPL	DCP Ag.Rel. Activity	SOD	
0.00	0.00	72.53	0.00		0.00	0.00	0.00	0.00	

Crop Election Choice

ARC Individual	ARC County	Price Loss Coverage
None	None	None
ARC Individual - Default	ARC County - Default	Price Loss Coverage - Default
None	CORN, SOYBN	None

DCP Crop Data

Crop Name	Base Acres	CCC-505 CRP Reduction Acres	PLC Yield	HIP
Corn	37.63	0.00	129	12
Soybeans	21.16	0.00	33	0
TOTAL	58.79	0.00		

NOTES

--

Tract Number : 8488

Description : NE4NE4-5-136-47, Deerhorn
 FSA Physical Location : MINNESOTA/WILKIN
 ANSI Physical Location : MINNESOTA/WILKIN
 BIA Unit Range Number :
 CRP Contract Number(s) : None
 HEL Status : NHEL: No agricultural commodity planted on undetermined fields
 Wetland Status : Tract does not contain a wetland
 WL Violations : None
 Owners :
 Other Producers :
 Recon ID : None
 : 27-167-2022-126

PARCEL 2



Abbreviated 156 Farm Record

Operator Name : XXXXXXXXXX
 CRP Contract Number(s) : None
 Recon ID : 27-167-2023-74
 Transferred From : None
 ARCPLC G//F Eligibility : Eligible

Farm Land Data

Farmland	Cropland	DCP Cropland	WBP	EWP	WRP	GRP	Sugarcane	Farm Status	Number Of Tracts
972.11	934.11	934.11	0.00	0.00	0.00	0.00	0.0	Active	10
State Conservation	Other Conservation	Effective DCP Cropland	Double Cropped		CRP	MPL	DCP Ag.Rel. Activity	SOD	
0.00	0.00	934.11	0.00		0.00	0.00	0.00	0.00	

Crop Election Choice

ARC Individual	ARC County	Price Loss Coverage
None	None	None
ARC Individual - Default	ARC County - Default	Price Loss Coverage - Default
None	WHEAT, CORN, SNFLR, SOYBN, BARLY	None

DCP Crop Data

Crop Name	Base Acres	CCC-505 CRP Reduction Acres	PLC Yield	HIP
Wheat	356.43	0.00	45	
Corn	74.03	0.00	139	0
Sunflowers	18.53	0.00	1960	
Soybeans	274.45	0.00	33	0
Barley	72.75	0.00	50	
TOTAL	796.19	0.00		

NOTES

Tract Number : 4544

Description : S2NE4 SEC 5/DEER
 FSA Physical Location : MINNESOTA/WILKIN
 ANSI Physical Location : MINNESOTA/WILKIN
 BIA Unit Range Number :
 CRP Contract Number(s) : None
 HEL Status : NHEL: No agricultural commodity planted on undetermined
 Wetland Status fields : Tract does not contain a wetland
 WL Violations : None
 Owners
 Other Producers : None
 Recon ID : None

PARCEL 3

Abbreviated 156 Farm Record

Tract 4546 Continued ...

████	████	████	██
██	██	██	██
██████	██	██	████
██████	██	██	██
██	██	██	██
████	████	██	

NOTES

Tract Number : 6816

Description : NE4SE4, S5-136-47, Deerhorn
FSA Physical Location : MINNESOTA/WILKIN
ANSI Physical Location : MINNESOTA/WILKIN
BIA Unit Range Number :
CRP Contract Number(s) : None
HEL Status : NHEL: No agricultural commodity planted on undetermined fields
Wetland Status : Tract does not contain a wetland
WL Violations : None
Owners
Other Producers : None
Recon ID : 27-167-2012-23

PARCEL 5

Tract Land Data

Farm Land	Cropland	DCP Cropland	WBP	EWP	WRP	GRP	Sugarcane
38.18	38.18	38.18	0.00	0.00	0.00	0.00	0.0
State Conservation	Other Conservation	Effective DCP Cropland	Double Cropped	CRP	MPL	DCP Ag. Rel Activity	SOD
0.00	0.00	38.18	0.00	0.00	0.00	0.00	0.00

DCP Crop Data

Crop Name	Base Acres	CCC-505 CRP Reduction Acres	PLC Yield
Wheat	14.30	0.00	45
Corn	3.00	0.00	139
Sunflowers	0.80	0.00	1960
Soybeans	11.00	0.00	33
Barley	2.90	0.00	50
TOTAL	32.00	0.00	

NOTES

Abbreviated 156 Farm Record

Tract Number : 8491

Description : NW4SW4, S2SW4-5-136-47, Deerhorn
FSA Physical Location : MINNESOTA/WILKIN
ANSI Physical Location : MINNESOTA/WILKIN
BIA Unit Range Number :
CRP Contract Number(s) : None
HEL Status : NHEL: No agricultural commodity planted on undetermined fields
Wetland Status : Tract does not contain a wetland
WL Violations : None
Owners :
Other Producers : None
Recon ID : 27-167-2022-128

PARCEL 4

Tract Land Data

Farm Land	Cropland	DCP Cropland	WBP	EWP	WRP	GRP	Sugarcane
115.61	115.61	115.61	0.00	0.00	0.00	0.00	0.0
State Conservation	Other Conservation	Effective DCP Cropland	Double Cropped	CRP	MPL	DCP Ag. Rel Activity	SOD
0.00	0.00	115.61	0.00	0.00	0.00	0.00	0.00

DCP Crop Data

Crop Name	Base Acres	CCC-505 CRP Reduction Acres	PLC Yield
Wheat	44.55	0.00	45
Corn	9.24	0.00	139
Sunflowers	2.32	0.00	1960
Soybeans	34.31	0.00	33
Barley	9.09	0.00	50
TOTAL	99.51	0.00	

NOTES

Tract Number : 8493

Description : [REDACTED]
FSA Physical Location : [REDACTED]
ANSI Physical Location : [REDACTED]
BIA Unit Range Number :
CRP Contract Number(s) : [REDACTED]
HEL Status : [REDACTED]
Wetland Status : [REDACTED]
WL Violations : [REDACTED]
Owners : [REDACTED]
Other Producers : [REDACTED]

Abbreviated 156 Farm Record

Tract 8493 Continued ...

Recon ID : ██████████

Tract Land Data

Farm Land	Cropland	DCP Cropland	WBP	EWP	WRP	GRP	Sugarcane
██████	██████	██████	████	████	████	████	████
State Conservation	Other Conservation	Effective DCP Cropland	Double Cropped	CRP	MPL	DCP Ag. Rel Activity	SOD
████	████	██████	████	████	████	████	████

DCP Crop Data

Crop Name	Base Acres	CCC-505 CRP Reduction Acres	PLC Yield
██████	██████	████	████
██████	██████	████	████
██████	████	████	████
██████	██████	████	████
██████	██████	████	████
██████	██████	████	████

NOTES

Tract Number : 8494

Description : SE4SE4-5-136-47, Deerhorn
FSA Physical Location : MINNESOTA/WILKIN
ANSI Physical Location : MINNESOTA/WILKIN
BIA Unit Range Number :
CRP Contract Number(s) : None
HEL Status : NHEL: No agricultural commodity planted on undetermined fields
Wetland Status : Tract does not contain a wetland
WL Violations : None
Owners : PEET GOOD EARTH FARM LLC
Other Producers : None
Recon ID : 27-167-2022-129

PARCEL 5

Tract Land Data

Farm Land	Cropland	DCP Cropland	WBP	EWP	WRP	GRP	Sugarcane
35.10	35.10	35.10	0.00	0.00	0.00	0.00	0.0
State Conservation	Other Conservation	Effective DCP Cropland	Double Cropped	CRP	MPL	DCP Ag. Rel Activity	SOD
0.00	0.00	35.10	0.00	0.00	0.00	0.00	0.00

Abbreviated 156 Farm Record

DCP Crop Data

Tract 8494 Continued ...

Crop Name	Base Acres	CCC-505 CRP Reduction Acres	PLC Yield
Wheat	13.07	0.00	45
Corn	2.71	0.00	139
Sunflowers	0.68	0.00	1960
Soybeans	10.07	0.00	33
Barley	2.67	0.00	50
TOTAL	29.20	0.00	PARCEL 5

NOTES

--

Tract Number : 8495

Description : NE1/4-7-136-47, Deerhorn
FSA Physical Location : MINNESOTA/WILKIN
ANSI Physical Location : MINNESOTA/WILKIN
BIA Unit Range Number :
CRP Contract Number(s) : None
HEL Status : NHEL: No agricultural commodity planted on undetermined fields
Wetland Status : Tract does not contain a wetland
WL Violations : None
Owners : PEET GOOD EARTH FARM LLC
Other Producers : None
Recon ID : 27-167-2022-129

PARCEL 6

Tract Land Data

Farm Land	Cropland	DCP Cropland	WBP	EWP	WRP	GRP	Sugarcane
155.96	138.70	138.70	0.00	0.00	0.00	0.00	0.0
State Conservation	Other Conservation	Effective DCP Cropland	Double Cropped	CRP	MPL	DCP Ag. Rel Activity	SOD
0.00	0.00	138.70	0.00	0.00	0.00	0.00	0.00

DCP Crop Data

Crop Name	Base Acres	CCC-505 CRP Reduction Acres	PLC Yield
Wheat	52.48	0.00	45
Corn	10.89	0.00	139
Sunflowers	2.73	0.00	1960
Soybeans	40.42	0.00	33
Barley	10.71	0.00	50
TOTAL	117.23	0.00	

Abbreviated 156 Farm Record

Tract 8495 Continued ...

NOTES

Tract Number : 8496

Description : 2.12 ac. in S2S2-5-136-47, Deerhorn
FSA Physical Location : MINNESOTA/WILKIN
ANSI Physical Location : MINNESOTA/WILKIN
BIA Unit Range Number :
CRP Contract Number(s) : None
HEL Status : NHEL: No agricultural commodity planted on undetermined fields
Wetland Status : Tract does not contain a wetland
WL Violations : None
Owners : PEET GOOD EARTH FARM LLC
Other Producers : None
Recon ID : 27-167-2022-130

PARCEL 4

Tract Land Data

Farm Land	Cropland	DCP Cropland	WBP	EWP	WRP	GRP	Sugarcane
2.12	1.61	1.61	0.00	0.00	0.00	0.00	0.0
State Conservation	Other Conservation	Effective DCP Cropland	Double Cropped	CRP	MPL	DCP Ag. Rel Activity	SOD
0.00	0.00	1.61	0.00	0.00	0.00	0.00	0.00

DCP Crop Data

Crop Name	Base Acres	CCC-505 CRP Reduction Acres	PLC Yield

NOTES

Tract Number : 8498

Description : NW4 & NE4SW4, 5-136-47, Deerhorn
FSA Physical Location : MINNESOTA/WILKIN
ANSI Physical Location : MINNESOTA/WILKIN
BIA Unit Range Number :
CRP Contract Number(s) : None
HEL Status : NHEL: No agricultural commodity planted on undetermined fields
Wetland Status : Tract does not contain a wetland
WL Violations : None
Owners : PEET FARM PROPERTIES LLC
Other Producers : None
Recon ID : 27-167-2022-131

PARCELS 1 & 4

Abbreviated 156 Farm Record

Tract Land Data

Tract 8498 Continued ...

Farm Land	Cropland	DCP Cropland	WBP	EWP	WRP	GRP	Sugarcane
188.52	187.45	187.45	0.00	0.00	0.00	0.00	0.0
State Conservation	Other Conservation	Effective DCP Cropland	Double Cropped	CRP	MPL	DCP Ag. Rel Activity	SOD
0.00	0.00	187.45	0.00	0.00	0.00	0.00	0.00

DCP Crop Data

Crop Name	Base Acres	CCC-505 CRP Reduction Acres	PLC Yield
Wheat	72.39	0.00	45
Corn	15.00	0.00	139
Sunflowers	3.73	0.00	1960
Soybeans	55.71	0.00	33
Barley	14.81	0.00	50
TOTAL	161.64	0.00	PARCELS 1 & 4

NOTES

Tract Number : 8500

Description : 5.17 ac. in W2NW4SE4-5-136-47, Deerhorn
FSA Physical Location : MINNESOTA/WILKIN
ANSI Physical Location : MINNESOTA/WILKIN
BIA Unit Range Number :
CRP Contract Number(s) : None
HEL Status : NHEL: No agricultural commodity planted on undetermined fields
Wetland Status : Tract does not contain a wetland
WL Violations : None
Owners : PEET GOOD EARTH FARM LLC
Other Producers : None
Recon ID : 27-167-2022-131

PARCEL 4

Tract Land Data

Farm Land	Cropland	DCP Cropland	WBP	EWP	WRP	GRP	Sugarcane
5.17	5.17	5.17	0.00	0.00	0.00	0.00	0.0
State Conservation	Other Conservation	Effective DCP Cropland	Double Cropped	CRP	MPL	DCP Ag. Rel Activity	SOD
0.00	0.00	5.17	0.00	0.00	0.00	0.00	0.00

DCP Crop Data

Crop Name	Base Acres	CCC-505 CRP Reduction Acres	PLC Yield
-----------	------------	-----------------------------	-----------



Abbreviated 156 Farm Record

Tract 8500 Continued ...

Wheat	2.00	0.00	45
Corn	0.41	0.00	139
Sunflowers	0.10	0.00	1960
Soybeans	1.54	0.00	33
Barley	0.41	0.00	50

TOTAL 4.46 0.00 **PARCEL 4**

NOTES

In accordance with Federal civil rights law and U.S. Department of Agriculture (USDA) civil rights regulations and policies, the USDA, its Agencies, offices, and employees, and institutions participating in or administering USDA programs are prohibited from discriminating based on race, color, national origin, religion, sex, disability, age, marital status, family/parental status, income derived from a public assistance program, political beliefs, or reprisal or retaliation for prior civil rights activity, in any program or activity conducted or funded by USDA (not all bases apply to all programs). Remedies and complaint filing deadlines vary by program or incident.

Persons with disabilities who require alternative means of communication for program information (e.g., Braille, large print, audiotape, American Sign Language, etc.) should contact the State or Local Agency that administers the program or contact USDA through the Telecommunications Relay Service at 711 (voice and TTY). Additionally, program information may be made available in languages other than English.

To file a program discrimination complaint, complete the USDA Program Discrimination Complaint Form, AD-3027, found online at [How to File a Program Discrimination Complaint](#) and at any USDA office or write a letter addressed to USDA and provide in the letter all of the information requested in the form. To request a copy of the complaint form, call (866) 632-9992. Submit your completed form or letter to USDA by: (1) Mail: U.S. Department of Agriculture Office of the Assistant Secretary for Civil Rights, 1400 Independence Avenue, SW Washington, D.C. 20250-9410; (2) Fax: (202) 690-7442; or (3) Email: program.intake@usda.gov. USDA is an equal opportunity provider, employer, and lender.