

Wells County North Dakota

Farm 5350

S19 T149N R72W

Phy. County: Wells

2026 Program Year

2025 imagery

Map Created 03/30/2026



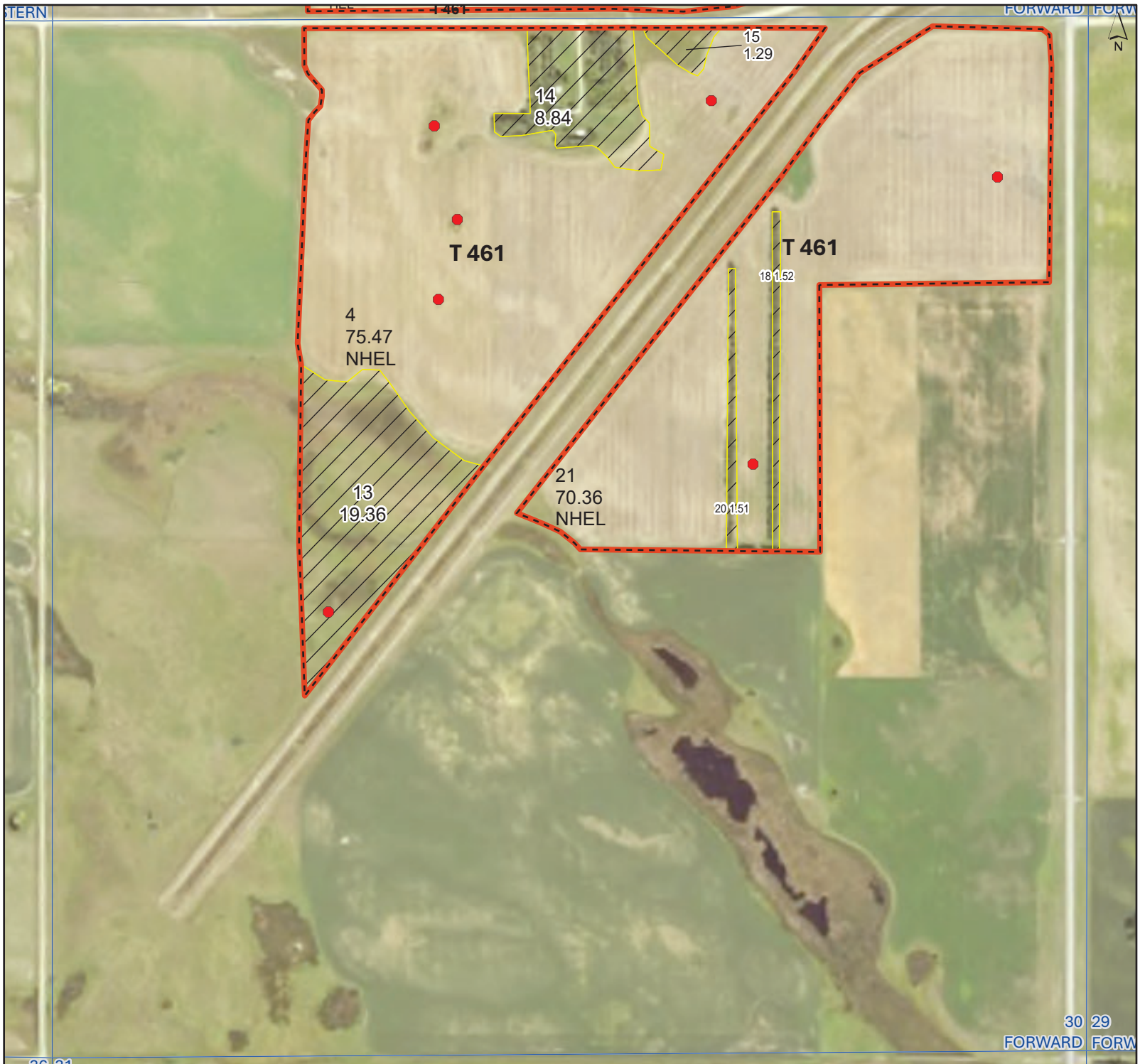
- Unless Otherwise Noted:**
- Barley = Spring for Grain
 - Canola = Spring for Processing
 - Corn = Yellow for Grain
 - Flax = Common for Grain
 - Oats = Spring for Grain
 - Soybeans = Common for Grain
 - Sunflowers = Oil for Grain
 - Wheat = Spring for Grain
 - All fields are non-irrigated
 - Shares are 100% to operator

- Tract Boundary
- Noncropland
- Cropland
- PLSS

- Wetland Determination Identifiers**
- Restricted Use
 - ▼ Limited Restrictions
 - Exempt from Conservation
 - Compliance Provisions

United States Department of Agriculture (USDA) Farm Service Agency (FSA) maps are for FSA Program administration only. This map does not represent a legal survey or reflect actual ownership; rather it depicts the information provided directly from the producer and/or National Agricultural Imagery Program (NAIP) imagery. The producer accepts the data 'as is' and assumes all risks associated with its use. USDA-FSA assumes no responsibility for actual or consequential damage incurred as a result of any user's reliance on this data outside FSA Programs. Wetland identifiers do not represent the size, shape, or specific determination of the area. Refer to your original determination (CPA-026 and attached maps) for exact boundaries and determinations or contact USDA NRCS. USDA is an equal opportunity provider, employer, and lender.





**Wells County
North Dakota**

Farm 5350

S30 T149N R72W

Phy. County: Wells

2026 Program Year

2025 imagery

Map Created 03/30/2026



- Unless Otherwise Noted:**
- Barley = Spring for Grain
 - Canola = Spring for Processing
 - Corn = Yellow for Grain
 - Flax = Common for Grain
 - Oats = Spring for Grain
 - Soybeans = Common for Grain
 - Sunflowers = Oil for Grain
 - Wheat = Spring for Grain
 - All fields are non-irrigated
 - Shares are 100% to operator

- Tract Boundary
- Noncropland
- Cropland
- PLSS

- Wetland Determination Identifiers**
- Restricted Use
 - Limited Restrictions
 - Exempt from Conservation Compliance Provisions

United States Department of Agriculture (USDA) Farm Service Agency (FSA) maps are for FSA Program administration only. This map does not represent a legal survey or reflect actual ownership; rather it depicts the information provided directly from the producer and/or National Agricultural Imagery Program (NAIP) imagery. The producer accepts the data 'as is' and assumes all risks associated with its use. USDA-FSA assumes no responsibility for actual or consequential damage incurred as a result of any user's reliance on this data outside FSA Programs. Wetland identifiers do not represent the size, shape, or specific determination of the area. Refer to your original determination (CPA-026 and attached maps) for exact boundaries and determinations or contact USDA NRCS. USDA is an equal opportunity provider, employer, and lender.





Abbreviated 156 Farm Record

NOTES

Tract Number : 461

Description : E2;SESW 19;E2NW;W2NE;NENE 30-149-72

FSA Physical Location : NORTH DAKOTA/WELLS

ANSI Physical Location : NORTH DAKOTA/WELLS

BIA Unit Range Number :

CRP Contract Number(s) : None

HEL Status : HEL field on tract.Conservation system being actively applied

Wetland Status : Tract contains a wetland or farmed wetland

WL Violations : None

Owners :

Other Producers : [REDACTED]

Recon ID : None

Tract Land Data

Farm Land	Cropland	DCP Cropland	WBP	EWP	WRP	GRP	Sugarcane
500.59	357.14	357.14	0.00	0.00	0.00	0.00	0.0

Abbreviated 156 Farm Record

Tract 461 Continued ...

State Conservation	Other Conservation	Effective DCP Cropland	Double Cropped	CRP	MPL	DCP Ag. Rel Activity	SOD
0.00	0.00	357.14	0.00	0.00	0.00	0.00	0.00

DCP Crop Data

Crop Name	Base Acres	CCC-505 CRP Reduction Acres	PLC Yield
Wheat	247.80	0.00	25
Barley	96.10	0.00	43
TOTAL	343.90	0.00	

NOTES

NOTES