

Bottineau County, ND

Farm 10568

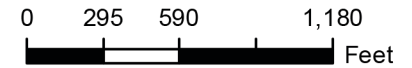
S21 T162N R81W

Phy Cnty: Bottineau

2025 Program Year

2023 Imagery

Map Created April 28, 2025

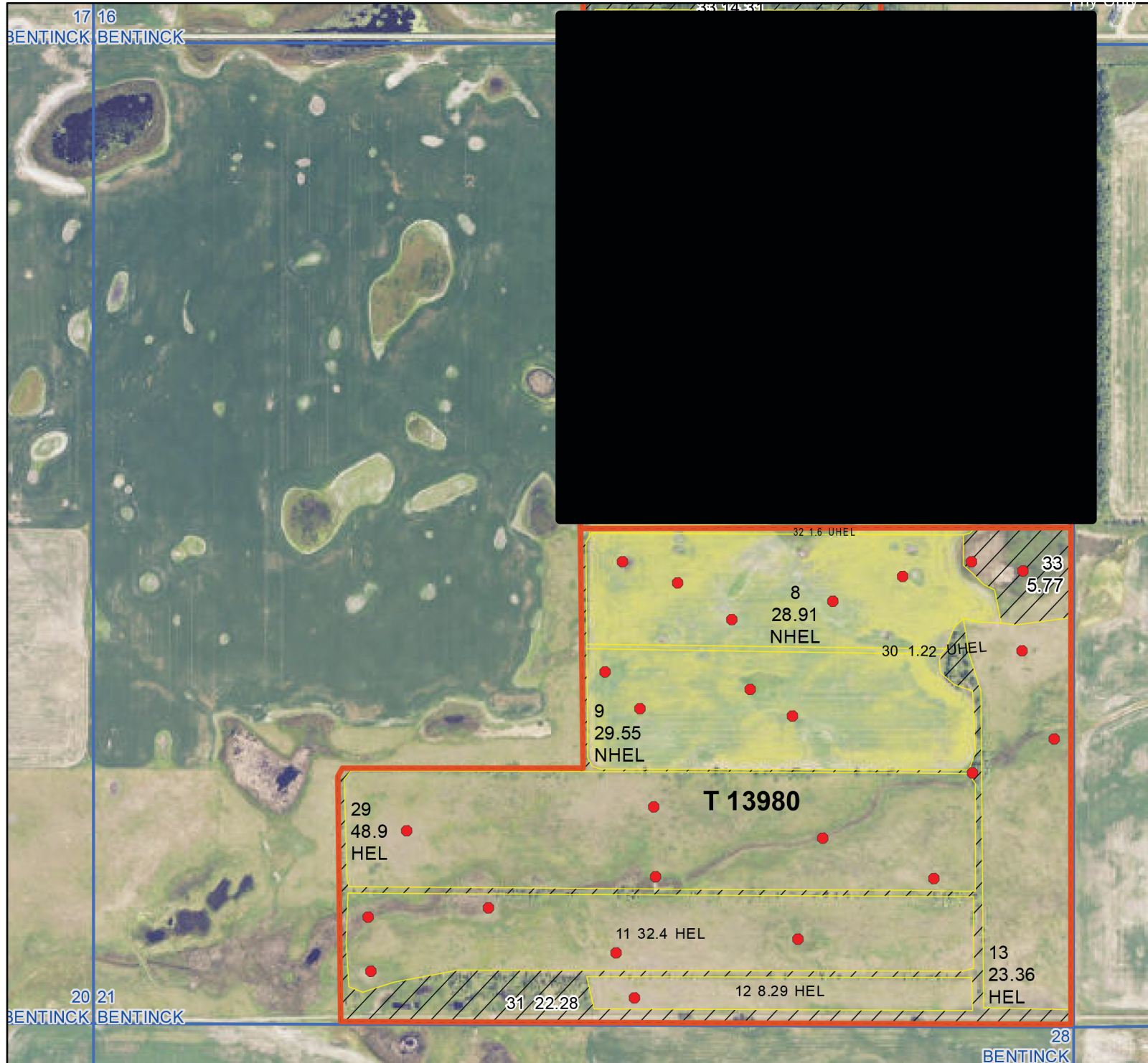


Unless Otherwise Noted:
Barley = Spring for Grain
Canola = Spring for Processing
Corn = Yellow for Grain
Flax = Common for Grain
Oats = Spring for Grain
Soybeans = Common for Grain
Sunflowers = Oil for Grain
Wheat = Spring for Grain
All fields are non-irrigated
Shares are 100% to operator

- Tract Boundary
- Non-Cropland
- Cropland
- PLSS

Wetland Determination Identifiers

- Restricted Use
- Limited Restrictions
- Exempt from Conservation Compliance Provisions



Bottineau County, ND

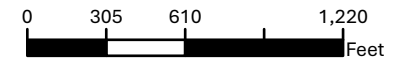
Farm 1075

S5 T161N R81W

Phy. Cnty: Bottineau

2025 Program Year

2023 imagery
Map Created 04/21/2025



Unless Otherwise Noted:

- Barley = Spring for Grain
- Canola = Spring for Processing
- Corn = Yellow for Grain
- Flax = Common for Grain
- Oats = Spring for Grain
- Soybeans = Common for Grain
- Sunflowers = Oil for Grain
- Wheat = Spring for Grain
- All fields are non-irrigated
- Shares are 100% to operator



Tract Boundary

Noncropland

Cropland

PLSS

Wetland Determination Identifiers

- Restricted Use
- Limited Restrictions
- Exempt from Conservation Compliance Provisions

United States Department of Agriculture (USDA) Farm Service Agency (FSA) maps are for FSA Program administration only. This map does not represent a legal survey or reflect actual ownership; rather it depicts the information provided directly from the producer and/or National Agricultural Imagery Program (NAIP) imagery. The producer accepts the data 'as is' and assumes all risks associated with its use. USDA-FSA assumes no responsibility for actual or consequential damage incurred as a result of any user's reliance on this data outside FSA Programs. Wetland identifiers do not represent the size, shape, or specific determination of the area. Refer to your original determination (CPA-026 and attached maps) for exact boundaries and determinations or contact USDA NRCS. USDA is an equal opportunity provider, employer, and lender.



Abbreviated 156 Farm Record

Tract Land Data

Tract Number : 13980
Description : SESW, SE 21 162 81
FSA Physical Location : NORTH DAKOTA/BOTTINEAU
ANSI Physical Location : NORTH DAKOTA/BOTTINEAU
BIA Unit Range Number :
CRP Contract Number(s) : None
HEL Status : HEL field on tract.Conservation system being actively applied
Wetland Status : Tract contains a wetland or farmed wetland
WL Violations : None
Owners
Other Producers
Recon ID : 38-009-2025-29

Tract Land Data

Farm Land	Cropland	DCP Cropland	WBP	EWP	WRP	GRP	Sugarcane
202.29	185.84	185.84	0.00	0.00	0.00	0.00	0.0
State Conservation	Other Conservation	Effective DCP Cropland	Double Cropped	CRP	MPL	DCP Ag. Rel Activity	SOD
0.00	0.00	185.84	0.00	0.00	0.00	0.00	0.00

DCP Crop Data

Crop Name	Base Acres	CCC-505 CRP Reduction Acres	PLC Yield

Farm Land Data

Farmland	Cropland	DCP Cropland	WBP	EWP	WRP	GRP	Sugarcane	Farm Status	Number Of Tracts
41.76	0.00	0.00	0.00	0.00	0.00	0.00	0.0	Active	1
State Conservation	Other Conservation	Effective DCP Cropland	Double Cropped	CRP	MPL	DCP Ag.Rel. Activity	SOD		
0.00	0.00	0.00	0.00	0.00	0.00	0.00	0.00		

Crop Election Choice

ARC Individual	ARC County	Price Loss Coverage
None	WHEAT, SNFLR, SOYBN, BARLY, CANOL	None

DCP Crop Data

Crop Name	Base Acres	CCC-505 CRP Reduc Acres	PLC Yield	HIP

NOTES

--



Abbreviated 156 Farm Record

Operator Name

CRP Contract Number(s) : None
Recon ID : None
Transferred From : None
ARCPLC G//F Eligibility : Eligible

Farm Land Data

Farmland	Cropland	DCP Cropland	WBP	EWP	WRP	GRP	Sugarcane	Farm Status	Number Of Tracts
310.76	285.87	285.87	0.00	0.00	0.00	0.00	0.0	Active	1
State Conservation	Other Conservation	Effective DCP Cropland	Double Cropped		CRP	MPL	DCP Ag.Rel. Activity	SOD	
0.00	0.00	285.87	0.00		0.00	0.00	0.00	0.00	

Crop Election Choice

ARC Individual	ARC County	Price Loss Coverage
None	WHEAT, BARLY, CANOL	None

DCP Crop Data

Crop Name	Base Acres	CCC-505 CRP Reduction Acres	PLC Yield	HIP
Wheat	71.73	0.00	40	
Barley	141.61	0.00	62	
Canola	71.76	0.00	988	
TOTAL	285.10	0.00		

NOTES

--

Tract Number : 2172

Description : W2 5 161 81
FSA Physical Location : NORTH DAKOTA/BOTTINEAU
ANSI Physical Location : NORTH DAKOTA/BOTTINEAU
BIA Unit Range Number :
CRP Contract Number(s) : None
HEL Status : HEL field on tract.Conservation system being actively applied
Wetland Status : Tract contains a wetland or farmed wetland
WL Violations : None
Owners
Other Producers
Recon ID : None

Tract Land Data

Farm Land	Cropland	DCP Cropland	WBP	EWP	WRP	GRP	Sugarcane
310.76	285.87	285.87	0.00	0.00	0.00	0.00	0.0

Abbreviated 156 Farm Record

Tract 2172 Continued ...

State Conservation	Other Conservation	Effective DCP Cropland	Double Cropped	CRP	MPL	DCP Ag. Rel Activity	SOD
0.00	0.00	285.87	0.00	0.00	0.00	0.00	0.00

DCP Crop Data

Crop Name	Base Acres	CCC-505 CRP Reduction Acres	PLC Yield
Wheat	71.73	0.00	40
Barley	141.61	0.00	62
Canola	71.76	0.00	988
TOTAL	285.10	0.00	

NOTES

--

In accordance with Federal civil rights law and U.S. Department of Agriculture (USDA) civil rights regulations and policies, the USDA, its Agencies, offices, and employees, and institutions participating in or administering USDA programs are prohibited from discriminating based on race, color, national origin, religion, sex, disability, age, marital status, family/parental status, income derived from a public assistance program, political beliefs, or reprisal or retaliation for prior civil rights activity, in any program or activity conducted or funded by USDA (not all bases apply to all programs). Remedies and complaint filing deadlines vary by program or incident.

Persons with disabilities who require alternative means of communication for program information (e.g., Braille, large print, audiotape, American Sign Language, etc.) should contact the State or Local Agency that administers the program or contact USDA through the Telecommunications Relay Service at 711 (voice and TTY). Additionally, program information may be made available in languages other than English.

To file a program discrimination complaint, complete the USDA Program Discrimination Complaint Form, AD-3027, found online at [How to File a Program Discrimination Complaint](#) and at any USDA office or write a letter addressed to USDA and provide in the letter all of the information requested in the form. To request a copy of the complaint form, call (866) 632-9992. Submit your completed form or letter to USDA by: (1) Mail: U.S. Department of Agriculture Office of the Assistant Secretary for Civil Rights, 1400 Independence Avenue, SW Washington, D.C. 20250-9410; (2) Fax: (202) 690-7442; or (3) Email: program.intake@usda.gov. USDA is an equal opportunity provider, employer, and lender.