

Pifer's



2 BEDS | 1 BATH | \$89,900

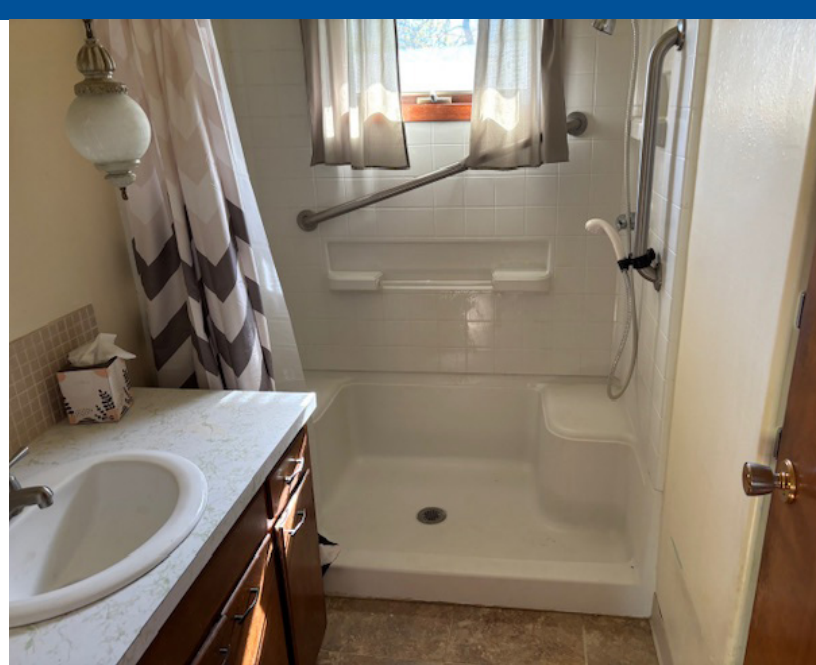
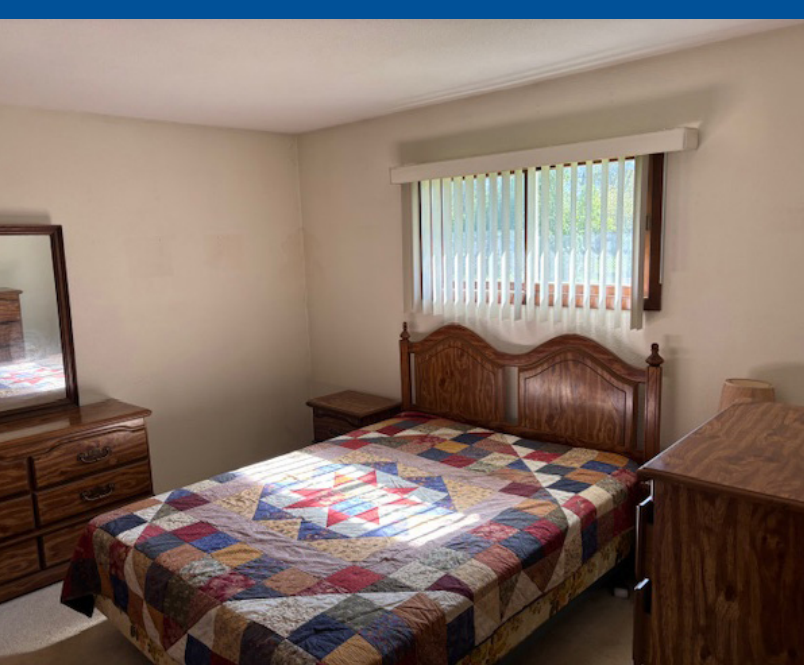
204 WELCOME AVE. E

TOLNA, ND

Pifer's Auction & Realty
1506 29th Ave S. • Moorhead, MN 56560
877.700.4099 • info@pifers.com



Jim Aaker
701.740.7962
jaaker@pifers.com



LISTED PRICE \$89,900

204 WELCOME AVE. E

TOLNA, ND



2 BEDS



1 BATH



1 STALL GARAGE



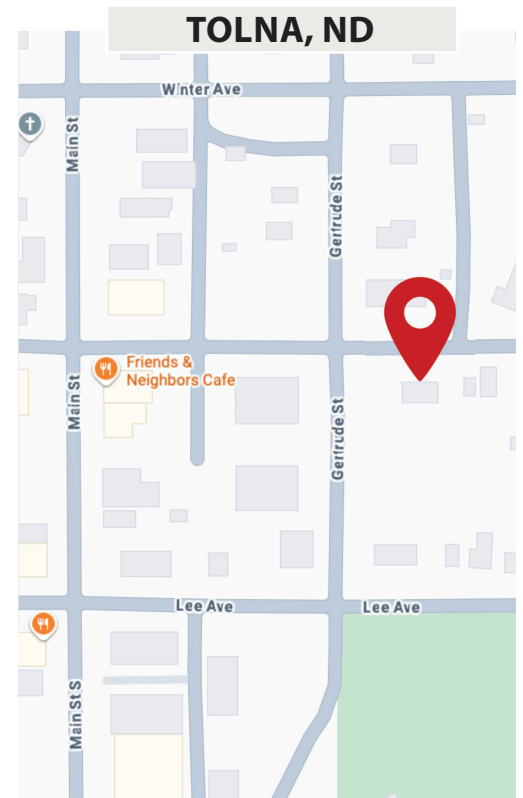
832 SQ. FT.

PROPERTY INFORMATION

This well-maintained rambler home, in Tolna, North Dakota, offers comfortable single-level living with 832 square feet of space. The home measures 26' x 32' and includes a 14' x 24' single-stall attached garage. Inside, you'll find a cozy living room, a combined kitchen and dining area, two bedrooms, and a full bathroom. The home has electric baseboard heat and no basement, making for simple and efficient maintenance. Situated on a large lot with room to expand, this property is in excellent repair and ready for its next owner to move right in.

KEY FEATURES

- Lot Size: 18,000 sq. ft.
- Bath: 1
- Beds: 2
- Sq Ft.: 832
- Heating & Air: Electric Baseboard Heat
- Basement: None
- Taxes: 512.38
- Legal: The West 120' of Lots 13-14-15 – of Block 12 OT



JIM AAKER

REAL ESTATE AGENT
701.740.7962
jaaker@pifers.com



Pifer's Auction & Realty
1506 29th Ave S. • Moorhead, MN 56560
877.700.4099 • info@pifers.com

