



United States  
Department of  
Agriculture

## Clay County, Minnesota

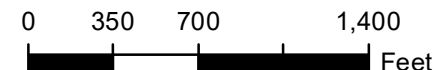
**Farm 11754**

**Tract 11589**

2025 Program Year

Map Created May 05, 2025

**1424731**



Unless otherwise noted:  
Shares are 100% operator  
Crops are non-irrigated  
Corn = yellow for grain  
Soybeans = common soybeans for grain  
Wheat = HRS, HRW = Grain  
Sunflower = Oil, Non-Oil = Grain  
Oats and Barley = Spring for grain  
Rye = for grain  
Peas = process  
Alfalfa, Mixed Forage AGM, GMA, IGS = for forage  
Beans = Dry Edible  
NAG = for GZ  
Canola = Spring for seed

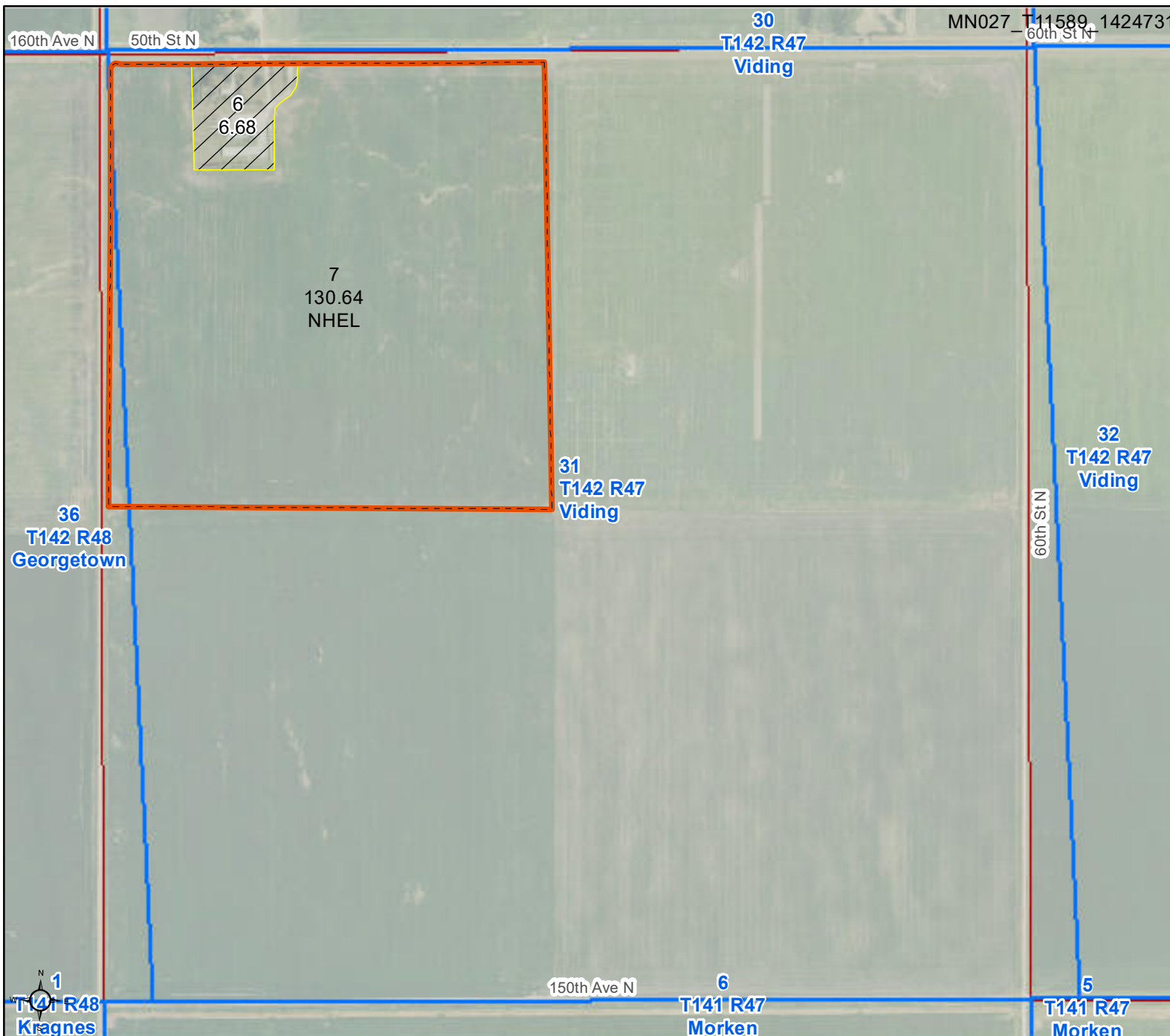
### Common Land Unit

- Non-Cropland
- Cropland
- Tract Boundary

### Wetland Determination Identifiers

- Restricted Use
- Limited Restrictions
- Exempt from Conservation Compliance Provisions

Tract Cropland Total: 130.64 acres



MINNESOTA  
CLAY



United States Department of Agriculture  
Farm Service Agency

FARM : 11754

Prepared : 1/22/26 9:53 AM CST

Form: FSA-156EZ

Crop Year : 2026

See Page 2 for non-discriminatory Statements.

Abbreviated 156 Farm Record

Operator Name : XXXXXXXXXX  
CRP Contract Number(s) : None  
Recon ID : 27-027-2023-106  
Transferred From : None  
ARCPLC G//F Eligibility : Eligible

Farm Land Data									
Farmland	Cropland	DCP Cropland	WBP	EWP	WRP	GRP	Sugarcane	Farm Status	Number Of Tracts
137.32	130.64	130.64	0.00	0.00	0.00	0.00	0.0	Active	1
State Conservation	Other Conservation	Effective DCP Cropland		Double Cropped		CRP	MPL	DCP Ag.Rel. Activity	SOD
0.00	0.00	130.64		0.00		0.00	0.00	0.00	0.00

Crop Election Choice		
ARC Individual	ARC County	Price Loss Coverage
None	WHEAT, SOYBN	None

DCP Crop Data				
Crop Name	Base Acres	CCC-505 CRP Reduction Acres	PLC Yield	HIP
Wheat	41.15	0.00	51	
Soybeans	33.13	0.00	33	0
TOTAL	74.28	0.00		

NOTES

Tract Number : 11589

Description : NW 31 VIDING

FSA Physical Location : MINNESOTA/CLAY

ANSI Physical Location : MINNESOTA/CLAY

BIA Unit Range Number :

CRP Contract Number(s) : None

HEL Status : NHEL: No agricultural commodity planted on undetermined fields

Wetland Status : Tract does not contain a wetland

WL Violations : None

Owners :

Other Producers : None

Recon ID : None

Tract Land Data							
Farm Land	Cropland	DCP Cropland	WBP	EWP	WRP	GRP	Sugarcane
137.32	130.64	130.64	0.00	0.00	0.00	0.00	0.0

MINNESOTA  
CLAY  
Form: FSA-156EZ



United States Department of Agriculture  
Farm Service Agency

FARM : 11754

Prepared : 1/22/26 9:53 AM CST

Crop Year : 2026

Abbreviated 156 Farm Record

Tract 11589 Continued ...

State Conservation	Other Conservation	Effective DCP Cropland	Double Cropped	CRP	MPL	DCP Ag. Rel Activity	SOD
0.00	0.00	130.64	0.00	0.00	0.00	0.00	0.00

DCP Crop Data

Crop Name	Base Acres	CCC-505 CRP Reduction Acres	PLC Yield
Wheat	41.15	0.00	51
Soybeans	33.13	0.00	33
<b>TOTAL</b>	<b>74.28</b>	<b>0.00</b>	

NOTES

--

In accordance with Federal civil rights law and U.S. Department of Agriculture (USDA) civil rights regulations and policies, the USDA, its Agencies, offices, and employees, and institutions participating in or administering USDA programs are prohibited from discriminating based on race, color, national origin, religion, sex, disability, age, marital status, family/parental status, income derived from a public assistance program, political beliefs, or reprisal or retaliation for prior civil rights activity, in any program or activity conducted or funded by USDA (not all bases apply to all programs). Remedies and complaint filing deadlines vary by program or incident.

Persons with disabilities who require alternative means of communication for program information (e.g., Braille, large print, audiotape, American Sign Language, etc.) should contact the State or Local Agency that administers the program or contact USDA through the Telecommunications Relay Service at 711 (voice and TTY). Additionally, program information may be made available in languages other than English.

To file a program discrimination complaint, complete the USDA Program Discrimination Complaint Form, AD-3027, found online at [How to File a Program Discrimination Complaint](#) and at any USDA office or write a letter addressed to USDA and provide in the letter all of the information requested in the form. To request a copy of the complaint form, call (866) 632-9992. Submit your completed form or letter to USDA by: (1) Mail: U.S. Department of Agriculture Office of the Assistant Secretary for Civil Rights, 1400 Independence Avenue, SW Washington, D.C. 20250-9410; (2) Fax: (202) 690-7442; or (3) Email: [program.intake@usda.gov](mailto:program.intake@usda.gov). USDA is an equal opportunity provider, employer, and lender.