

Common Land Unit Tract Boundary

- Cropland
- Rangeland

Wetland Determination Identifiers

- Restricted Use
- Limited Restrictions
- Exempt from Conservation Compliance Provisions

Tract Cropland Total: 157.51 acres

2026 Program Year

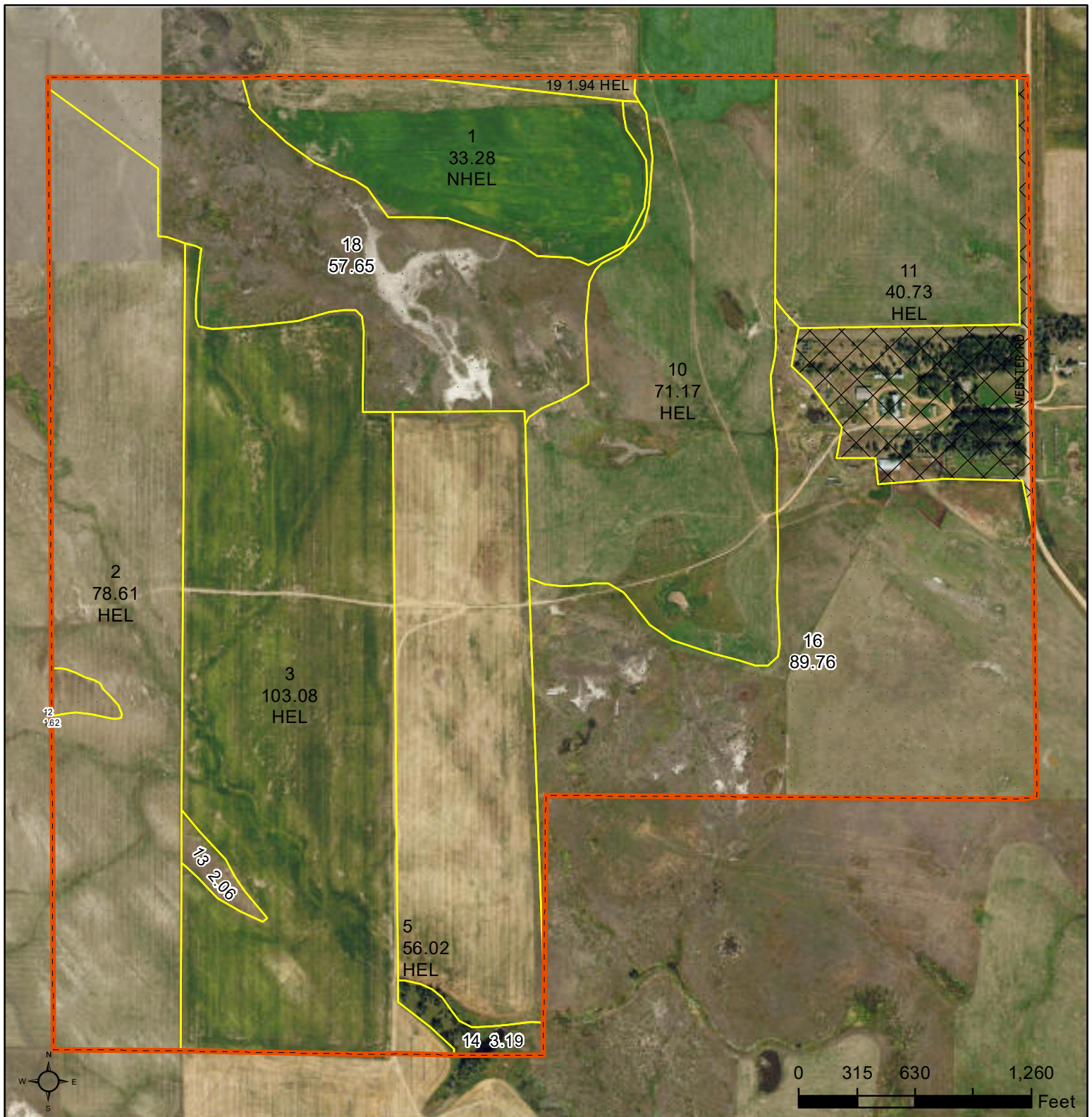
Map Created August 20, 2025
2021/2023 NAIP

Farm 1760

Tract 2472

23-3N-61E

United States Department of Agriculture (USDA) Farm Service Agency (FSA) maps are for FSA Program administration only. This map does not represent a legal survey or reflect actual ownership; rather it depicts the information provided directly from the producer and/or National Agricultural Imagery Program (NAIP) imagery. The producer accepts the data 'as is' and assumes all risks associated with its use. USDA-FSA assumes no responsibility for actual or consequential damage incurred as a result of any user's reliance on this data outside FSA Programs. Wetland identifiers do not represent the size, shape, or specific determination of the area. Refer to your original determination (CPA-026 and attached maps) for exact boundaries and determinations or contact USDA Natural Resources Conservation Service (NRCS).



Common Land Unit

- Cropland
- Rangeland
- Other Use
- Tract Boundary

Wetland Determination Identifiers

- Restricted Use
- Limited Restrictions
- Exempt from Conservation Compliance Provisions

Tract Cropland Total: 384.83 acres

2026 Program Year

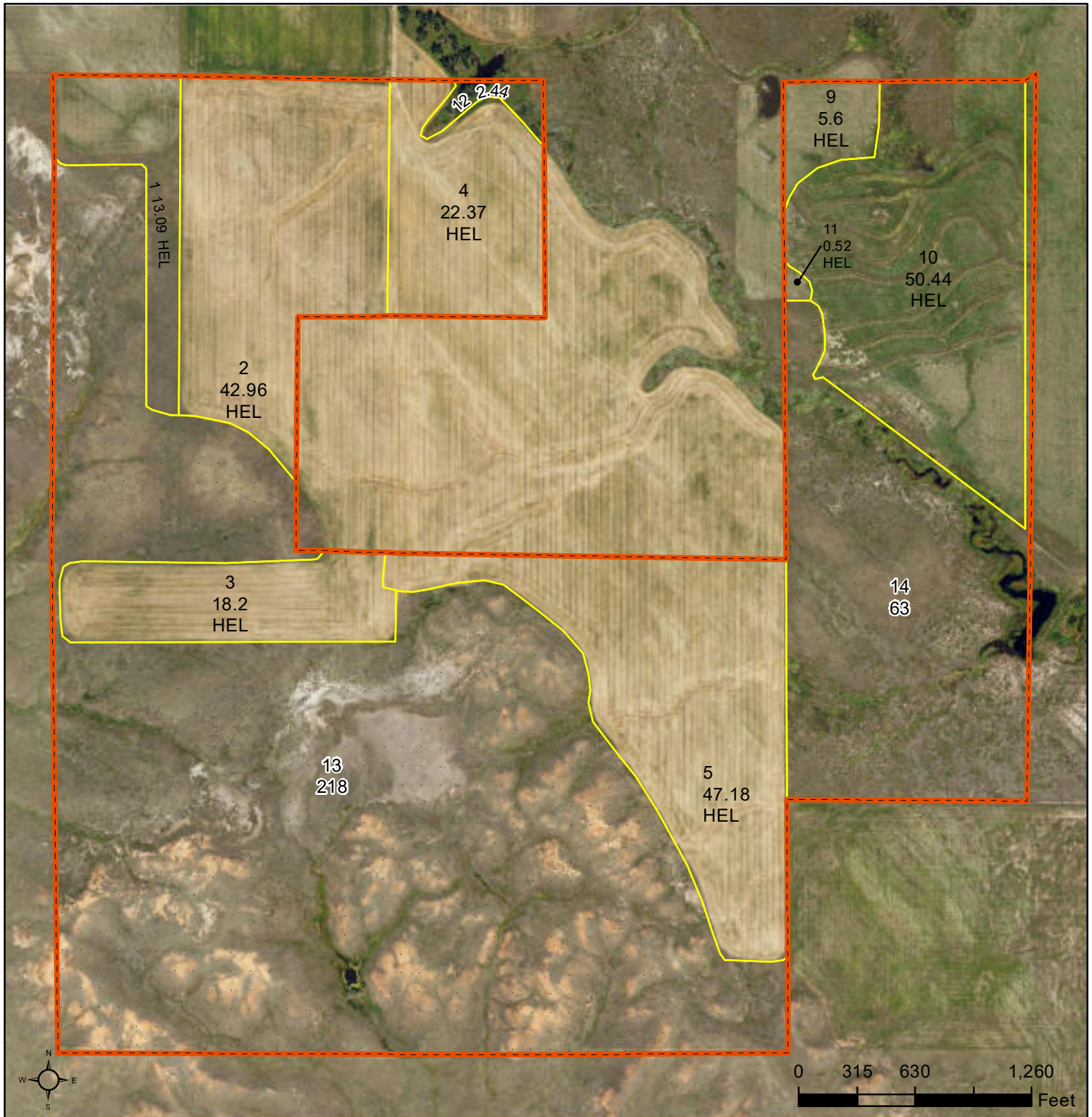
Map Created August 20, 2025
2021/2023 NAIP

Farm 1760

Tract 2477

26-3N-61E

United States Department of Agriculture (USDA) Farm Service Agency (FSA) maps are for FSA Program administration only. This map does not represent a legal survey or reflect actual ownership; rather it depicts the information provided directly from the producer and/or National Agricultural Imagery Program (NAIP) imagery. The producer accepts the data 'as is' and assumes all risks associated with its use. USDA-FSA assumes no responsibility for actual or consequential damage incurred as a result of any user's reliance on this data outside FSA Programs. Wetland identifiers do not represent the size, shape, or specific determination of the area. Refer to your original determination (CPA-026 and attached maps) for exact boundaries and determinations or contact USDA Natural Resources Conservation Service (NRCS).



Common Land Unit Tract Boundary

- Cropland
- Rangeland

Wetland Determination Identifiers

- Restricted Use
- Limited Restrictions
- Exempt from Conservation Compliance Provisions

Tract Cropland Total: 200.36 acres

2026 Program Year

Map Created August 20, 2025
2021/2023 NAIP

Farm 1760

Tract 2504

35-3N-61E

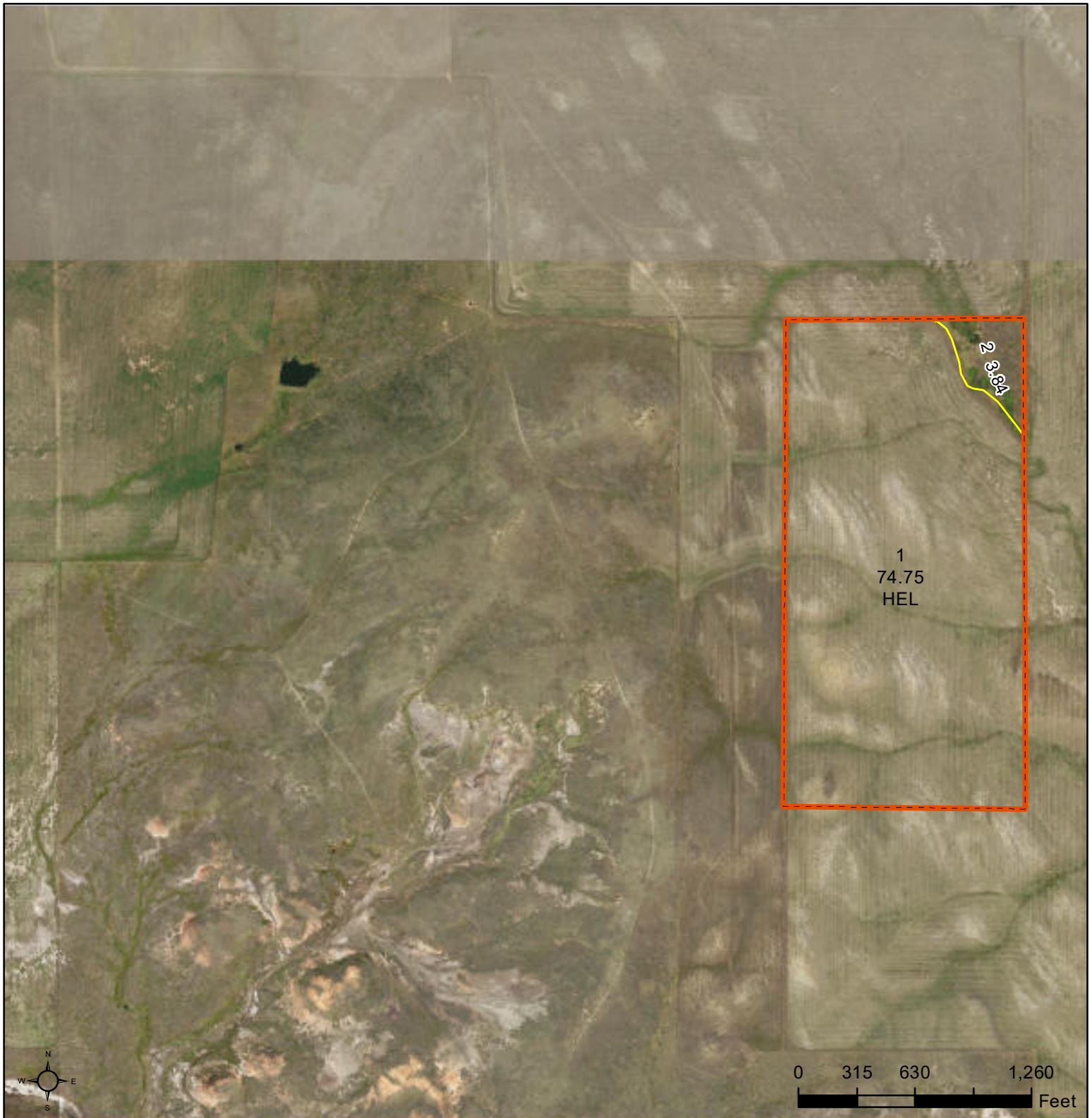
United States Department of Agriculture (USDA) Farm Service Agency (FSA) maps are for FSA Program administration only. This map does not represent a legal survey or reflect actual ownership; rather it depicts the information provided directly from the producer and/or National Agricultural Imagery Program (NAIP) imagery. The producer accepts the data 'as is' and assumes all risks associated with its use. USDA-FSA assumes no responsibility for actual or consequential damage incurred as a result of any user's reliance on this data outside FSA Programs. Wetland identifiers do not represent the size, shape, or specific determination of the area. Refer to your original determination (CPA-026 and attached maps) for exact boundaries and determinations or contact USDA Natural Resources Conservation Service (NRCS).



United States
Department of
Agriculture

Fallon County, Montana




Parcel 1



Common Land Unit  Tract Boundary

-  Cropland
-  Rangeland

Wetland Determination Identifiers

-  Restricted Use
-  Limited Restrictions
-  Exempt from Conservation Compliance Provisions

Tract Cropland Total: 74.75 acres

2026 Program Year

Map Created August 20, 2025
2021/2023 NAIP

Farm 1760

Tract 4954

27-3N-61E

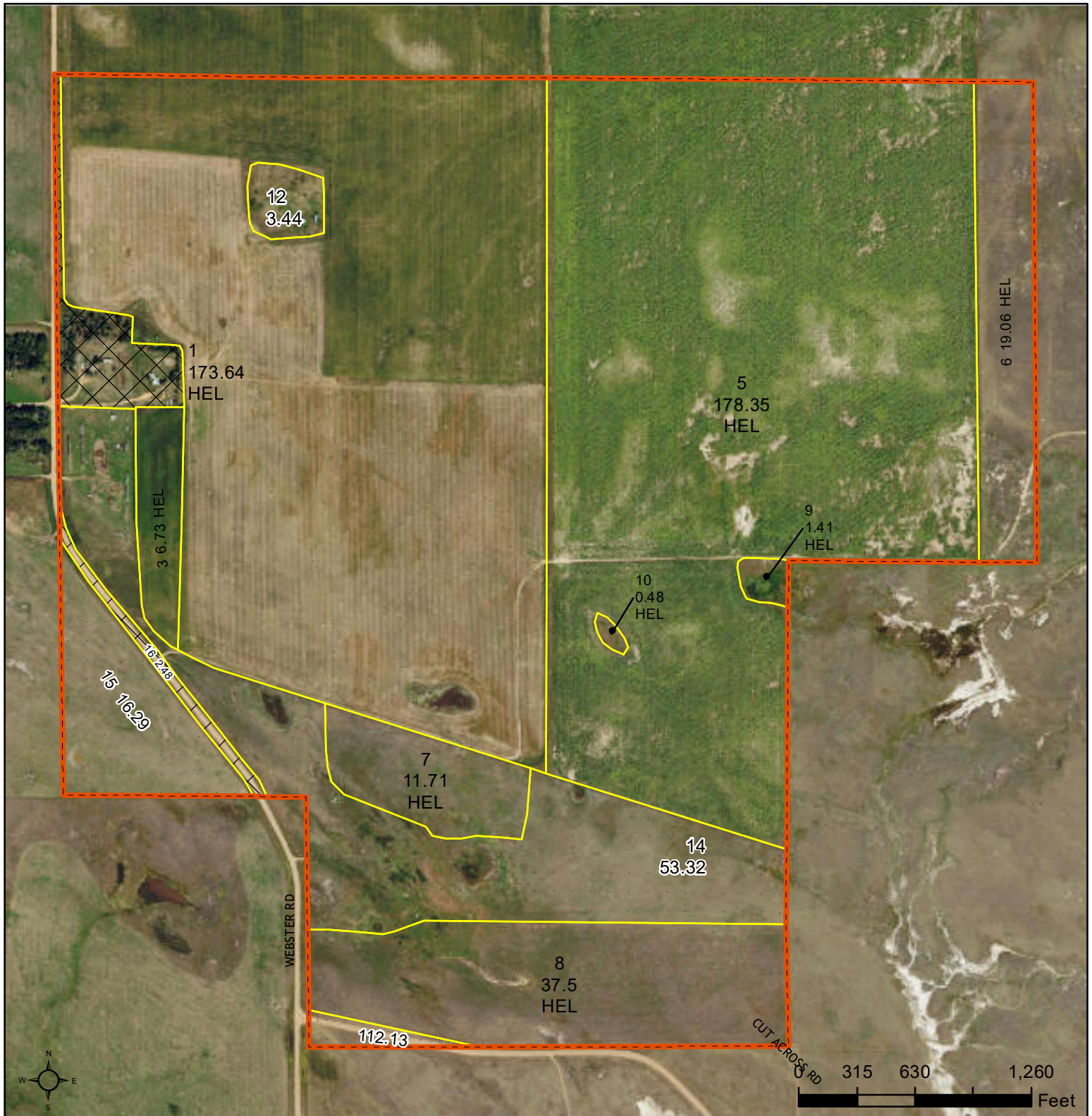
United States Department of Agriculture (USDA) Farm Service Agency (FSA) maps are for FSA Program administration only. This map does not represent a legal survey or reflect actual ownership; rather it depicts the information provided directly from the producer and/or National Agricultural Imagery Program (NAIP) imagery. The producer accepts the data 'as is' and assumes all risks associated with its use. USDA-FSA assumes no responsibility for actual or consequential damage incurred as a result of any user's reliance on this data outside FSA Programs. Wetland identifiers do not represent the size, shape, or specific determination of the area. Refer to your original determination (CPA-026 and attached maps) for exact boundaries and determinations or contact USDA Natural Resources Conservation Service (NRCS).



United States
Department of
Agriculture

Fallon County, Montana

Parcels 1 & 2



Common Land Unit

- Cropland
- Rangeland
- Other Use
- Tract Boundary

Wetland Determination Identifiers

- Restricted Use
- Limited Restrictions
- Exempt from Conservation Compliance Provisions

Tract Cropland Total: 428.88 acres

2026 Program Year

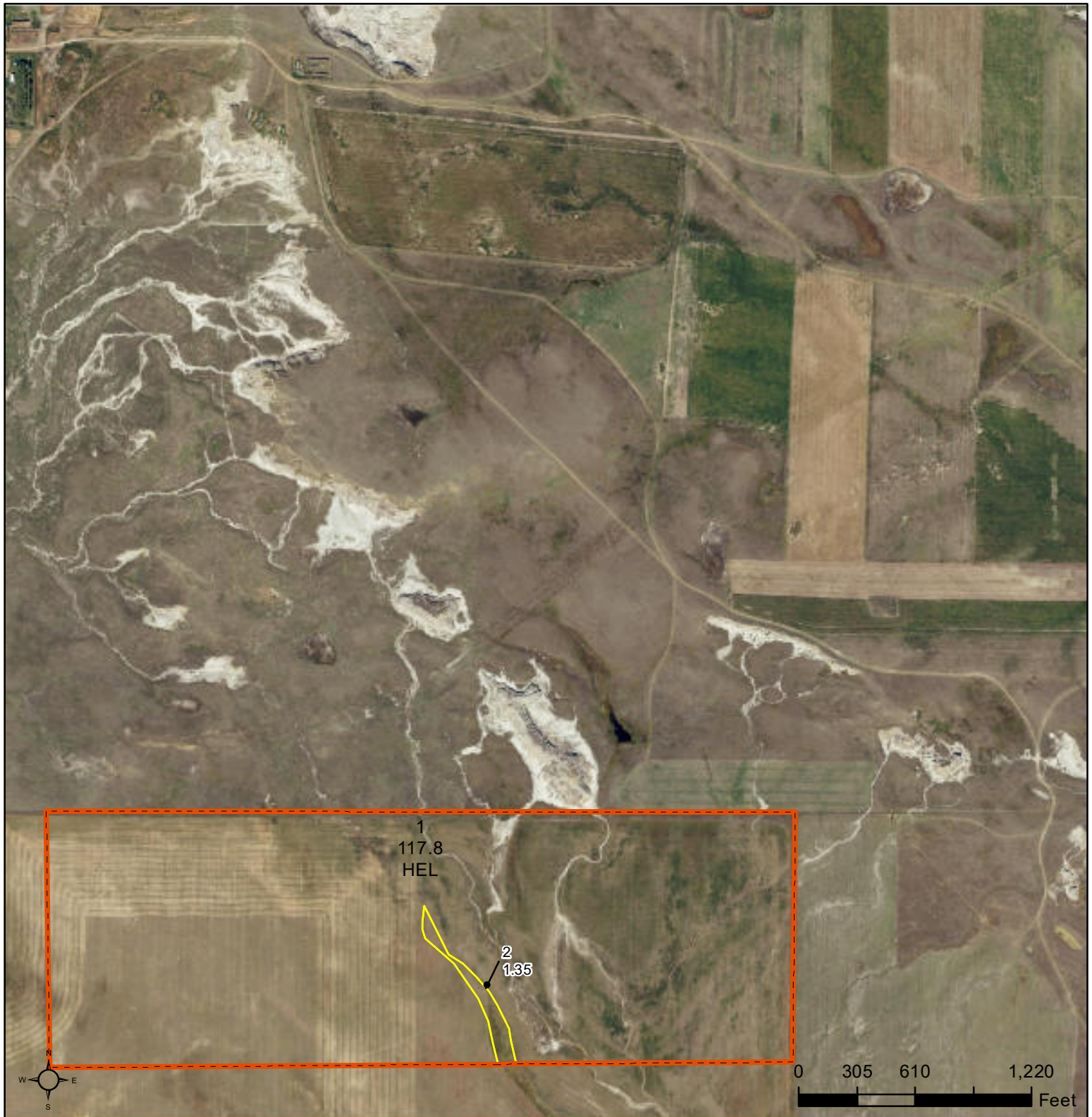
Map Created August 20, 2025
2021/2023 NAIP

Farm **1760**

Tract **2474**

25-3N-61E




United States Department of Agriculture (USDA) Farm Service Agency (FSA) maps are for FSA Program administration only. This map does not represent a legal survey or reflect actual ownership; rather it depicts the information provided directly from the producer and/or National Agricultural Imagery Program (NAIP) imagery. The producer accepts the data 'as is' and assumes all risks associated with its use. USDA-FSA assumes no responsibility for actual or consequential damage incurred as a result of any user's reliance on this data outside FSA Programs. Wetland identifiers do not represent the size, shape, or specific determination of the area. Refer to your original determination (CPA-026 and attached maps) for exact boundaries and determinations or contact USDA Natural Resources Conservation Service (NRCS).



Common Land Unit  Tract Boundary

-  Cropland
-  Rangeland

Wetland Determination Identifiers

-  Restricted Use
-  Limited Restrictions
-  Exempt from Conservation Compliance Provisions

Tract Cropland Total: 117.80 acres

2026 Program Year

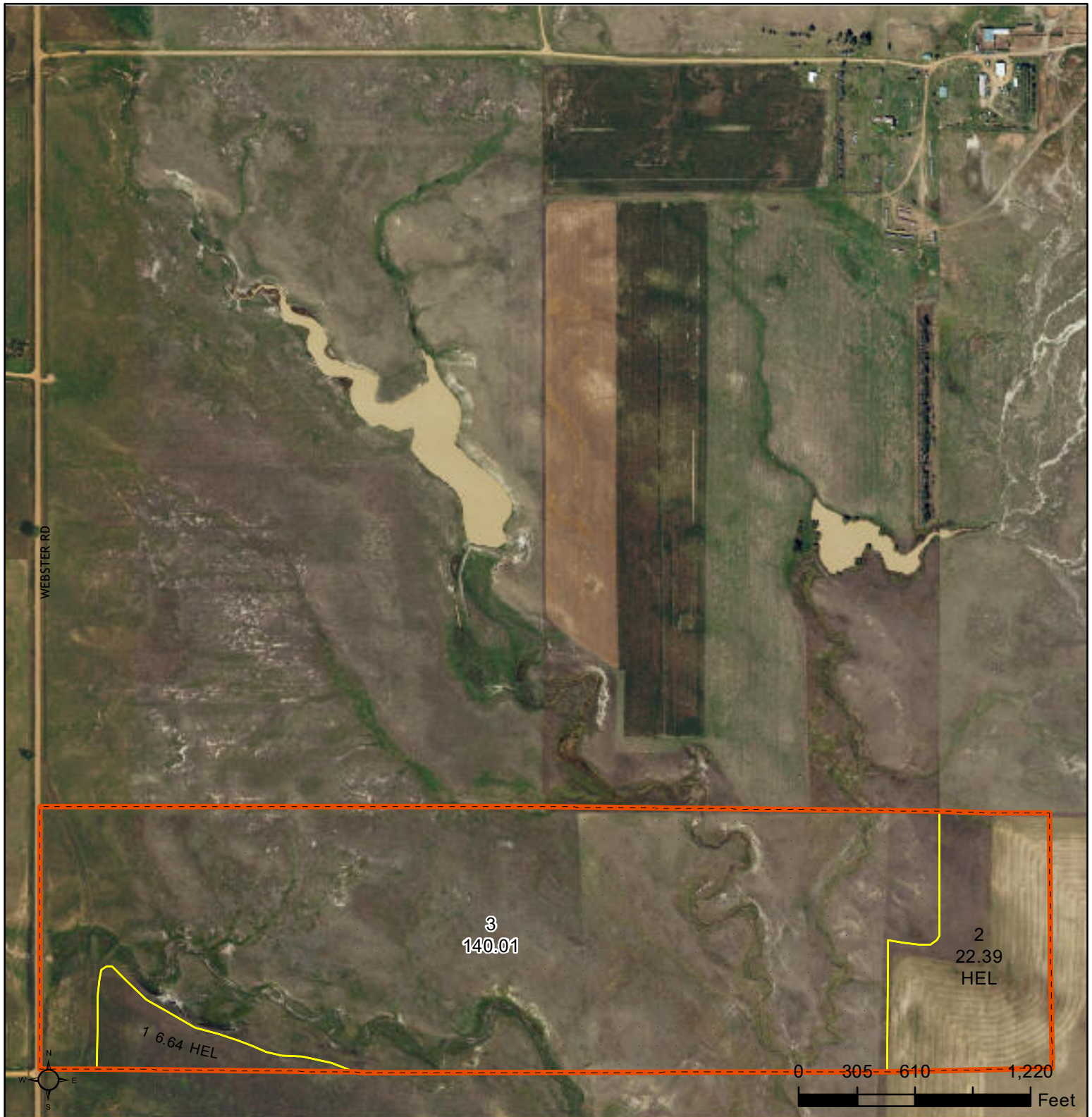
Map Created August 20, 2025
2021/2023 NAIP


Farm 1760

Tract 2386

18-3N-62E




United States Department of Agriculture (USDA) Farm Service Agency (FSA) maps are for FSA Program administration only. This map does not represent a legal survey or reflect actual ownership; rather it depicts the information provided directly from the producer and/or National Agricultural Imagery Program (NAIP) imagery. The producer accepts the data 'as is' and assumes all risks associated with its use. USDA-FSA assumes no responsibility for actual or consequential damage incurred as a result of any user's reliance on this data outside FSA Programs. Wetland identifiers do not represent the size, shape, or specific determination of the area. Refer to your original determination (CPA-026 and attached maps) for exact boundaries and determinations or contact USDA Natural Resources Conservation Service (NRCS).



Common Land Unit  Tract Boundary

-  Cropland
-  Rangeland

Wetland Determination Identifiers

-  Restricted Use
-  Limited Restrictions
-  Exempt from Conservation Compliance Provisions

Tract Cropland Total: 29.03 acres

2026 Program Year

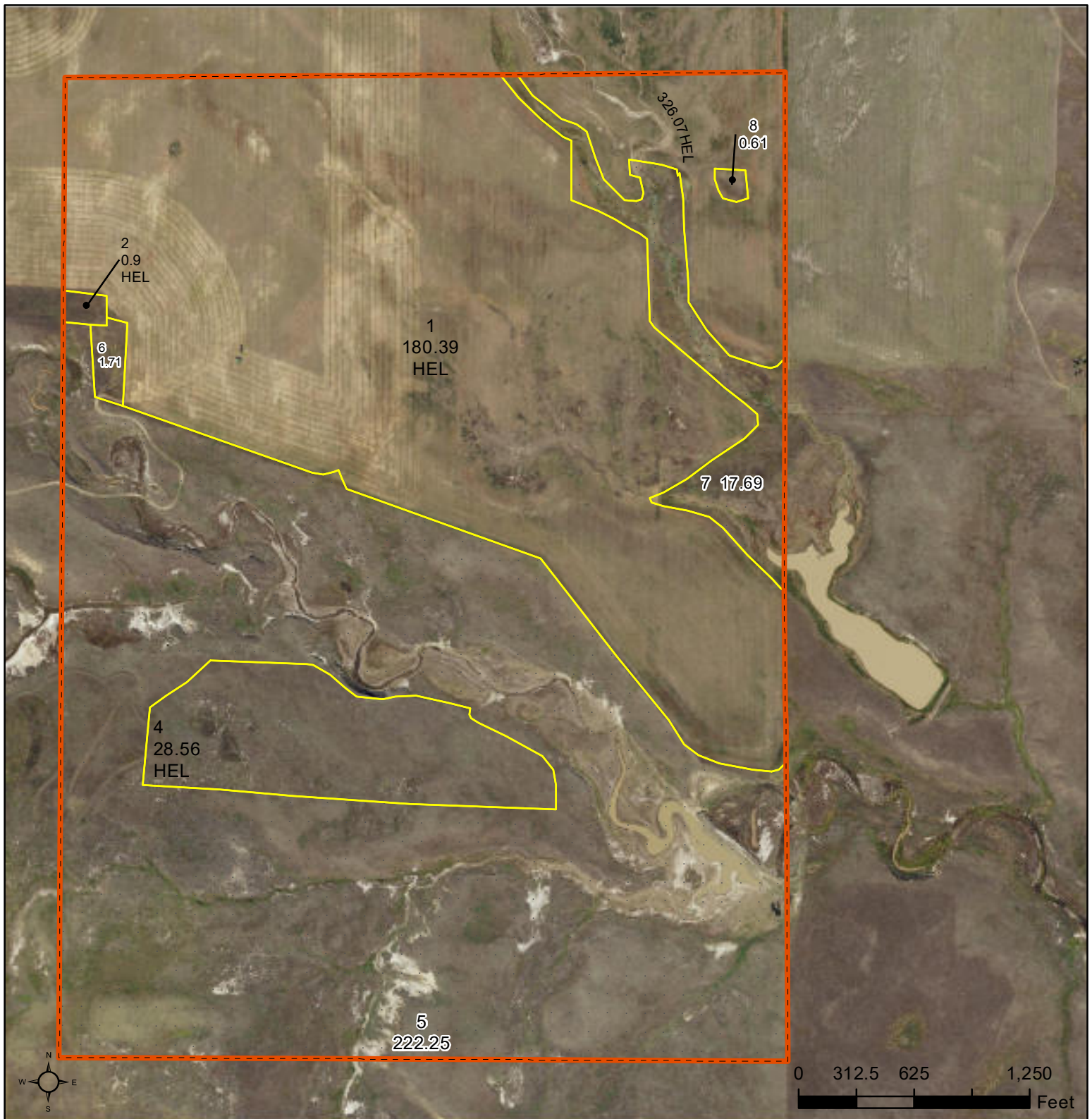
Map Created August 20, 2025
2021/2023 NAIP

Farm 1760

Tract 2439

13-3N-61E

United States Department of Agriculture (USDA) Farm Service Agency (FSA) maps are for FSA Program administration only. This map does not represent a legal survey or reflect actual ownership; rather it depicts the information provided directly from the producer and/or National Agricultural Imagery Program (NAIP) imagery. The producer accepts the data 'as is' and assumes all risks associated with its use. USDA-FSA assumes no responsibility for actual or consequential damage incurred as a result of any user's reliance on this data outside FSA Programs. Wetland identifiers do not represent the size, shape, or specific determination of the area. Refer to your original determination (CPA-026 and attached maps) for exact boundaries and determinations or contact USDA Natural Resources Conservation Service (NRCS).



Common Land Unit Tract Boundary

- Cropland
- Rangeland

Wetland Determination Identifiers

- Restricted Use
- Limited Restrictions
- Exempt from Conservation Compliance Provisions

Tract Cropland Total: 235.92 acres

2026 Program Year

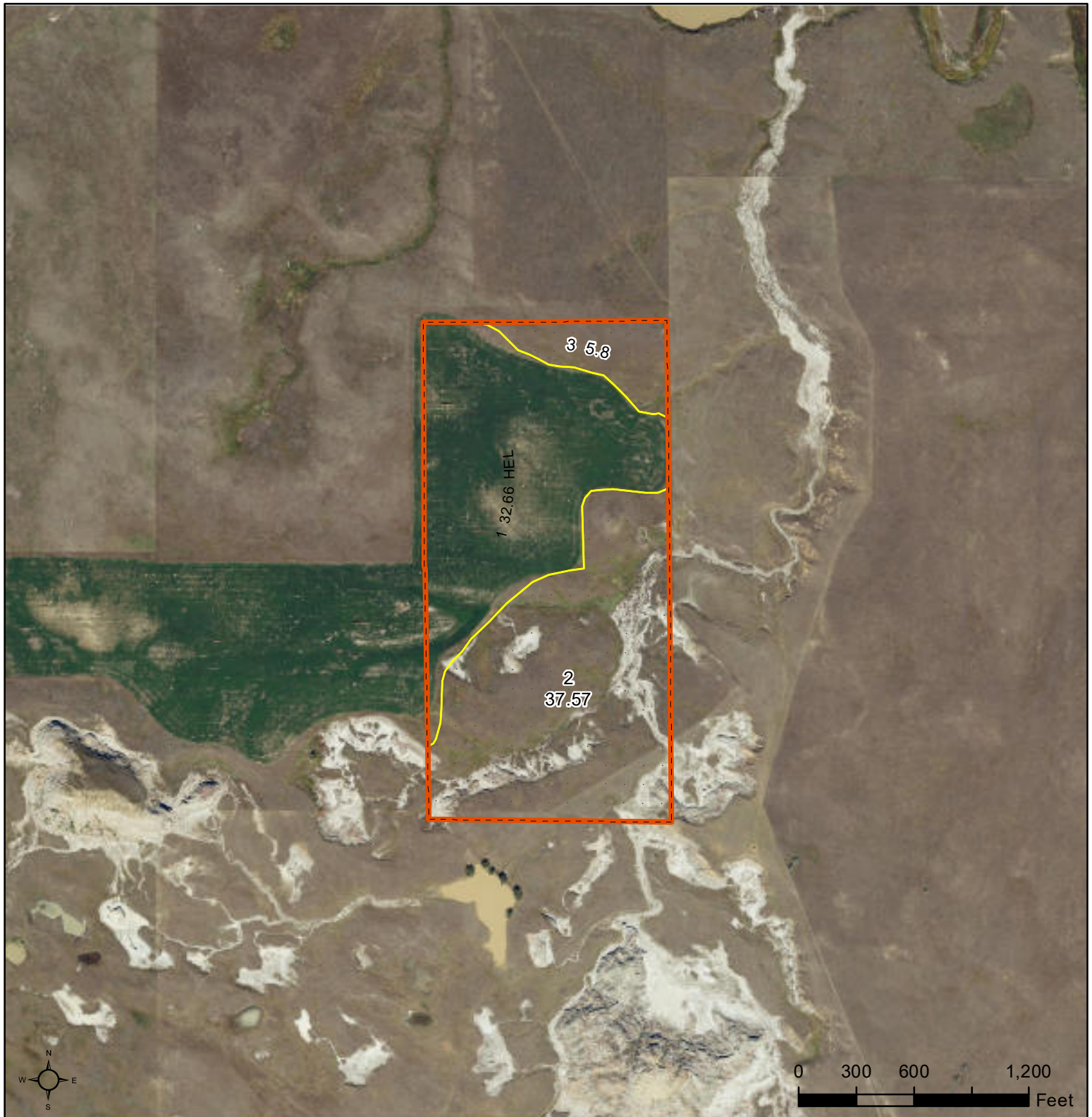
Map Created August 20, 2025
2021/2023 NAIP

Farm 1760

Tract 2387

19-3N-62E




United States Department of Agriculture (USDA) Farm Service Agency (FSA) maps are for FSA Program administration only. This map does not represent a legal survey or reflect actual ownership; rather it depicts the information provided directly from the producer and/or National Agricultural Imagery Program (NAIP) imagery. The producer accepts the data 'as is' and assumes all risks associated with its use. USDA-FSA assumes no responsibility for actual or consequential damage incurred as a result of any user's reliance on this data outside FSA Programs. Wetland identifiers do not represent the size, shape, or specific determination of the area. Refer to your original determination (CPA-026 and attached maps) for exact boundaries and determinations or contact USDA Natural Resources Conservation Service (NRCS).



Common Land Unit  Tract Boundary

-  Cropland
-  Rangeland

Wetland Determination Identifiers

-  Restricted Use
-  Limited Restrictions
-  Exempt from Conservation Compliance Provisions

Tract Cropland Total: 32.66 acres

2026 Program Year

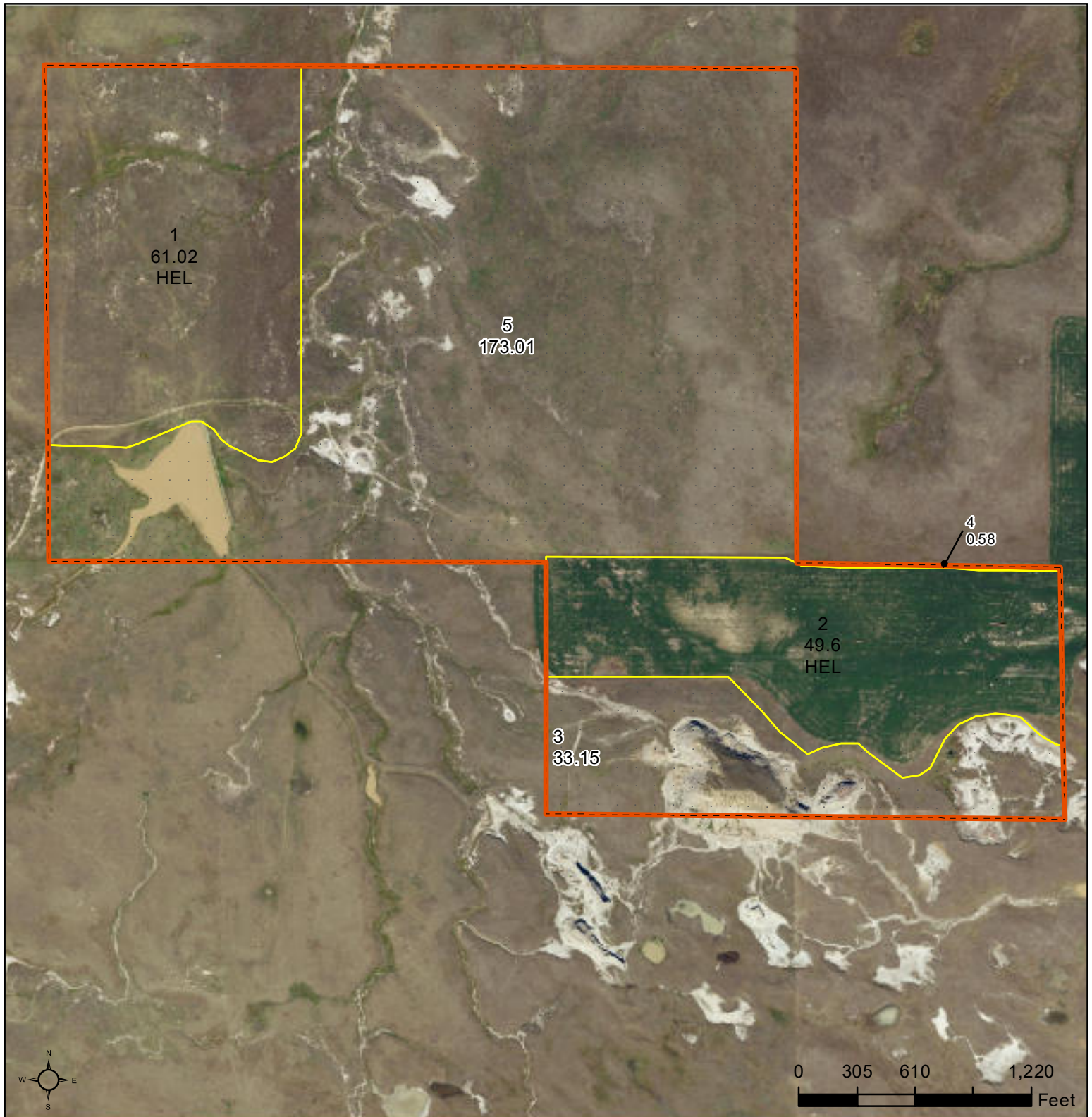
Map Created August 20, 2025
2021/2023 NAIP

Farm 1760

Tract 2391

29-3N-62E

United States Department of Agriculture (USDA) Farm Service Agency (FSA) maps are for FSA Program administration only. This map does not represent a legal survey or reflect actual ownership; rather it depicts the information provided directly from the producer and/or National Agricultural Imagery Program (NAIP) imagery. The producer accepts the data 'as is' and assumes all risks associated with its use. USDA-FSA assumes no responsibility for actual or consequential damage incurred as a result of any user's reliance on this data outside FSA Programs. Wetland identifiers do not represent the size, shape, or specific determination of the area. Refer to your original determination (CPA-026 and attached maps) for exact boundaries and determinations or contact USDA Natural Resources Conservation Service (NRCS).



Common Land Unit Tract Boundary

- Cropland
- Rangeland

Wetland Determination Identifiers

- Restricted Use
- Limited Restrictions
- Exempt from Conservation Compliance Provisions

Tract Cropland Total: 110.62 acres

2026 Program Year

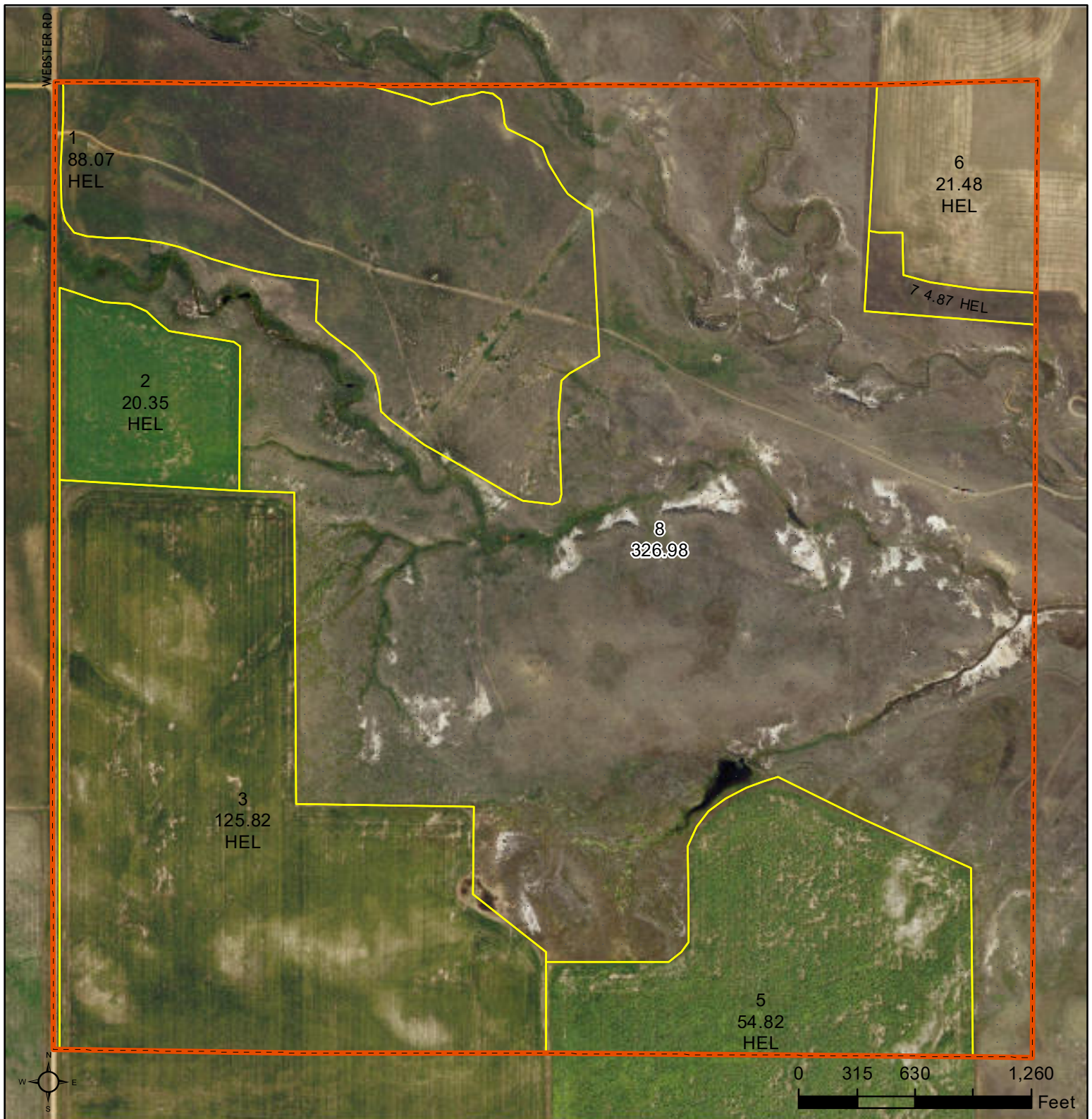
Map Created August 20, 2025
2021/2023 NAIP

Farm 1760

Tract 2394

30-3N-62E




United States Department of Agriculture (USDA) Farm Service Agency (FSA) maps are for FSA Program administration only. This map does not represent a legal survey or reflect actual ownership; rather it depicts the information provided directly from the producer and/or National Agricultural Imagery Program (NAIP) imagery. The producer accepts the data 'as is' and assumes all risks associated with its use. USDA-FSA assumes no responsibility for actual or consequential damage incurred as a result of any user's reliance on this data outside FSA Programs. Wetland identifiers do not represent the size, shape, or specific determination of the area. Refer to your original determination (CPA-026 and attached maps) for exact boundaries and determinations or contact USDA Natural Resources Conservation Service (NRCS).



Common Land Unit  Tract Boundary

-  Cropland
-  Rangeland

Wetland Determination Identifiers

-  Restricted Use
-  Limited Restrictions
-  Exempt from Conservation Compliance Provisions

Tract Cropland Total: 315.41 acres

2026 Program Year

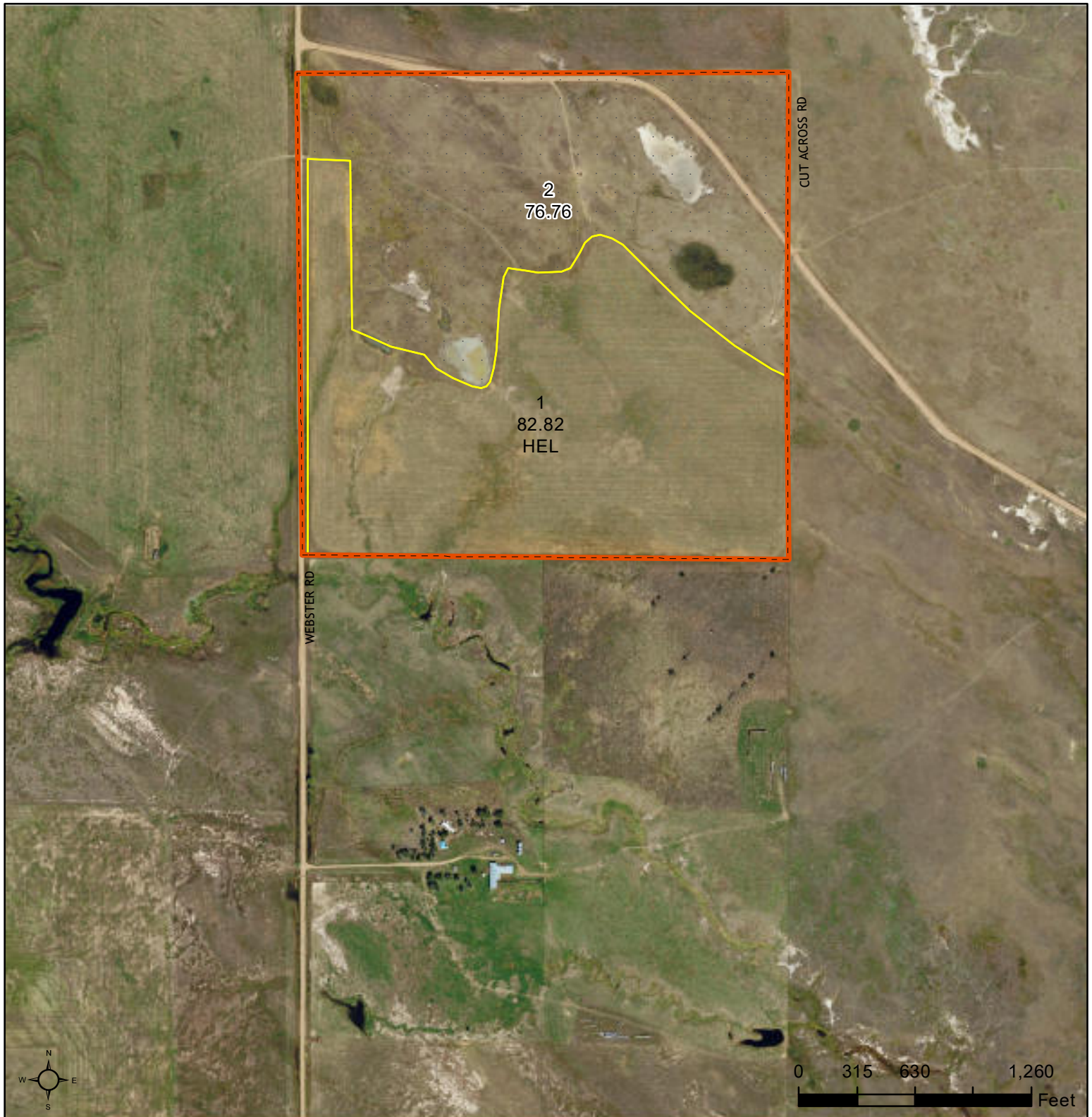
Map Created August 20, 2025
2021/2023 NAIP

Farm 1760

Tract 2473

24-3N-61E




United States Department of Agriculture (USDA) Farm Service Agency (FSA) maps are for FSA Program administration only. This map does not represent a legal survey or reflect actual ownership; rather it depicts the information provided directly from the producer and/or National Agricultural Imagery Program (NAIP) imagery. The producer accepts the data 'as is' and assumes all risks associated with its use. USDA-FSA assumes no responsibility for actual or consequential damage incurred as a result of any user's reliance on this data outside FSA Programs. Wetland identifiers do not represent the size, shape, or specific determination of the area. Refer to your original determination (CPA-026 and attached maps) for exact boundaries and determinations or contact USDA Natural Resources Conservation Service (NRCS).



Common Land Unit  Tract Boundary

-  Cropland
-  Rangeland

Wetland Determination Identifiers

-  Restricted Use
-  Limited Restrictions
-  Exempt from Conservation Compliance Provisions

Tract Cropland Total: 82.82 acres

2026 Program Year

Map Created August 20, 2025
2021/2023 NAIP

Farm 1760

Tract 2508

36-3N-61E

United States Department of Agriculture (USDA) Farm Service Agency (FSA) maps are for FSA Program administration only. This map does not represent a legal survey or reflect actual ownership; rather it depicts the information provided directly from the producer and/or National Agricultural Imagery Program (NAIP) imagery. The producer accepts the data 'as is' and assumes all risks associated with its use. USDA-FSA assumes no responsibility for actual or consequential damage incurred as a result of any user's reliance on this data outside FSA Programs. Wetland identifiers do not represent the size, shape, or specific determination of the area. Refer to your original determination (CPA-026 and attached maps) for exact boundaries and determinations or contact USDA Natural Resources Conservation Service (NRCS).

Bowman County, ND

Farm 5283

S27 T129N R107W

Phy. Cnty: Bowman

2025 Program Year

2023 imagery
Map Created 04/14/2025



Unless Otherwise Noted:

Barley = Spring for Grain
Canola = Spring for Processing
Corn = Yellow for Grain
Flax = Common for Grain
Oats = Spring for Grain
Soybeans = Common for Grain
Sunflowers = Oil for Grain
Wheat = Spring for Grain
All fields are non-irrigated
Shares are 100% to operator

Parcel 3

Tract Boundary

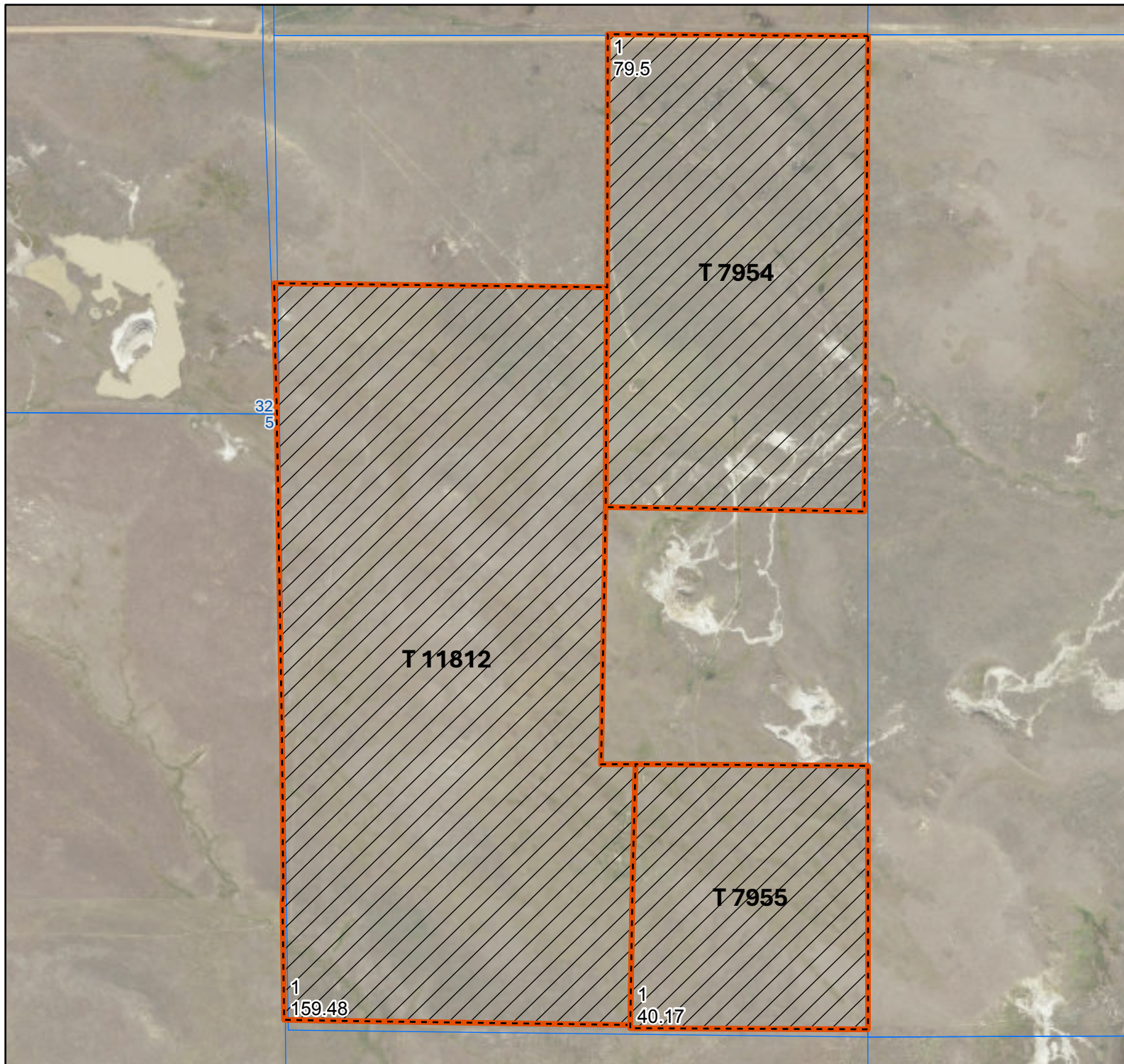
Noncropland

PLSS

Wetland Determination Identifiers

- Restricted Use
- Limited Restrictions
- Exempt from
- Conservation

Compliance Provisions



Bowman County, ND

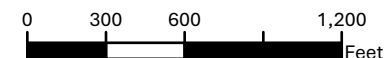
Farm 5462

S23 T129N R107W

Phy. Cnty: Bowman

2025 Program Year

2023 imagery
Map Created 04/14/2025



Unless Otherwise Noted:

Barley = Spring for Grain
Canola = Spring for Processing
Corn = Yellow for Grain
Flax = Common for Grain
Oats = Spring for Grain
Soybeans = Common for Grain
Sunflowers = Oil for Grain
Wheat = Spring for Grain
All fields are non-irrigated
Shares are 100% to operator

Parcel 3

Tract Boundary

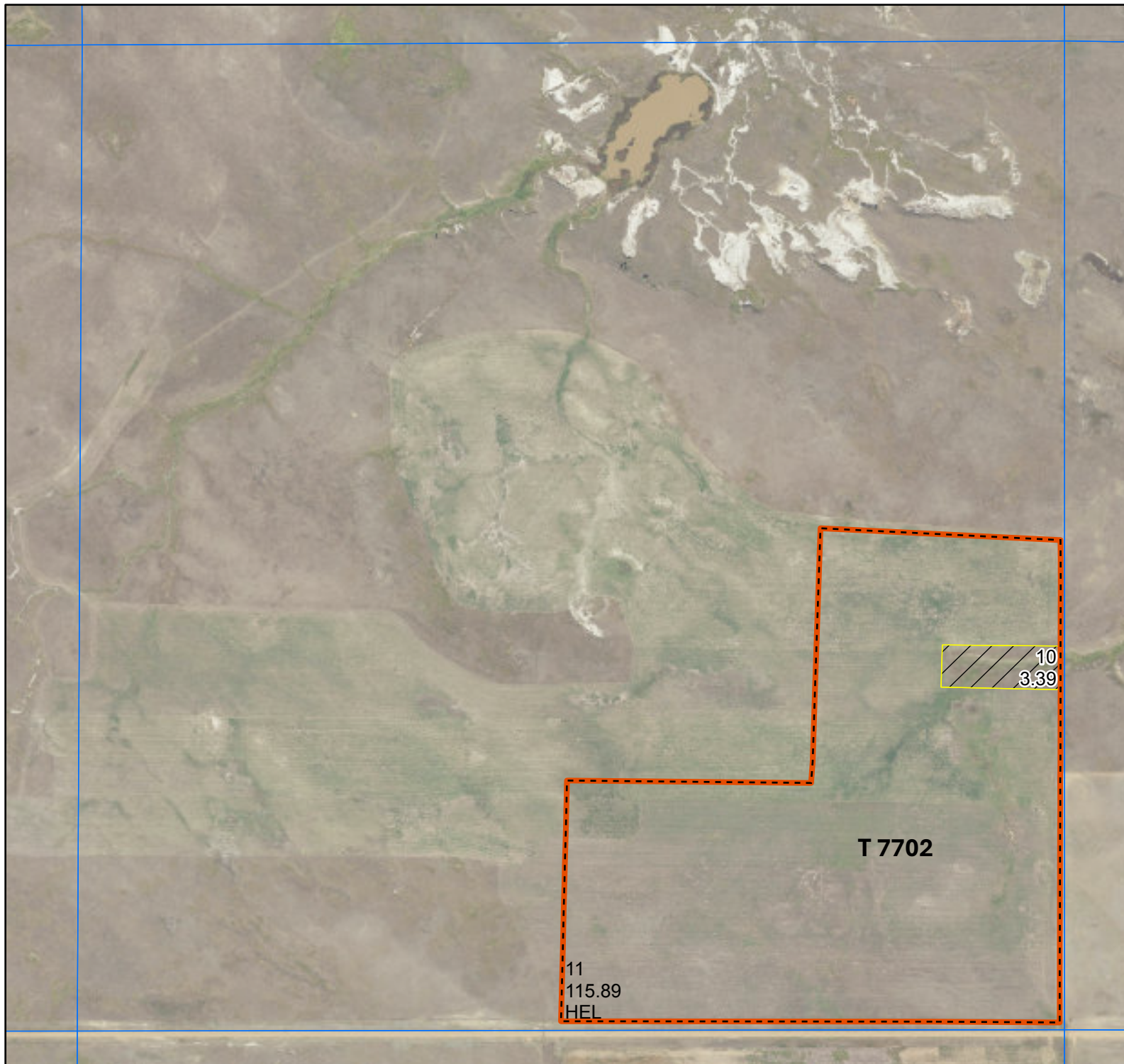
Noncropland

Cropland

PLSS

Wetland Determination Identifiers

- Restricted Use
 - Limited Restrictions
 - Exempt from Conservation
- Compliance Provisions

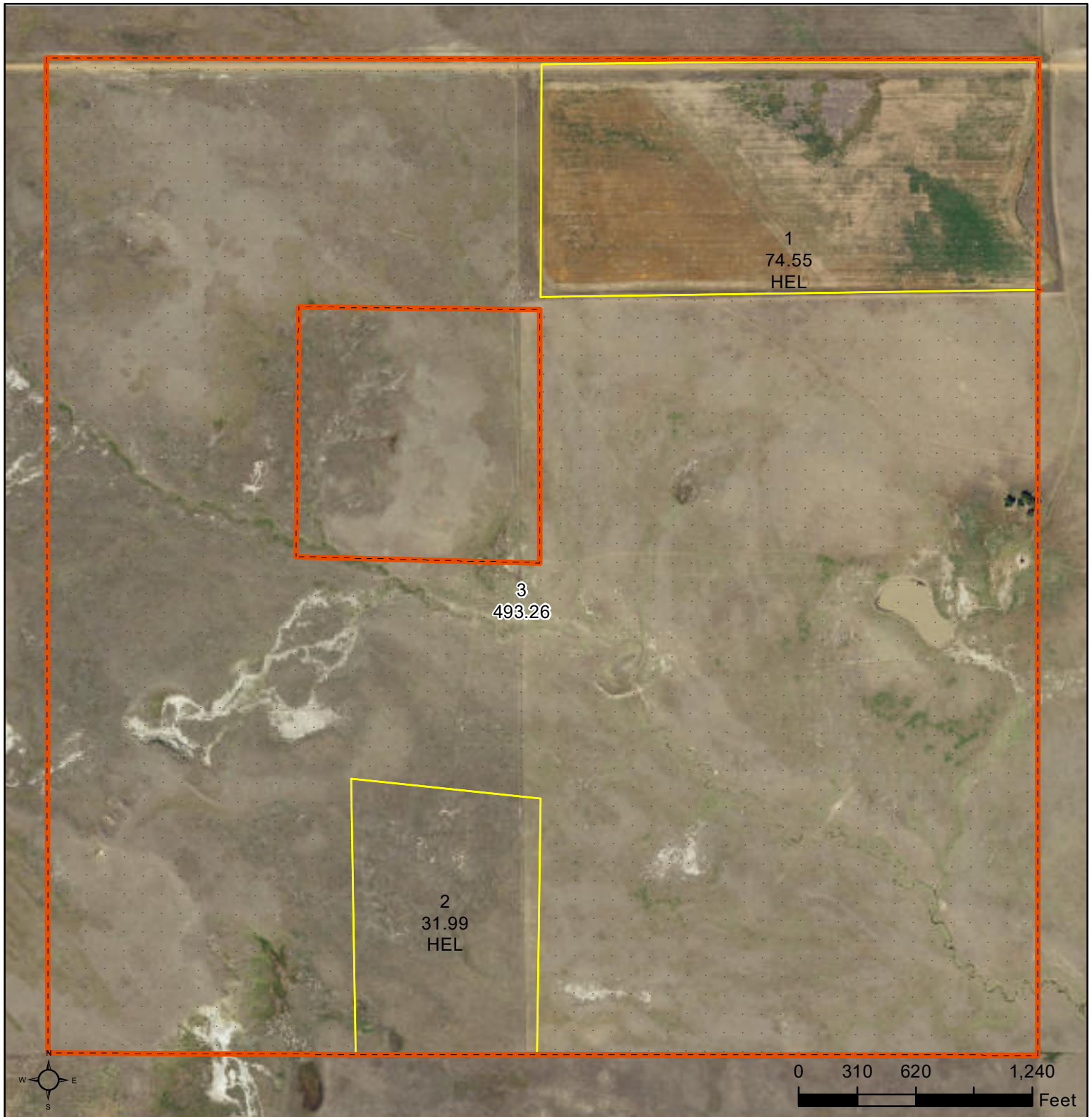




United States
Department of
Agriculture

Fallon County, Montana




Parcels 3 & 4



Common Land Unit  Tract Boundary

-  Cropland
-  Rangeland

Wetland Determination Identifiers

-  Restricted Use
-  Limited Restrictions
-  Exempt from Conservation Compliance Provisions

Tract Cropland Total: 106.54 acres

2026 Program Year

Map Created August 20, 2025
2021/2023 NAIP

Farm 1760

Tract 2810

26-129N-107W

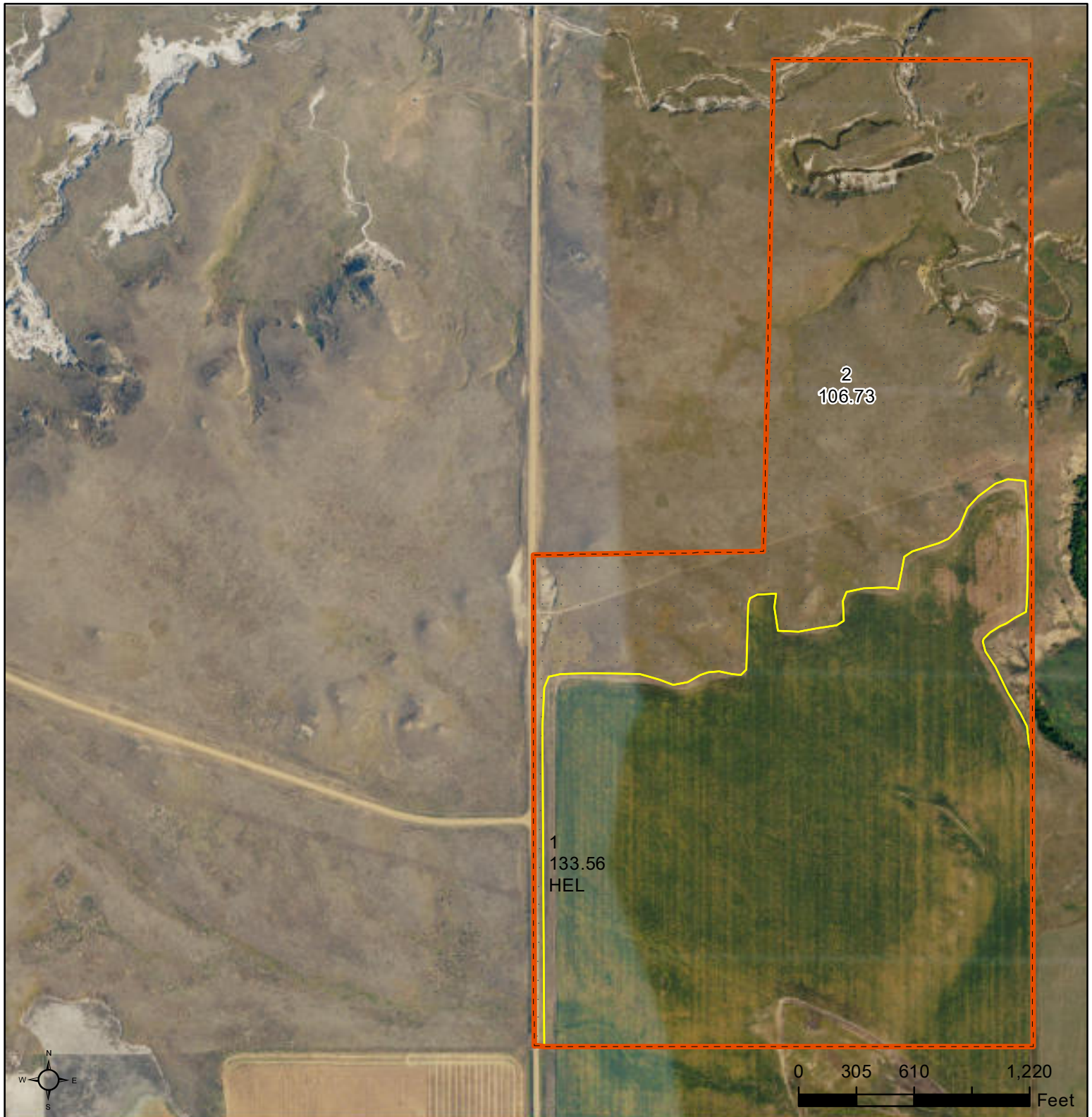
United States Department of Agriculture (USDA) Farm Service Agency (FSA) maps are for FSA Program administration only. This map does not represent a legal survey or reflect actual ownership; rather it depicts the information provided directly from the producer and/or National Agricultural Imagery Program (NAIP) imagery. The producer accepts the data 'as is' and assumes all risks associated with its use. USDA-FSA assumes no responsibility for actual or consequential damage incurred as a result of any user's reliance on this data outside FSA Programs. Wetland identifiers do not represent the size, shape, or specific determination of the area. Refer to your original determination (CPA-026 and attached maps) for exact boundaries and determinations or contact USDA Natural Resources Conservation Service (NRCS).



United States
Department of
Agriculture

Fallon County, Montana

Parcels 4 & 6



Common Land Unit Tract Boundary

- Cropland
- Rangeland

Wetland Determination Identifiers

- Restricted Use
- Limited Restrictions
- Exempt from Conservation Compliance Provisions

Tract Cropland Total: 133.56 acres

2026 Program Year

Map Created August 20, 2025
2021/2023 NAIP

Farm 1760

Tract 2817

30-129N-106W

United States Department of Agriculture (USDA) Farm Service Agency (FSA) maps are for FSA Program administration only. This map does not represent a legal survey or reflect actual ownership; rather it depicts the information provided directly from the producer and/or National Agricultural Imagery Program (NAIP) imagery. The producer accepts the data 'as is' and assumes all risks associated with its use. USDA-FSA assumes no responsibility for actual or consequential damage incurred as a result of any user's reliance on this data outside FSA Programs. Wetland identifiers do not represent the size, shape, or specific determination of the area. Refer to your original determination (CPA-026 and attached maps) for exact boundaries and determinations or contact USDA Natural Resources Conservation Service (NRCS).

Bowman County, ND

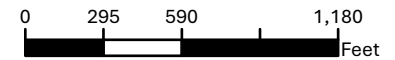
Farm 5283

S19 T129N R106W

Phy. Cnty: Bowman

2025 Program Year

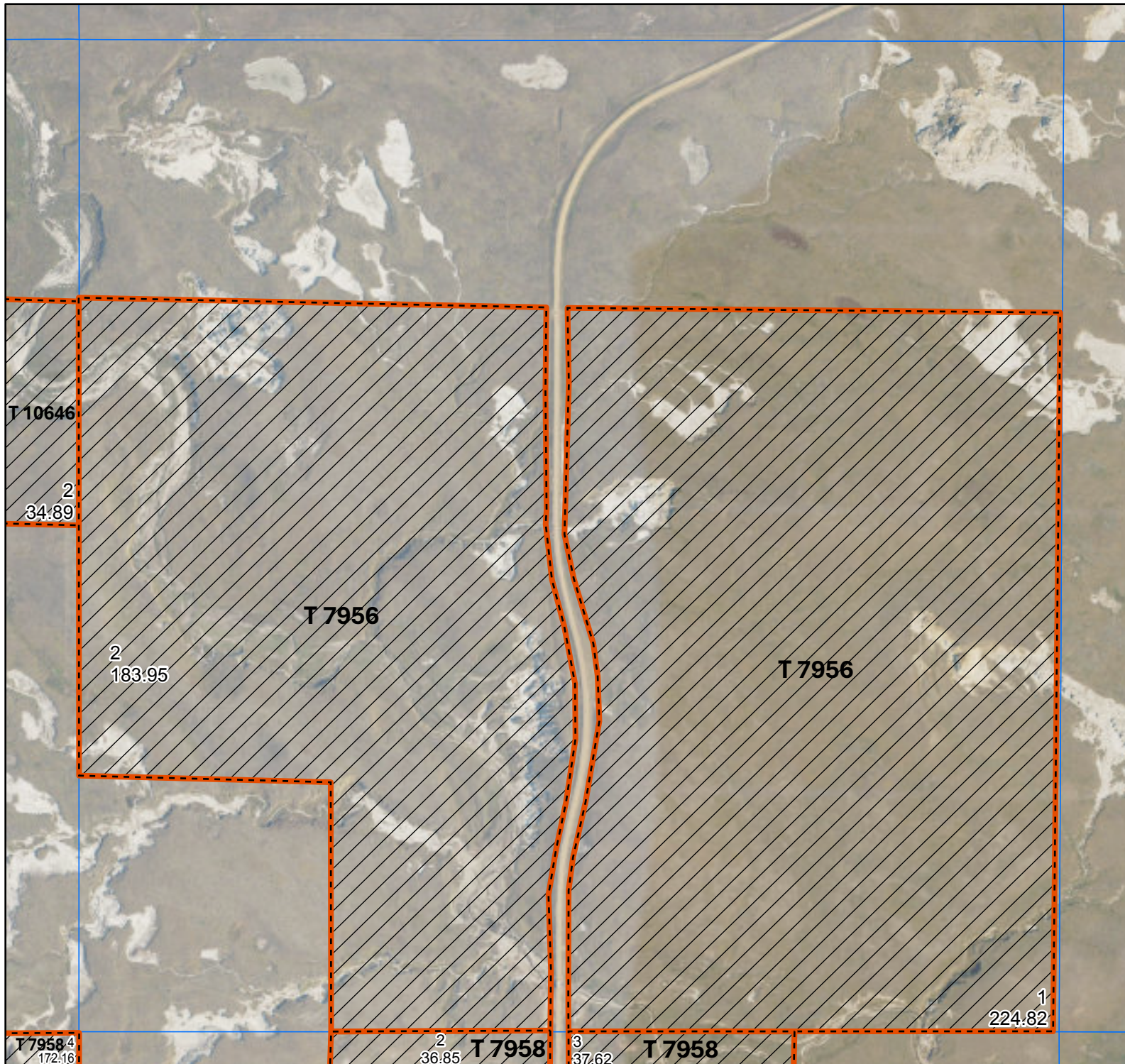
2023 imagery
Map Created 04/14/2025



Unless Otherwise Noted:

- Barley = Spring for Grain
- Canola = Spring for Processing
- Corn = Yellow for Grain
- Flax = Common for Grain
- Oats = Spring for Grain
- Soybeans = Common for Grain
- Sunflowers = Oil for Grain
- Wheat = Spring for Grain
- All fields are non-irrigated
- Shares are 100% to operator

Parcel 4



Tract Boundary

Noncropland

PLSS

Wetland Determination Identifiers

- Restricted Use
- Limited Restrictions
- Exempt from
- Conservation
- Compliance Provisions

Bowman County, ND

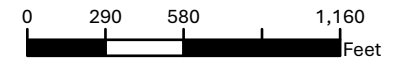
Farm 5283

S24 T129N R107W

Phy. Cnty: Bowman

2025 Program Year

2023 imagery
Map Created 04/14/2025



Unless Otherwise Noted:

Barley = Spring for Grain
Canola = Spring for Processing
Corn = Yellow for Grain
Flax = Common for Grain
Oats = Spring for Grain
Soybeans = Common for Grain
Sunflowers = Oil for Grain
Wheat = Spring for Grain
All fields are non-irrigated
Shares are 100% to operator

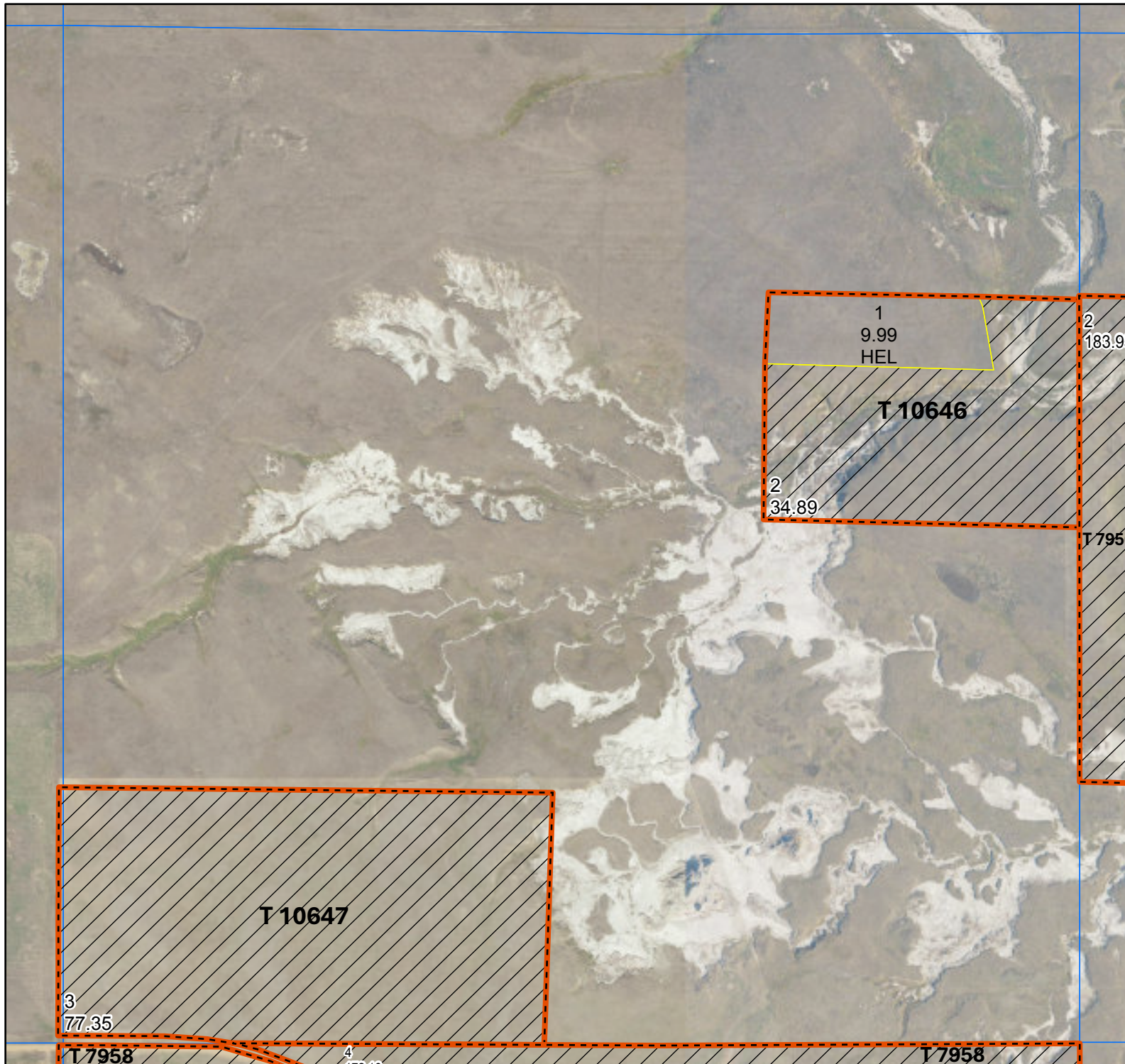
Parcel 4

- Tract Boundary
- Noncropland
- Cropland
- PLSS

Wetland Determination Identifiers

- Restricted Use
- Limited Restrictions
- Exempt from
- Conservation

Compliance Provisions



Bowman County, ND

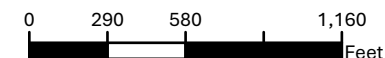
Farm 5283

S25 T129N R107W

Phy. Cnty: Bowman

2025 Program Year

2023 imagery
Map Created 04/14/2025



Unless Otherwise Noted:

- Barley = Spring for Grain
- Canola = Spring for Processing
- Corn = Yellow for Grain
- Flax = Common for Grain
- Oats = Spring for Grain
- Soybeans = Common for Grain
- Sunflowers = Oil for Grain
- Wheat = Spring for Grain
- All fields are non-irrigated
- Shares are 100% to operator

Parcel 4

Tract Boundary

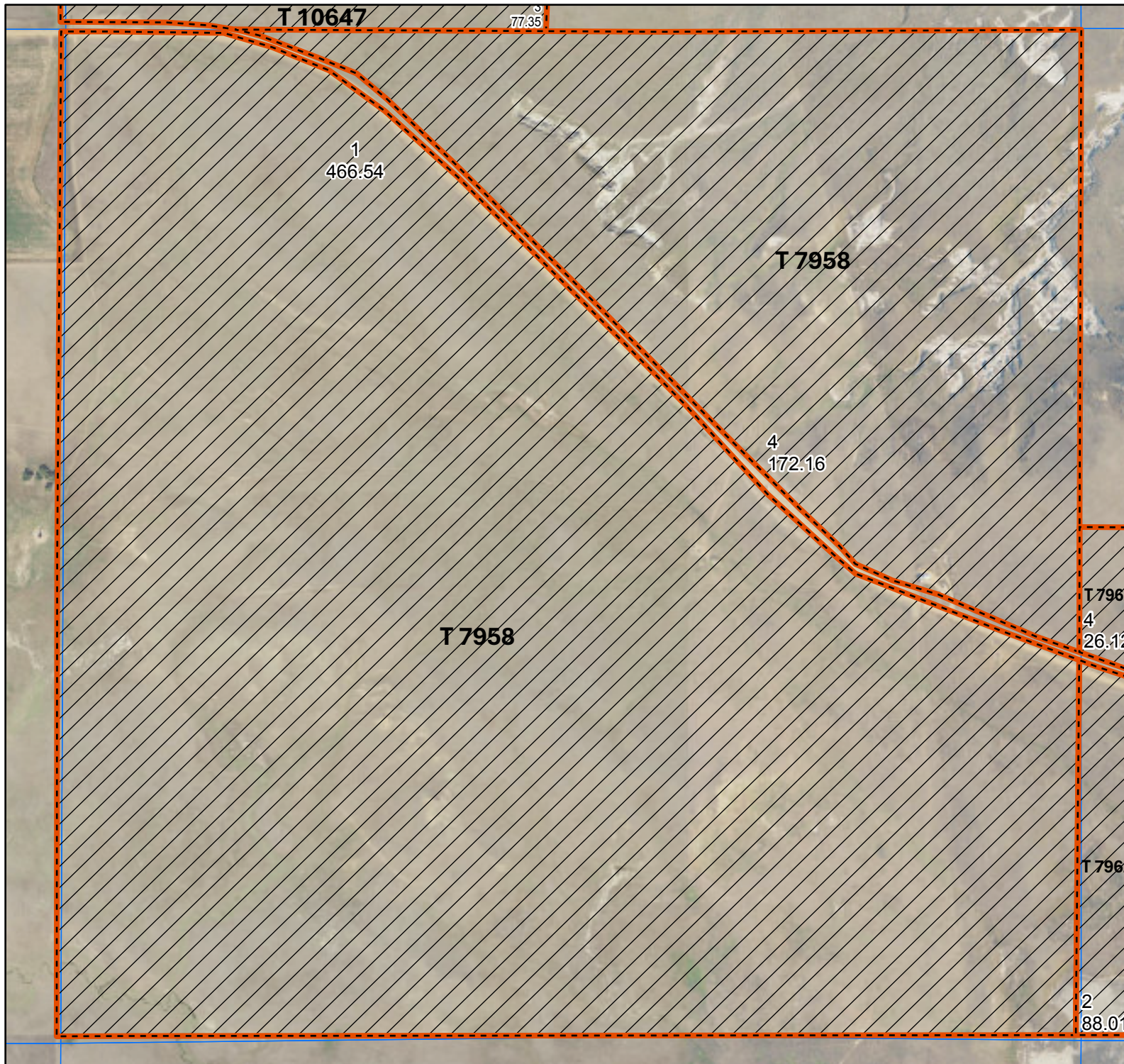
Noncropland

PLSS

Wetland Determination Identifiers

- Restricted Use
- Limited Restrictions
- Exempt from Conservation

Compliance Provisions



Bowman County, ND

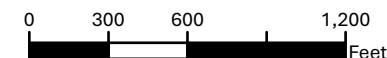
Farm 5283

S30 T129N R106W

Phy. Cnty: Bowman

2025 Program Year

2023 imagery
Map Created 04/14/2025



Unless Otherwise Noted:

Barley = Spring for Grain
Canola = Spring for Processing
Corn = Yellow for Grain
Flax = Common for Grain
Oats = Spring for Grain
Soybeans = Common for Grain
Sunflowers = Oil for Grain
Wheat = Spring for Grain
All fields are non-irrigated
Shares are 100% to operator

Parcel 4

Tract Boundary

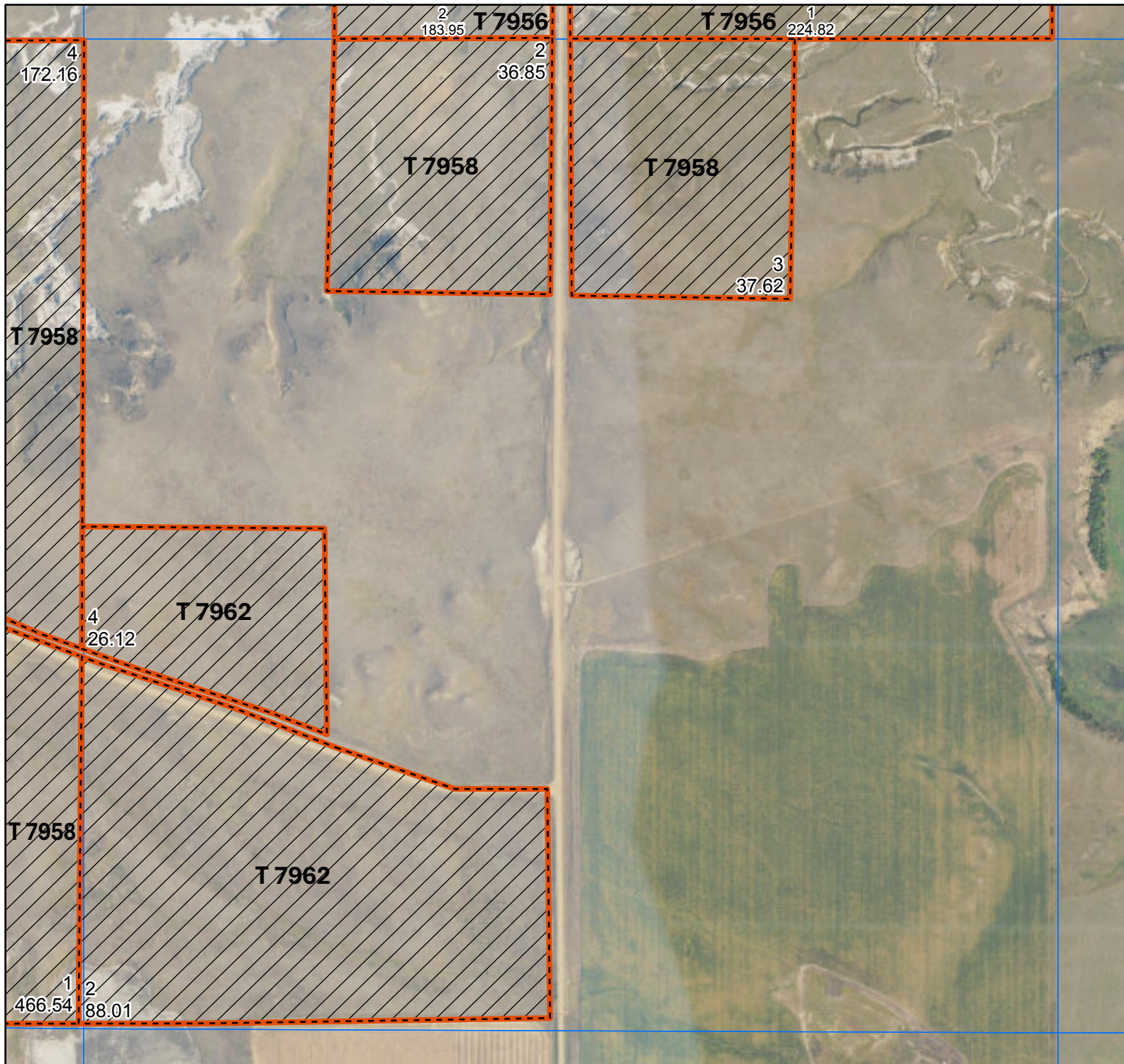
Noncropland

PLSS

Wetland Determination Identifiers

- Restricted Use
- Limited Restrictions
- Exempt from Conservation

Compliance Provisions



United States Department of Agriculture (USDA) Farm Service Agency (FSA) maps are for FSA Program administration only. This map does not represent a legal survey or reflect actual ownership; rather it depicts the information provided directly from the producer and/or National Agricultural Imagery Program (NAIP) imagery. The producer accepts the data 'as is' and assumes all risks associated with its use. USDA-FSA assumes no responsibility for actual or consequential damage incurred as a result of any user's reliance on this data outside FSA Programs. Wetland identifiers do not represent the size, shape, or specific determination of the area. Refer to your original determination (CPA-026 and attached maps) for exact boundaries and determinations or contact USDA NRCS. USDA is an equal opportunity provider, employer, and lender.

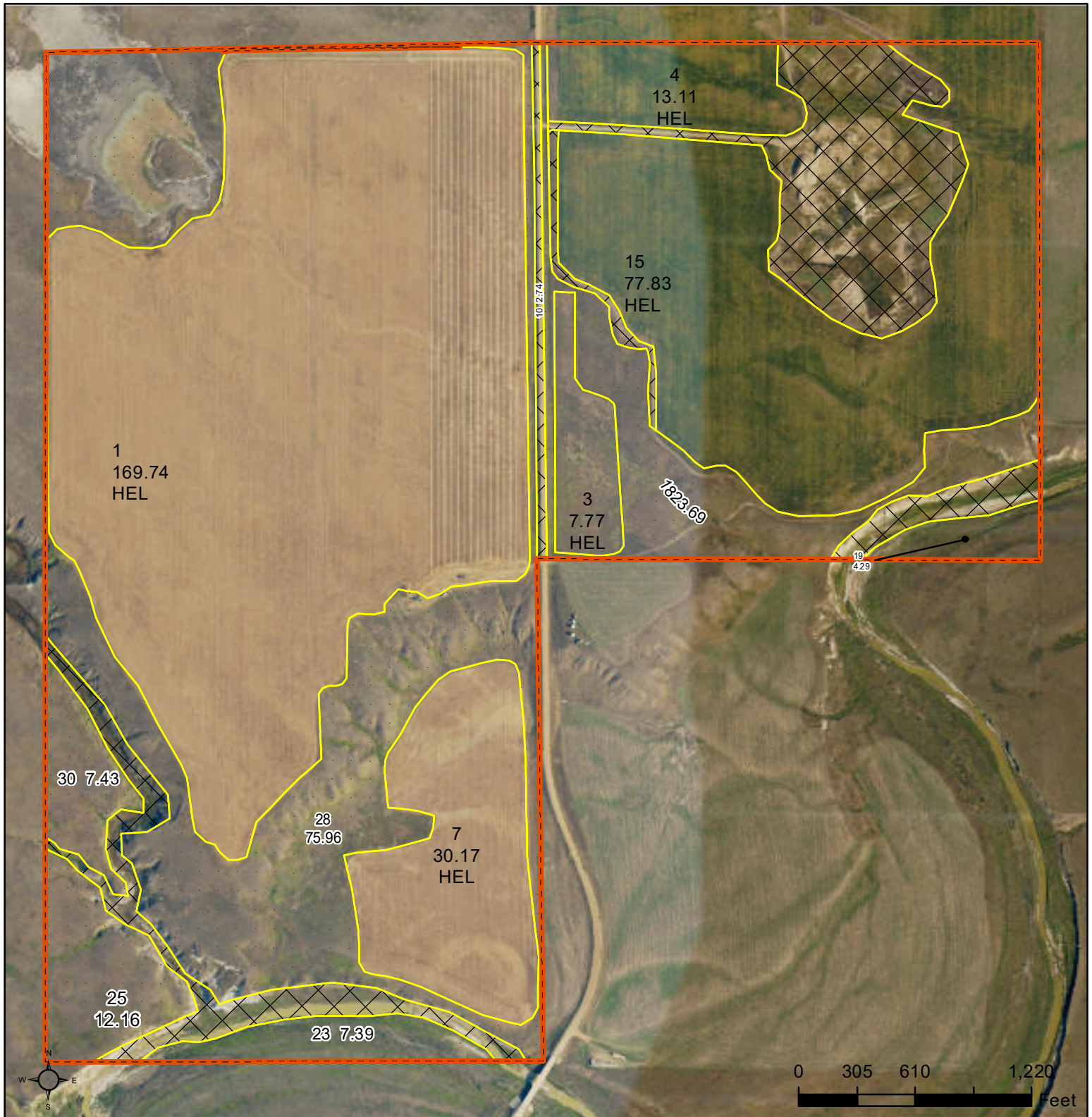




United States
Department of
Agriculture

Fallon County, Montana

Parcels 5 & 6



Common Land Unit

- Cropland
- Other Use
- Rangeland
- Tract Boundary

Wetland Determination Identifiers

- Restricted Use
- Limited Restrictions
- Exempt from Conservation Compliance Provisions

Tract Cropland Total: 298.62 acres

2026 Program Year

Map Created August 20, 2025
2021/2023 NAIP

Farm 1760

Tract 5315

31-129N-106W

United States Department of Agriculture (USDA) Farm Service Agency (FSA) maps are for FSA Program administration only. This map does not represent a legal survey or reflect actual ownership; rather it depicts the information provided directly from the producer and/or National Agricultural Imagery Program (NAIP) imagery. The producer accepts the data 'as is' and assumes all risks associated with its use. USDA-FSA assumes no responsibility for actual or consequential damage incurred as a result of any user's reliance on this data outside FSA Programs. Wetland identifiers do not represent the size, shape, or specific determination of the area. Refer to your original determination (CPA-026 and attached maps) for exact boundaries and determinations or contact USDA Natural Resources Conservation Service (NRCS).

MONTANA
FALLON

Form: FSA-156EZ

See Page 12 for non-discriminatory Statements.



United States Department of Agriculture
Farm Service Agency

Abbreviated 156 Farm Record

FARM : 1760

Prepared : 12/17/25 12:17 PM CST

Crop Year : 2026

Operator Name

CRP Contract Number(s) : None

Recon ID : None

Transferred From : None

ARCPLC G//F Eligibility : Eligible

Farm Land Data

Farmland	Cropland	DCP Cropland	WBP	EWP	WRP	GRP	Sugarcane	Farm Status	Number Of Tracts
5,122.25	2,709.31	2,709.31	0.00	0.00	0.00	0.00	0.0	Active	15
State Conservation	Other Conservation	Effective DCP Cropland		Double Cropped		CRP	MPL	DCP Ag.Rel. Activity	SOD
0.00	0.00	2,709.31		0.00		0.00	0.00	0.00	0.00

Crop Election Choice

ARC Individual	ARC County	Price Loss Coverage
None	None	WHEAT, OATS, CORN, PEAS

DCP Crop Data

Crop Name	Base Acres	CCC-505 CRP Reduction Acres	PLC Yield	HIP
Wheat	841.01	0.00	21	
Oats	22.17	0.00	39	
Corn	486.10	0.00	75	
Dry Peas	179.82	0.00	1041	
TOTAL	1,529.10	0.00		

NOTES

Tract Number : 2386

Description : SEC 18-3-62

FSA Physical Location : MONTANA/FALLON

ANSI Physical Location : MONTANA/FALLON

BIA Unit Range Number :

HEL Status : HEL field on tract.Conservation system being actively applied

Wetland Status : Wetland determinations not complete

WL Violations : None

Owners : U BAR C RANCH INC

Other Producers : None

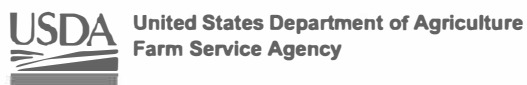
Recon ID : None

Parcel 2

Tract Land Data

Farm Land	Cropland	DCP Cropland	WBP	EWP	WRP	GRP	Sugarcane
119.15	117.80	117.80	0.00	0.00	0.00	0.00	0.0

MONTANA
FALLON
Form: FSA-156EZ



Abbreviated 156 Farm Record

FARM : 1760
Prepared : 12/17/25 12:17 PM CST
Crop Year : 2026

Tract 2386 Continued ...

State Conservation	Other Conservation	Effective DCP Cropland	Double Cropped	CRP	MPL	DCP Ag. Rel Activity	SOD
0.00	0.00	117.80	0.00	0.00	0.00	0.00	0.00

DCP Crop Data

Crop Name	Base Acres	CCC-505 CRP Reduction Acres	PLC Yield
Wheat	36.16	0.00	21
Oats	0.95	0.00	39
Corn	20.90	0.00	75
Dry Peas	7.73	0.00	1041
TOTAL	65.74	0.00	

NOTES

Tract Number : 2387

Description : SEC 19-3-62

FSA Physical Location : MONTANA/FALLON

ANSI Physical Location : MONTANA/FALLON

BIA Unit Range Number :

HEL Status : HEL field on tract.Conservation system being actively applied

Wetland Status : Wetland determinations not complete

WL Violations : None

Owners : U BAR C RANCH INC

Other Producers : None

Recon ID : None

Parcel 2

Tract Land Data

Farm Land	Cropland	DCP Cropland	WBP	EWP	WRP	GRP	Sugarcane
478.18	235.92	235.92	0.00	0.00	0.00	0.00	0.0
State Conservation	Other Conservation	Effective DCP Cropland	Double Cropped	CRP	MPL	DCP Ag. Rel Activity	SOD
0.00	0.00	235.92	0.00	0.00	0.00	0.00	0.00

DCP Crop Data

Crop Name	Base Acres	CCC-505 CRP Reduction Acres	PLC Yield
Wheat	72.41	0.00	21
Oats	1.91	0.00	39
Corn	41.85	0.00	75
Dry Peas	15.48	0.00	1041
TOTAL	131.65	0.00	



Abbreviated 156 Farm Record

Tract 2387 Continued ...

NOTES

Tract Number : 2391
Description : SEC 29-3-62
FSA Physical Location : MONTANA/FALLON
ANSI Physical Location : MONTANA/FALLON
BIA Unit Range Number :
HEL Status : HEL field on tract.Conservation system being actively applied
Wetland Status : Wetland determinations not complete
WL Violations : None
Owners : U BAR C RANCH INC
Other Producers : None
Recon ID : None

Parcel 2

Tract Land Data

Farm Land	Cropland	DCP Cropland	WBP	EWP	WRP	GRP	Sugarcane
76.03	32.66	32.66	0.00	0.00	0.00	0.00	0.0
State Conservation	Other Conservation	Effective DCP Cropland	Double Cropped	CRP	MPL	DCP Ag. Rel Activity	SOD
0.00	0.00	32.66	0.00	0.00	0.00	0.00	0.00

DCP Crop Data

Crop Name	Base Acres	CCC-505 CRP Reduction Acres	PLC Yield
Wheat	10.01	0.00	21
Oats	0.26	0.00	39
Corn	5.78	0.00	75
Dry Peas	2.14	0.00	1041

TOTAL 18.19 0.00

NOTES

Tract Number : 2394
Description : SEC 30-3-62
FSA Physical Location : MONTANA/FALLON
ANSI Physical Location : MONTANA/FALLON
BIA Unit Range Number :
HEL Status : HEL field on tract.Conservation system being actively applied
Wetland Status : Wetland determinations not complete
WL Violations : None
Owners : U BAR C RANCH INC

Parcel 2

MONTANA
FALLON
Form: FSA-156EZ



United States Department of Agriculture
Farm Service Agency

Abbreviated 156 Farm Record

FARM : 1760
Prepared : 12/17/25 12:17 PM CST
Crop Year : 2026

Tract 2394 Continued ...

Other Producers : None
Recon ID : None

Tract Land Data

Farm Land	Cropland	DCP Cropland	WBP	EWP	WRP	GRP	Sugarcane
317.36	110.62	110.62	0.00	0.00	0.00	0.00	0.0
State Conservation	Other Conservation	Effective DCP Cropland	Double Cropped	CRP	MPL	DCP Ag. Rel Activity	SOD
0.00	0.00	110.62	0.00	0.00	0.00	0.00	0.00

DCP Crop Data

Crop Name	Base Acres	CCC-505 CRP Reduction Acres	PLC Yield
Wheat	33.98	0.00	21
Oats	0.90	0.00	39
Corn	19.64	0.00	75
Dry Peas	7.26	0.00	1041
TOTAL	61.78	0.00	

NOTES

--

Tract Number : 2439

Description : SEC 13-3-61

FSA Physical Location : MONTANA/FALLON

ANSI Physical Location : MONTANA/FALLON

BIA Unit Range Number :

HEL Status : HEL field on tract.Conservation system being actively applied

Wetland Status : Wetland determinations not complete

WL Violations : None

Owners : U BAR C RANCH INC

Other Producers : None

Recon ID : None

Parcel 2

Tract Land Data

Farm Land	Cropland	DCP Cropland	WBP	EWP	WRP	GRP	Sugarcane
169.04	29.03	29.03	0.00	0.00	0.00	0.00	0.0
State Conservation	Other Conservation	Effective DCP Cropland	Double Cropped	CRP	MPL	DCP Ag. Rel Activity	SOD
0.00	0.00	29.03	0.00	0.00	0.00	0.00	0.00

DCP Crop Data

Crop Name	Base Acres	CCC-505 CRP Reduction Acres	PLC Yield

MONTANA
FALLON
Form: FSA-156EZ



United States Department of Agriculture
Farm Service Agency

Abbreviated 156 Farm Record

FARM : 1760
Prepared : 12/17/25 12:17 PM CST
Crop Year : 2026

Tract 2439 Continued ...

Wheat	8.91	0.00	21
Oats	0.24	0.00	39
Corn	5.15	0.00	75
Dry Peas	1.91	0.00	1041
TOTAL	16.21	0.00	

NOTES

Tract Number : 2472

Description : SEC 23-3-61
FSA Physical Location : MONTANA/FALLON
ANSI Physical Location : MONTANA/FALLON
BIA Unit Range Number :
HEL Status : HEL field on tract.Conservation system being actively applied
Wetland Status : Wetland determinations not complete
WL Violations : None
Owners : U BAR C RANCH INC
Other Producers : None
Recon ID : None

Parcel 1

Tract Land Data

Farm Land	Cropland	DCP Cropland	WBP	EWP	WRP	GRP	Sugarcane
201.48	157.51	157.51	0.00	0.00	0.00	0.00	0.0
State Conservation	Other Conservation	Effective DCP Cropland	Double Cropped	CRP	MPL	DCP Ag. Rel Activity	SOD
0.00	0.00	157.51	0.00	0.00	0.00	0.00	0.00

DCP Crop Data

Crop Name	Base Acres	CCC-505 CRP Reduction Acres	PLC Yield
Wheat	48.36	0.00	21
Oats	1.27	0.00	39
Corn	27.95	0.00	75
Dry Peas	10.34	0.00	1041
TOTAL	87.92	0.00	

NOTES

MONTANA
FALLON
Form: FSA-156EZ



United States Department of Agriculture
Farm Service Agency

Abbreviated 156 Farm Record

FARM : 1760
Prepared : 12/17/25 12:17 PM CST
Crop Year : 2026

Tract Number : 2473

Description : SEC 24-3-61
FSA Physical Location : MONTANA/FALLON
ANSI Physical Location : MONTANA/FALLON
BIA Unit Range Number :
HEL Status : HEL field on tract.Conservation system being actively applied
Wetland Status : Wetland determinations not complete
WL Violations : None
Owners : U BAR C RANCH INC
Other Producers : None
Recon ID : None

Parcel 2

Tract Land Data

Farm Land	Cropland	DCP Cropland	WBP	EWP	WRP	GRP	Sugarcane
642.39	315.41	315.41	0.00	0.00	0.00	0.00	0.0
State Conservation	Other Conservation	Effective DCP Cropland	Double Cropped	CRP	MPL	DCP Ag. Rel Activity	SOD
0.00	0.00	315.41	0.00	0.00	0.00	0.00	0.00

DCP Crop Data

Crop Name	Base Acres	CCC-505 CRP Reduction Acres	PLC Yield
Wheat	96.80	0.00	21
Oats	2.55	0.00	39
Com	55.95	0.00	75
Dry Peas	20.70	0.00	1041
TOTAL	176.00	0.00	

NOTES

--

Tract Number : 2474

Description : SEC 25-3-61
FSA Physical Location : MONTANA/FALLON
ANSI Physical Location : MONTANA/FALLON
BIA Unit Range Number :
HEL Status : HEL field on tract.Conservation system being actively applied
Wetland Status : Wetland determinations not complete
WL Violations : None
Owners : U BAR C RANCH INC
Other Producers : None
Recon ID : None

Parcels 1 & 2



Abbreviated 156 Farm Record

Tract Land Data

Tract 2474 Continued ...

Farm Land	Cropland	DCP Cropland	WBP	EWP	WRP	GRP	Sugarcane
514.71	428.88	428.88	0.00	0.00	0.00	0.00	0.0
State Conservation	Other Conservation	Effective DCP Cropland	Double Cropped	CRP	MPL	DCP Ag. Rel Activity	SOD
0.00	0.00	428.88	0.00	0.00	0.00	0.00	0.00

DCP Crop Data

Crop Name	Base Acres	CCC-505 CRP Reduction Acres	PLC Yield
Wheat	131.44	0.00	21
Oats	3.47	0.00	39
Corn	75.99	0.00	75
Dry Peas	28.11	0.00	1041
TOTAL	239.01	0.00	

NOTES

--

Tract Number : 2477

Description : SEC 26-3-61
FSA Physical Location : MONTANA/FALLON
ANSI Physical Location : MONTANA/FALLON
BIA Unit Range Number :
HEL Status : HEL field on tract.Conservation system being actively applied
Wetland Status : Wetland determinations not complete
WL Violations : None
Owners : U BAR C RANCH INC
Other Producers : None
Recon ID : None

Parcel 1

Tract Land Data

Farm Land	Cropland	DCP Cropland	WBP	EWP	WRP	GRP	Sugarcane
562.66	384.83	384.83	0.00	0.00	0.00	0.00	0.0
State Conservation	Other Conservation	Effective DCP Cropland	Double Cropped	CRP	MPL	DCP Ag. Rel Activity	SOD
0.00	0.00	384.83	0.00	0.00	0.00	0.00	0.00

DCP Crop Data

Crop Name	Base Acres	CCC-505 CRP Reduction Acres	PLC Yield
Wheat	118.08	0.00	21

MONTANA
FALLON
Form: FSA-156EZ



United States Department of Agriculture
Farm Service Agency

Abbreviated 156 Farm Record

FARM : 1760
Prepared : 12/17/25 12:17 PM CST
Crop Year : 2026

Tract 2477 Continued ...

Oats	3.11	0.00	39
Corn	68.25	0.00	75
Dry Peas	25.25	0.00	1041
TOTAL	214.69	0.00	

NOTES

Tract Number : 2504

Description : SEC 35-3-61

FSA Physical Location : MONTANA/FALLON

ANSI Physical Location : MONTANA/FALLON

BIA Unit Range Number :

HEL Status : HEL field on tract.Conservation system being actively applied

Wetland Status : Wetland determinations not complete

WL Violations : None

Owners : U BAR C RANCH INC

Other Producers : None

Recon ID : None

Parcel 1

Tract Land Data

Farm Land	Cropland	DCP Cropland	WBP	EWP	WRP	GRP	Sugarcane
483.80	200.36	200.36	0.00	0.00	0.00	0.00	0.0
State Conservation	Other Conservation	Effective DCP Cropland	Double Cropped	CRP	MPL	DCP Ag. Rel Activity	SOD
0.00	0.00	200.36	0.00	0.00	0.00	0.00	0.00

DCP Crop Data

Crop Name	Base Acres	CCC-505 CRP Reduction Acres	PLC Yield
Wheat	61.48	0.00	21
Oats	1.62	0.00	39
Corn	35.53	0.00	75
Dry Peas	13.14	0.00	1041
TOTAL	111.77	0.00	

NOTES

MONTANA
FALLON
Form: FSA-156EZ



United States Department of Agriculture
Farm Service Agency

Abbreviated 156 Farm Record

FARM : 1760
Prepared : 12/17/25 12:17 PM CST
Crop Year : 2026

Tract Number : 2508
Description : SEC 36-3-61
FSA Physical Location : MONTANA/FALLON
ANSI Physical Location : MONTANA/FALLON
BIA Unit Range Number :
HEL Status : HEL field on tract.Conservation system being actively applied
Wetland Status : Wetland determinations not complete
WL Violations : None
Owners : U BAR C RANCH INC
Other Producers : None
Recon ID : None

Parcel 2

Tract Land Data

Farm Land	Cropland	DCP Cropland	WBP	EWP	WRP	GRP	Sugarcane
159.58	82.82	82.82	0.00	0.00	0.00	0.00	0.0
State Conservation	Other Conservation	Effective DCP Cropland	Double Cropped	CRP	MPL	DCP Ag. Rel Activity	SOD
0.00	0.00	82.82	0.00	0.00	0.00	0.00	0.00

DCP Crop Data

Crop Name	Base Acres	CCC-505 CRP Reduction Acres	PLC Yield
Wheat	25.40	0.00	21
Oats	0.67	0.00	39
Corn	14.68	0.00	75
Dry Peas	5.43	0.00	1041
TOTAL	46.18	0.00	

NOTES

--

Tract Number : 2810
Description : SEC 26-129-107 BOWMAN CO. ND
FSA Physical Location : NORTH DAKOTA/BOWMAN
ANSI Physical Location : NORTH DAKOTA/BOWMAN
BIA Unit Range Number :
HEL Status : HEL field on tract.Conservation system being actively applied
Wetland Status : Wetland determinations not complete
WL Violations : None
Owners : U BAR C RANCH INC
Other Producers : None
Recon ID : None

Parcels 3 & 4



Abbreviated 156 Farm Record

Tract Land Data

Tract 2810 Continued ...

Farm Land	Cropland	DCP Cropland	WBP	EWP	WRP	GRP	Sugarcane
599.80	106.54	106.54	0.00	0.00	0.00	0.00	0.0
State Conservation	Other Conservation	Effective DCP Cropland	Double Cropped	CRP	MPL	DCP Ag. Rel Activity	SOD
0.00	0.00	106.54	0.00	0.00	0.00	0.00	0.00

DCP Crop Data

Crop Name	Base Acres	CCC-505 CRP Reduction Acres	PLC Yield
Wheat	32.80	0.00	21
Oats	0.86	0.00	39
Corn	18.96	0.00	75
Dry Peas	7.01	0.00	1041
TOTAL	59.63	0.00	

NOTES

Tract Number : 2817

Description : SEC 30-129-106 BOWMAN CO. ND

FSA Physical Location : NORTH DAKOTA/BOWMAN

ANSI Physical Location : NORTH DAKOTA/BOWMAN

BIA Unit Range Number :

HEL Status : HEL field on tract.Conservation system being actively applied

Wetland Status : Wetland determinations not complete

WL Violations : None

Owners : U BAR C RANCH INC

Other Producers : None

Recon ID : None

Parcels 4 & 6

Tract Land Data

Farm Land	Cropland	DCP Cropland	WBP	EWP	WRP	GRP	Sugarcane
240.29	133.56	133.56	0.00	0.00	0.00	0.00	0.0
State Conservation	Other Conservation	Effective DCP Cropland	Double Cropped	CRP	MPL	DCP Ag. Rel Activity	SOD
0.00	0.00	133.56	0.00	0.00	0.00	0.00	0.00

DCP Crop Data

Crop Name	Base Acres	CCC-505 CRP Reduction Acres	PLC Yield
Wheat	40.96	0.00	21

MONTANA
FALLON
Form: FSA-156EZ



United States Department of Agriculture
Farm Service Agency

Abbreviated 156 Farm Record

FARM : 1760
Prepared : 12/17/25 12:17 PM CST
Crop Year : 2026

Tract 2817 Continued ...

Oats	1.08	0.00	39
Corn	23.67	0.00	75
Dry Peas	8.76	0.00	1041
TOTAL	74.47	0.00	

NOTES

Tract Number : 4954

Description : SEC. 27-3-61
FSA Physical Location : MONTANA/FALLON
ANSI Physical Location : MONTANA/FALLON
BIA Unit Range Number :
HEL Status : HEL field on tract.Conservation system being actively applied
Wetland Status : Wetland determinations not complete
WL Violations : None
Owners : U BAR C RANCH INC
Other Producers : None
Recon ID : None

Parcel 1

Tract Land Data

Farm Land	Cropland	DCP Cropland	WBP	EWP	WRP	GRP	Sugarcane
78.59	74.75	74.75	0.00	0.00	0.00	0.00	0.0
State Conservation	Other Conservation	Effective DCP Cropland	Double Cropped	CRP	MPL	DCP Ag. Rel Activity	SOD
0.00	0.00	74.75	0.00	0.00	0.00	0.00	0.00

DCP Crop Data

Crop Name	Base Acres	CCC-505 CRP Reduction Acres	PLC Yield
Wheat	22.96	0.00	21
Oats	0.61	0.00	39
Corn	13.27	0.00	75
Dry Peas	4.91	0.00	1041
TOTAL	41.75	0.00	

NOTES

MONTANA
FALLON
Form: FSA-156EZ



United States Department of Agriculture
Farm Service Agency

Abbreviated 156 Farm Record

FARM : 1760
Prepared : 12/17/25 12:17 PM CST
Crop Year : 2026

Tract Number : 5315
Description : Sec 31-129-106 Bowman
FSA Physical Location : NORTH DAKOTA/BOWMAN
ANSI Physical Location : NORTH DAKOTA/BOWMAN
BIA Unit Range Number :
HEL Status : HEL field on tract.Conservation system being actively applied
Wetland Status : Wetland determinations not complete
WL Violations : None
Owners : U BAR C RANCH INC
Other Producers : None
Recon ID : 30-025-2009-31

Parcels 5 & 6

Tract Land Data

Farm Land	Cropland	DCP Cropland	WBP	EWP	WRP	GRP	Sugarcane
479.19	298.62	298.62	0.00	0.00	0.00	0.00	0.0
State Conservation	Other Conservation	Effective DCP Cropland	Double Cropped	CRP	MPL	DCP Ag. Rel Activity	SOD
0.00	0.00	298.62	0.00	0.00	0.00	0.00	0.00

DCP Crop Data

Crop Name	Base Acres	CCC-505 CRP Reduction Acres	PLC Yield
Wheat	101.26	0.00	21
Oats	2.67	0.00	39
Corn	58.53	0.00	75
Dry Peas	21.65	0.00	1041
TOTAL	184.11	0.00	

NOTES

In accordance with Federal civil rights law and U.S. Department of Agriculture (USDA) civil rights regulations and policies, the USDA, its Agencies, offices, and employees, and institutions participating in or administering USDA programs are prohibited from discriminating based on race, color, national origin, religion, sex, disability, age, marital status, family/parental status, income derived from a public assistance program, political beliefs, or reprisal or retaliation for prior civil rights activity, in any program or activity conducted or funded by USDA (not all bases apply to all programs). Remedies and complaint filing deadlines vary by program or incident.

Persons with disabilities who require alternative means of communication for program information (e.g., Braille, large print, audiotape, American Sign Language, etc.) should contact the responsible Agency or USDA's TARGET Center at (202) 720-2600 (voice and TTY) or contact USDA through the Federal Relay Service at (800) 877-8339. Additionally, program information may be made available in languages other than English.

To file a program discrimination complaint, complete the USDA Program Discrimination Complaint Form, AD-3027, found online at [How to File a Program Discrimination Complaint](#) and at any USDA office or write a letter addressed to USDA and provide in the letter all of the information requested in the form. To request a copy of the complaint form, call (866) 632-9992. Submit your completed form or letter to USDA by: (1) Mail: U.S. Department of Agriculture Office of the Assistant Secretary for Civil Rights, 1400 Independence Avenue, SW Washington, D.C. 20250-9410; (2) Fax: (202) 690-7442; or (3) Email: program.intake@usda.gov. USDA is an equal opportunity provider, employer, and lender.



Abbreviated 156 Farm Record

Operator Name : U BAR C RANCH INC
CRP Contract Number(s) : None
Recon ID : 38-011-2023-233
Transferred From : None
ARCPLC G//F Eligibility : Eligible

Farm Land Data									
Farmland	Cropland	DCP Cropland	WBP	EWP	WRP	GRP	Sugarcane	Farm Status	Number Of Tracts
119.28	115.89	115.89	0.00	0.00	0.00	0.00	0.0	Active	1
State Conservation	Other Conservation	Effective DCP Cropland		Double Cropped		CRP	MPL	DCP Ag.Rel. Activity	SOD
0.00	0.00	115.89		0.00		0.00	0.00	0.00	0.00

Crop Election Choice		
ARC Individual	ARC County	Price Loss Coverage
None	None	WHEAT, OATS, CORN, BARLY

DCP Crop Data				
Crop Name	Base Acres	CCC-505 CRP Reduction Acres	PLC Yield	HIP
Wheat	24.80	0.00	19	
Oats	23.90	0.00	36	
Corn	1.00	0.00	27	
Barley	10.90	0.00	28	
TOTAL	60.60	0.00		

NOTES

Tract Number : 7702	
Description	NESE; S2SE-23-129-107
FSA Physical Location	NORTH DAKOTA/BOWMAN
ANSI Physical Location	NORTH DAKOTA/BOWMAN
BIA Unit Range Number	
CRP Contract Number(s)	None
HEL Status	HEL field on tract.Conservation system being actively applied
Wetland Status	Tract does not contain a wetland
WL Violations	None
Owners	U BAR C RANCH INC
Other Producers	None
Recon ID	None

Parcel 3



Abbreviated 156 Farm Record

Tract Land Data

Tract 7702 Continued ...

Farm Land	Cropland	DCP Cropland	WBP	EWP	WRP	GRP	Sugarcane
119.28	115.89	115.89	0.00	0.00	0.00	0.00	0.0
State Conservation	Other Conservation	Effective DCP Cropland	Double Cropped	CRP	MPL	DCP Ag. Rel Activity	SOD
0.00	0.00	115.89	0.00	0.00	0.00	0.00	0.00

DCP Crop Data

Crop Name	Base Acres	CCC-505 CRP Reduction Acres	PLC Yield
Wheat	24.80	0.00	19
Oats	23.90	0.00	36
Corn	1.00	0.00	27
Barley	10.90	0.00	28
TOTAL	60.60	0.00	

NOTES

In accordance with Federal civil rights law and U.S. Department of Agriculture (USDA) civil rights regulations and policies, the USDA, its Agencies, offices, and employees, and institutions participating in or administering USDA programs are prohibited from discriminating based on race, color, national origin, religion, sex, disability, age, marital status, family/parental status, income derived from a public assistance program, political beliefs, or reprisal or retaliation for prior civil rights activity, in any program or activity conducted or funded by USDA (not all bases apply to all programs). Remedies and complaint filing deadlines vary by program or incident.

Persons with disabilities who require alternative means of communication for program information (e.g., Braille, large print, audiotape, American Sign Language, etc.) should contact the State or Local Agency that administers the program or contact USDA through the Telecommunications Relay Service at 711 (voice and TTY). Additionally, program information may be made available in languages other than English.

To file a program discrimination complaint, complete the USDA Program Discrimination Complaint Form, AD-3027, found online at [How to File a Program Discrimination Complaint](#) and at any USDA office or write a letter addressed to USDA and provide in the letter all of the information requested in the form. To request a copy of the complaint form, call (866) 632-9992. Submit your completed form or letter to USDA by: (1) Mail: U.S. Department of Agriculture Office of the Assistant Secretary for Civil Rights, 1400 Independence Avenue, SW Washington, D.C. 20250-9410; (2) Fax: (202) 690-7442; or (3) Email: program.intake@usda.gov. USDA is an equal opportunity provider, employer, and lender.

Parcel 3

NORTH DAKOTA

BOWMAN

Form: FSA-156EZ

See Page 6 for non-discriminatory Statements.

United States Department of Agriculture
Farm Service Agency

Abbreviated 156 Farm Record

FARM : 5283

Prepared : 1/15/26 3:31 PM CST

Crop Year : 2026

Operator Name : TODD A MECCAGE

CRP Contract Number(s) : None

Recon ID : 38-011-2023-19

Transferred From : None

ARCPLC G/I/F Eligibility : Eligible

Farm Land Data

Farmland	Cropland	DCP Cropland	WBP	EWP	WRP	GRP	Sugarcane	Farm Status	Number Of Tracts
1,637.45	9.99	9.99	0.00	0.00	0.00	0.00	0.0	Active	8
State Conservation	Other Conservation	Effective DCP Cropland		Double Cropped		CRP	MPL	DCP Ag.Rel. Activity	SOD
0.00	0.00	9.99		0.00		0.00	0.00	0.00	0.00

Crop Election Choice

ARC Individual	ARC County	Price Loss Coverage
None	None	None

DCP Crop Data

Crop Name	Base Acres	CCC-505 CRP Reduction Acres	PLC Yield	HIP
-----------	------------	-----------------------------	-----------	-----

NOTES

Tract Number : 7954

Description : E2NE SEC 27-129-107

FSA Physical Location : NORTH DAKOTA/BOWMAN

ANSI Physical Location : NORTH DAKOTA/BOWMAN

BIA Unit Range Number :

CRP Contract Number(s) : None

HEL Status : HEL determinations not completed for all fields on the tract

Wetland Status : Tract does not contain a wetland

WL Violations : None

Owners : U BAR C RANCH INC

Other Producers : None

Recon ID : None

Parcel 3

Tract Land Data

Farm Land	Cropland	DCP Cropland	WBP	EWP	WRP	GRP	Sugarcane
79.50	0.00	0.00	0.00	0.00	0.00	0.00	0.0
State Conservation	Other Conservation	Effective DCP Cropland	Double Cropped	CRP	MPL	DCP Ag. Rel Activity	SOD
0.00	0.00	0.00	0.00	0.00	0.00	0.00	0.00



Abbreviated 156 Farm Record

Tract 7954 Continued ...

DCP Crop Data

Crop Name	Base Acres	CCC-505 CRP Reduction Acres	PLC Yield
-----------	------------	-----------------------------	-----------

NOTES

--

Tract Number : 7955

Description : SESE-SEC 27-129-107
FSA Physical Location : NORTH DAKOTA/BOWMAN
ANSI Physical Location : NORTH DAKOTA/BOWMAN
BIA Unit Range Number :
CRP Contract Number(s) : None
HEL Status : HEL determinations not completed for all fields on the tract
Wetland Status : Tract does not contain a wetland
WL Violations : None
Owners : U BAR C RANCH INC
Other Producers : None
Recon ID : None

Parcel 3

Tract Land Data

Farm Land	Cropland	DCP Cropland	WBP	EWP	WRP	GRP	Sugarcane
40.17	0.00	0.00	0.00	0.00	0.00	0.00	0.0
State Conservation	Other Conservation	Effective DCP Cropland	Double Cropped	CRP	MPL	DCP Ag. Rel Activity	SOD
0.00	0.00	0.00	0.00	0.00	0.00	0.00	0.00

DCP Crop Data

Crop Name	Base Acres	CCC-505 CRP Reduction Acres	PLC Yield
-----------	------------	-----------------------------	-----------

NOTES

--

Tract Number : 7956

Description : N2SW;SESW;S2NW;S2NE;SE-19-129-106
FSA Physical Location : NORTH DAKOTA/BOWMAN
ANSI Physical Location : NORTH DAKOTA/BOWMAN
BIA Unit Range Number :
CRP Contract Number(s) : None
HEL Status : HEL determinations not completed for all fields on the tract
Wetland Status : Tract does not contain a wetland
WL Violations : None
Owners : U BAR C RANCH INC

Parcel 4



Abbreviated 156 Farm Record

Tract 7956 Continued ...

Other Producers : None
Recon ID : None

Parcel 4

Tract Land Data

Farm Land	Cropland	DCP Cropland	WBP	EWP	WRP	GRP	Sugarcane
408.77	0.00	0.00	0.00	0.00	0.00	0.00	0.0
State Conservation	Other Conservation	Effective DCP Cropland	Double Cropped	CRP	MPL	DCP Ag. Rel Activity	SOD
0.00	0.00	0.00	0.00	0.00	0.00	0.00	0.00

DCP Crop Data

Crop Name	Base Acres	CCC-505 CRP Reduction Acres	PLC Yield
-----------	------------	-----------------------------	-----------

NOTES

Tract Number : 7958

Description : NENW;NWNE;SEC30-129-106;SEC 25-129-107
FSA Physical Location : NORTH DAKOTA/BOWMAN
ANSI Physical Location : NORTH DAKOTA/BOWMAN
BIA Unit Range Number :
CRP Contract Number(s) : None
HEL Status : HEL determinations not completed for all fields on the tract
Wetland Status : Tract does not contain a wetland
WL Violations : None
Owners : U BAR C RANCH INC
Other Producers : None
Recon ID : None

Parcel 4

Tract Land Data

Farm Land	Cropland	DCP Cropland	WBP	EWP	WRP	GRP	Sugarcane
713.17	0.00	0.00	0.00	0.00	0.00	0.00	0.0
State Conservation	Other Conservation	Effective DCP Cropland	Double Cropped	CRP	MPL	DCP Ag. Rel Activity	SOD
0.00	0.00	0.00	0.00	0.00	0.00	0.00	0.00

DCP Crop Data

Crop Name	Base Acres	CCC-505 CRP Reduction Acres	PLC Yield
-----------	------------	-----------------------------	-----------

NOTES



Abbreviated 156 Farm Record

Tract Number : 7962

Description : S2SW,NWSW 30-129-106
FSA Physical Location : NORTH DAKOTA/BOWMAN
ANSI Physical Location : NORTH DAKOTA/BOWMAN
BIA Unit Range Number :
CRP Contract Number(s) : None
HEL Status : HEL determinations not completed for all fields on the tract
Wetland Status : Tract does not contain a wetland
WL Violations : None
Owners : U BAR C RANCH INC
Other Producers : None
Recon ID : None

Parcel 4

Tract Land Data

Farm Land	Cropland	DCP Cropland	WBP	EWP	WRP	GRP	Sugarcane
114.13	0.00	0.00	0.00	0.00	0.00	0.00	0.0
State Conservation	Other Conservation	Effective DCP Cropland	Double Cropped	CRP	MPL	DCP Ag. Rel Activity	SOD
0.00	0.00	0.00	0.00	0.00	0.00	0.00	0.00

DCP Crop Data

Crop Name	Base Acres	CCC-505 CRP Reduction Acres	PLC Yield

NOTES

Tract Number : 10646

Description : 44.88ac FL NE 24-129-107
FSA Physical Location : NORTH DAKOTA/BOWMAN
ANSI Physical Location : NORTH DAKOTA/BOWMAN
BIA Unit Range Number :
CRP Contract Number(s) : None
HEL Status : HEL determinations not completed for all fields on the tract
Wetland Status : Tract does not contain a wetland
WL Violations : None
Owners : U BAR C RANCH INC
Other Producers : None
Recon ID : 38-011-2016-7

Parcel 4

Tract Land Data

Farm Land	Cropland	DCP Cropland	WBP	EWP	WRP	GRP	Sugarcane
44.88	9.99	9.99	0.00	0.00	0.00	0.00	0.0



Abbreviated 156 Farm Record

Tract 10646 Continued ...

State Conservation	Other Conservation	Effective DCP Cropland	Double Cropped	CRP	MPL	DCP Ag. Rel Activity	SOD
0.00	0.00	9.99	0.00	0.00	0.00	0.00	0.00

DCP Crop Data

Crop Name	Base Acres	CCC-505 CRP Reduction Acres	PLC Yield
-----------	------------	-----------------------------	-----------

NOTES

Tract Number : 10647

Description : S2SW 24-129-107
FSA Physical Location : NORTH DAKOTA/BOWMAN
ANSI Physical Location : NORTH DAKOTA/BOWMAN
BIA Unit Range Number :
CRP Contract Number(s) : None
HEL Status : HEL determinations not completed for all fields on the tract
Wetland Status : Tract does not contain a wetland
WL Violations : None
Owners : U BAR C RANCH INC
Other Producers : None
Recon ID : 38-011-2016-7

Parcel 4

Tract Land Data

Farm Land	Cropland	DCP Cropland	WBP	EWP	WRP	GRP	Sugarcane
77.35	0.00	0.00	0.00	0.00	0.00	0.00	0.0
State Conservation	Other Conservation	Effective DCP Cropland	Double Cropped	CRP	MPL	DCP Ag. Rel Activity	SOD
0.00	0.00	0.00	0.00	0.00	0.00	0.00	0.00

DCP Crop Data

Crop Name	Base Acres	CCC-505 CRP Reduction Acres	PLC Yield
-----------	------------	-----------------------------	-----------

NOTES

NORTH DAKOTA
BOWMAN

Form: FSA-156EZ



United States Department of Agriculture
Farm Service Agency

Abbreviated 156 Farm Record

FARM : 5283

Prepared : 1/15/26 3:31 PM CST

Crop Year : 2026

Tract Number : 11812

Description : Lots 2, 3, 4 of 27-129-107

FSA Physical Location : NORTH DAKOTA/BOWMAN

ANSI Physical Location : NORTH DAKOTA/BOWMAN

BIA Unit Range Number :

CRP Contract Number(s) : None

HEL Status : HEL determinations not completed for all fields on the tract

Wetland Status : Wetland determinations not complete

WL Violations : None

Owners : U BAR C RANCH INC

Other Producers : None

Recon ID : None

Parcel 3

Tract Land Data

Farm Land	Cropland	DCP Cropland	WBP	EWP	WRP	GRP	Sugarcane
159.48	0.00	0.00	0.00	0.00	0.00	0.00	0.0
State Conservation	Other Conservation	Effective DCP Cropland	Double Cropped	CRP	MPL	DCP Ag. Rel Activity	SOD
0.00	0.00	0.00	0.00	0.00	0.00	0.00	0.00

DCP Crop Data

Crop Name	Base Acres	CCC-505 CRP Reduction Acres	PLC Yield
-----------	------------	-----------------------------	-----------

NOTES

In accordance with Federal civil rights law and U.S. Department of Agriculture (USDA) civil rights regulations and policies, the USDA, its Agencies, offices, and employees, and institutions participating in or administering USDA programs are prohibited from discriminating based on race, color, national origin, religion, sex, disability, age, marital status, family/parental status, income derived from a public assistance program, political beliefs, or reprisal or retaliation for prior civil rights activity, in any program or activity conducted or funded by USDA (not all bases apply to all programs). Remedies and complaint filing deadlines vary by program or incident.

Persons with disabilities who require alternative means of communication for program information (e.g., Braille, large print, audiotope, American Sign Language, etc.) should contact the State or Local Agency that administers the program or contact USDA through the Telecommunications Relay Service at 711 (voice and TTY). Additionally, program information may be made available in languages other than English.

To file a program discrimination complaint, complete the USDA Program Discrimination Complaint Form, AD-3027, found online at [How to File a Program Discrimination Complaint](#) and at any USDA office or write a letter addressed to USDA and provide in the letter all of the information requested in the form. To request a copy of the complaint form, call (866) 632-9992. Submit your completed form or letter to USDA by: (1) Mail: U.S. Department of Agriculture Office of the Assistant Secretary for Civil Rights, 1400 Independence Avenue, SW Washington, D.C. 20250-9410; (2) Fax: (202) 690-7442; or (3) Email: program.intake@usda.gov. USDA is an equal opportunity provider, employer, and lender.