

# Ramsey County, ND

## Farm

**S10 T157N R62W**

Phy. Cnty: Ramsey

**2025 Program Year**

2023 imagery  
Map Created 04/08/2025



### Unless Otherwise Noted:

- Barley = Spring for Grain
- Canola = Spring for Processing
- Corn = Yellow for Grain
- Flax = Common for Grain
- Oats = Spring for Grain
- Soybeans = Common for Grain
- Sunflowers = Oil for Grain
- Wheat = Spring for Grain
- All fields are non-irrigated
- Shares are 100% to operator

Tract Boundary

Noncropland

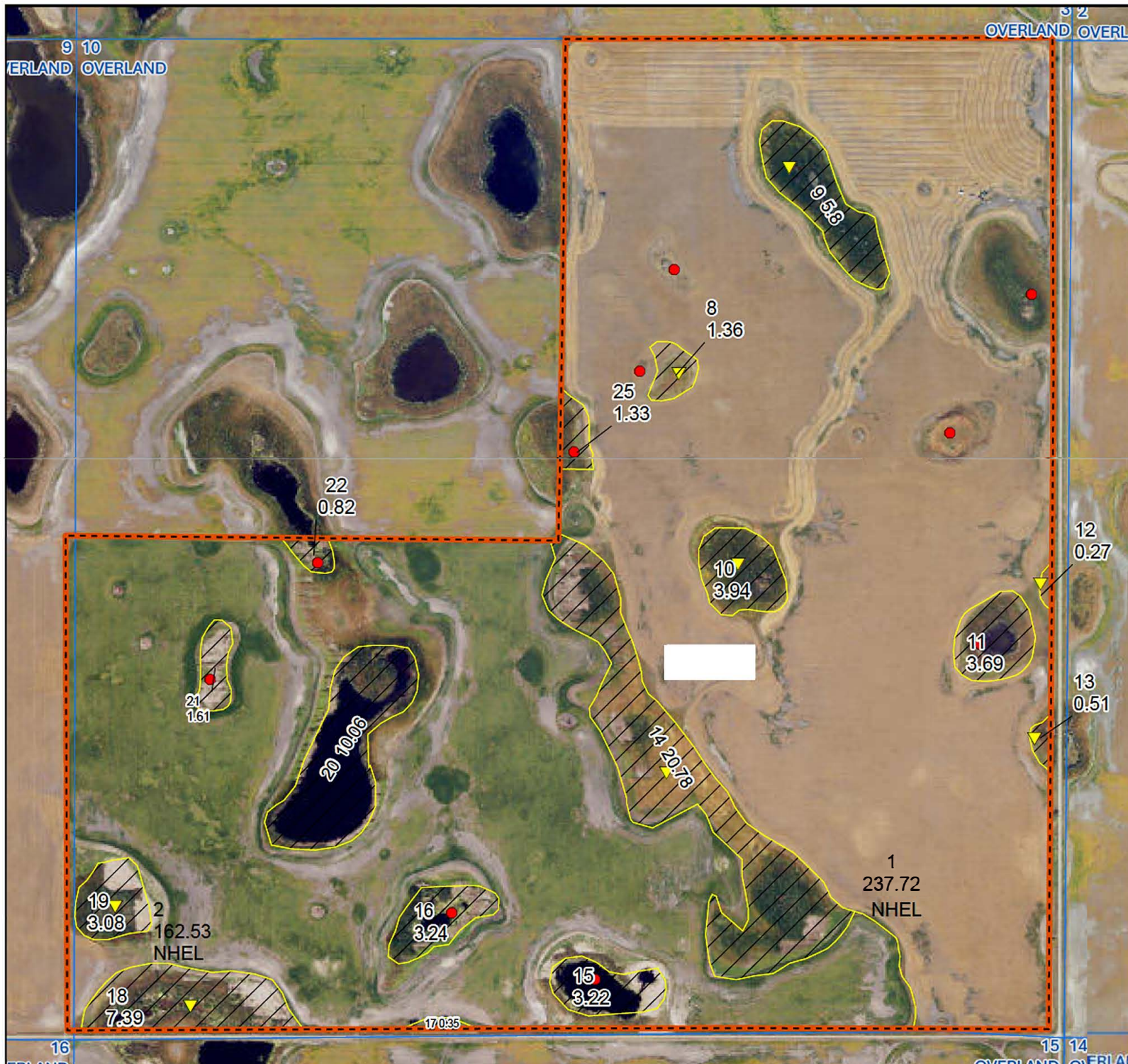
Cropland

PLSS

### Wetland Determination Identifiers

- Restricted Use
- Limited Restrictions
- Exempt from
- Conservation

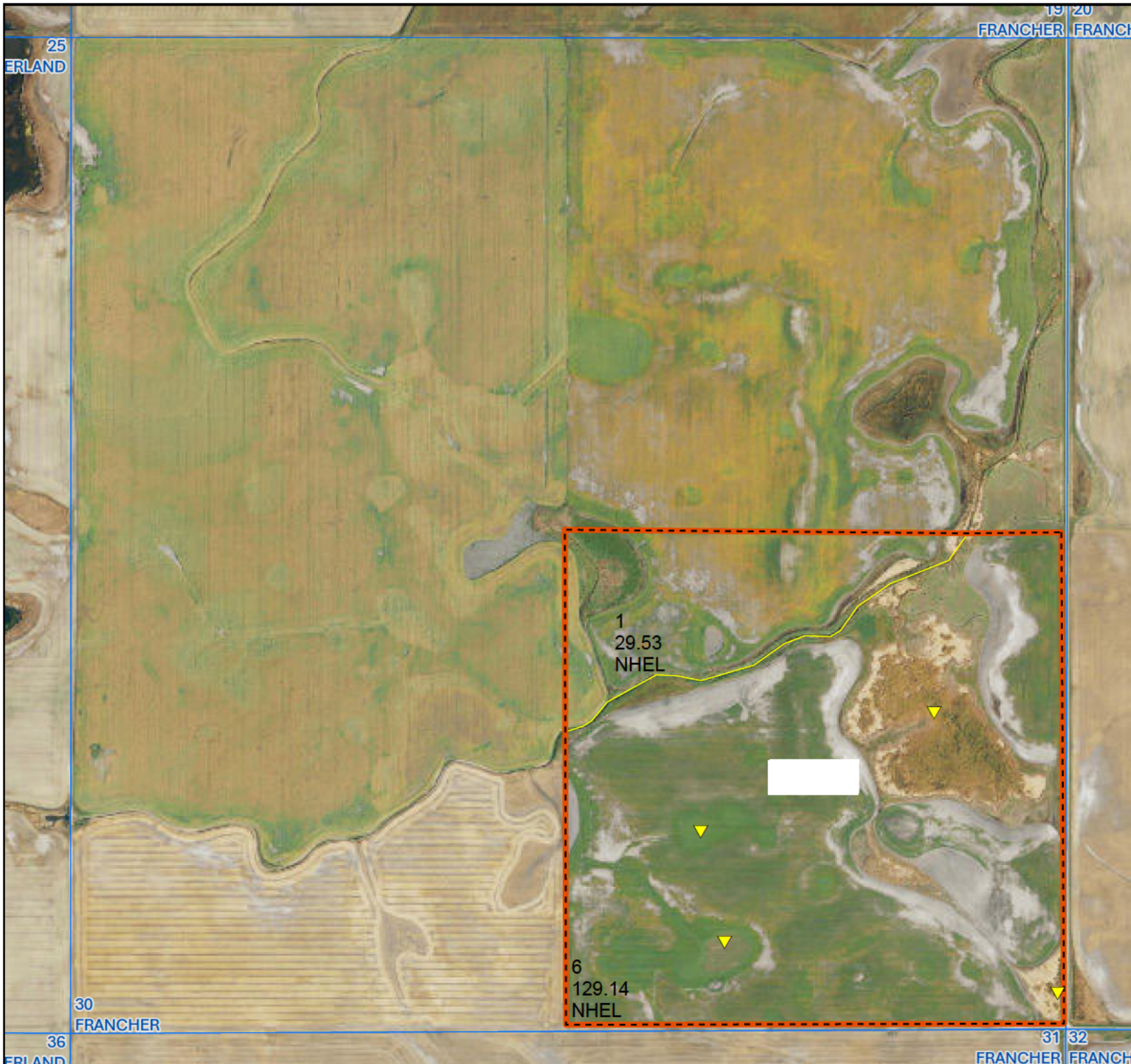
Compliance Provisions



United States Department of Agriculture (USDA) Farm Service Agency (FSA) maps are for FSA Program administration only. This map does not represent a legal survey or reflect actual ownership; rather it depicts the information provided directly from the producer and/or National Agricultural Imagery Program (NAIP) imagery. The producer accepts the data 'as is' and assumes all risks associated with its use. USDA-FSA assumes no responsibility for actual or consequential damage incurred as a result of any user's reliance on this data outside FSA Programs. Wetland identifiers do not represent the size, shape, or specific determination of the area. Refer to your original determination (CPA-026 and attached maps) for exact boundaries and determinations or contact USDA NRCS. USDA is an equal opportunity provider, employer, and lender.







## Ramsey County, ND

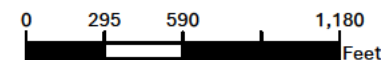
### Farm

**S30 T157N R61W**

Phy. Cnty: Ramsey

**2025 Program Year**

2023 imagery  
Map Created 04/08/2025



#### Unless Otherwise Noted:

- Barley = Spring for Grain
- Canola = Spring for Processing
- Corn = Yellow for Grain
- Flax = Common for Grain
- Oats = Spring for Grain
- Soybeans = Common for Grain
- Sunflowers = Oil for Grain
- Wheat = Spring for Grain
- All fields are non-irrigated
- Shares are 100% to operator

Tract Boundary

Cropland

PLSS

#### Wetland Determination Identifiers

- Restricted Use
  - Limited Restrictions
  - Exempt from
  - Conservation
- Compliance Provisions





# Ramsey County, ND

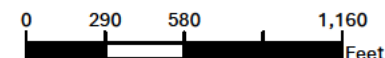
## Farm

**S32 T157N R61W**

Phy. Cnty: Ramsey

**2025 Program Year**

2023 imagery  
Map Created 04/08/2025



### Unless Otherwise Noted:

- Barley = Spring for Grain
- Canola = Spring for Processing
- Corn = Yellow for Grain
- Flax = Common for Grain
- Oats = Spring for Grain
- Soybeans = Common for Grain
- Sunflowers = Oil for Grain
- Wheat = Spring for Grain
- All fields are non-irrigated
- Shares are 100% to operator

Tract Boundary

Noncropland

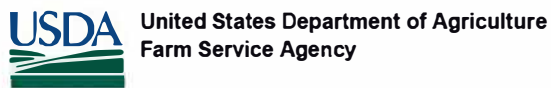
Cropland

PLSS

### Wetland Determination Identifiers

- Restricted Use
- Limited Restrictions
- Exempt from
- Conservation
- Compliance Provisions

NORTH DAKOTA  
RAMSEY  
Form: FSA-156EZ



Abbreviated 156 Farm Record

**FARM :**  
**Prepared :** 12/29/25 12:40 PM CST  
**Crop Year :** 2026

Tract Number :

Description :

Tract Land Data

Farm Land	Cropland	DCP Cropland	WBP	EWP	WRP	GRP	Sugarcane
State Conservation	Other Conservation	Effective DCP Cropland	Double Cropped	CRP	MPL	DCP Ag. Rel Activity	SOD

DCP Crop Data

Crop Name	Base Acres	CCC-505 CRP Reduction Acres	PLC Yield

NOTES

Tract Number :

Description : S-NE10-157-62  
FSA Physical Location : NORTH DAKOTA/RAMSEY  
ANSI Physical Location : NORTH DAKOTA/RAMSEY  
BIA Unit Range Number :  
CRP Contract Number(s) : None  
HEL Status : NHEL: No agricultural commodity planted on undetermined fields  
Wetland Status : Tract contains a wetland or farmed wetland  
WL Violations : None  
Owners :  
Other Producers :



## Abbreviated 156 Farm Record

FARM :

Prepared : 12/29/25 12:40 PM CST

Crop Year : 2026

Tract Continued ...

Recon ID : 38-071-2021-1

## Tract Land Data

Farm Land	Cropland	DCP Cropland	WBP	EWP	WRP	GRP	Sugarcane
467.70	400.25	400.25	0.00	0.00	0.00	0.00	0.0
State Conservation	Other Conservation	Effective DCP Cropland	Double Cropped	CRP	MPL	DCP Ag. Rel Activity	SOD
0.00	0.00	400.25	0.00	0.00	0.00	0.00	0.00

## DCP Crop Data

Crop Name	Base Acres	CCC-505 CRP Reduction Acres	PLC Yield
Wheat	132.29	0.00	42
Corn	83.40	0.00	92
Soybeans	58.47	0.00	25
Barley	21.39	0.00	73
Canola	85.81	0.00	1493

**TOTAL** **381.36** **0.00**

## NOTES

In accordance with Federal civil rights law and U.S. Department of Agriculture (USDA) civil rights regulations and policies, the USDA, its Agencies, offices, and employees, and institutions participating in or administering USDA programs are prohibited from discriminating based on race, color, national origin, religion, sex, disability, age, marital status, family/parental status, income derived from a public assistance program, political beliefs, or reprisal or retaliation for prior civil rights activity, in any program or activity conducted or funded by USDA (not all bases apply to all programs). Remedies and complaint filing deadlines vary by program or incident.

Persons with disabilities who require alternative means of communication for program information (e.g., Braille, large print, audiotape, American Sign Language, etc.) should contact the State or Local Agency that administers the program or contact USDA through the Telecommunications Relay Service at 711 (voice and TTY). Additionally, program information may be made available in languages other than English.

To file a program discrimination complaint, complete the USDA Program Discrimination Complaint Form, AD-3027, found online at [How to File a Program Discrimination Complaint](#) and at any USDA office or write a letter addressed to USDA and provide in the letter all of the information requested in the form. To request a copy of the complaint form, call (866) 632-9992. Submit your completed form or letter to USDA by: (1) Mail: U.S. Department of Agriculture Office of the Assistant Secretary for Civil Rights, 1400 Independence Avenue, SW Washington, D.C. 20250-9410; (2) Fax: (202) 690-7442; or (3) Email: [program.intake@usda.gov](mailto:program.intake@usda.gov). USDA is an equal opportunity provider, employer, and lender.

NORTH DAKOTA

RAMSEY

Form: FSA-156EZ

See Page 3 for non-discriminatory Statements

United States Department of Agriculture  
Farm Service Agency

## Abbreviated 156 Farm Record

FARM :

Prepared : 12/29/25 12:41 PM CST

Crop Year : 2026

Operator Name :  
CRP Contract Number(s) : None  
Recon ID : 38-071-2019-16  
Transferred From : None  
ARCPLC G//F Eligibility : Eligible

## Farm Land Data

Farmland	Cropland	DCP Cropland	WBP	EWP	WRP	GRP	Sugarcane	Farm Status	Number Of Tracts
317.78	297.89	297.89	0.00	0.00	0.00	0.00	0.0	Active	2
State Conservation	Other Conservation	Effective DCP Cropland	Double Cropped			CRP	MPL	DCP Ag.Rel. Activity	SOD
0.00	0.00	297.89	0.00			0.00	0.00	0.00	0.00

## Crop Election Choice

ARC Individual	ARC County	Price Loss Coverage
None	WHEAT, CORN, SOYBN, BARLY, CANOL, PEAS	None

## DCP Crop Data

Crop Name	Base Acres	CCC-505 CRP Reduction Acres	PLC Yield	HIP
Wheat	90.14	0.00	44	
Corn	87.89	0.00	100	
Soybeans	81.66	0.00	26	
Barley	8.68	0.00	63	
Canola	3.19	0.00	1467	
Dry Peas	20.91	0.00	2513	

**TOTAL** 292.47 0.00

## NOTES

Tract Number : 

Description : GIS SE30-157-61  
FSA Physical Location : NORTH DAKOTA/RAMSEY  
ANSI Physical Location : NORTH DAKOTA/RAMSEY  
BIA Unit Range Number :  
CRP Contract Number(s) : None  
HEL Status : NHEL: No agricultural commodity planted on undetermined fields  
Wetland Status : Tract does not contain a wetland  
WL Violations : None  
Owners :  
Other Producers : None  
Recon ID : None



**Abbreviated 156 Farm Record**

**Tract Land Data**

Tract      Continued ...

Farm Land	Cropland	DCP Cropland	WBP	EWP	WRP	GRP	Sugarcane
158.67	158.67	158.67	0.00	0.00	0.00	0.00	0.0
State Conservation	Other Conservation	Effective DCP Cropland	Double Cropped	CRP	MPL	DCP Ag. Rel Activity	SOD
0.00	0.00	158.67	0.00	0.00	0.00	0.00	0.00

**DCP Crop Data**

Crop Name	Base Acres	CCC-505 CRP Reduction Acres	PLC Yield
Wheat	48.01	0.00	44
Corn	46.81	0.00	100
Soybeans	43.49	0.00	26
Barley	4.62	0.00	63
Canola	1.70	0.00	1467
Dry Peas	11.14	0.00	2513
<b>TOTAL</b>	<b>155.77</b>	<b>0.00</b>	

**NOTES**

--

Tract Number :

Description : NE32-157-61  
FSA Physical Location : NORTH DAKOTA/RAMSEY  
ANSI Physical Location : NORTH DAKOTA/RAMSEY  
BIA Unit Range Number :  
CRP Contract Number(s) : None  
HEL Status : NHEL: No agricultural commodity planted on undetermined fields  
Wetland Status : Tract contains a wetland or farmed wetland  
WL Violations : None  
Owners :  
Other Producers : None  
Recon ID : 38-071-2019-15

**Tract Land Data**

Farm Land	Cropland	DCP Cropland	WBP	EWP	WRP	GRP	Sugarcane
159.11	139.22	139.22	0.00	0.00	0.00	0.00	0.0
State Conservation	Other Conservation	Effective DCP Cropland	Double Cropped	CRP	MPL	DCP Ag. Rel Activity	SOD
0.00	0.00	139.22	0.00	0.00	0.00	0.00	0.00



## Abbreviated 156 Farm Record

## DCP Crop Data

Tract Continued ...

Crop Name	Base Acres	CCC-505 CRP Reduction Acres	PLC Yield
Wheat	42.13	0.00	44
Corn	41.08	0.00	100
Soybeans	38.17	0.00	26
Barley	4.06	0.00	63
Canola	1.49	0.00	1467
Dry Peas	9.77	0.00	2513
<b>TOTAL</b>	<b>136.70</b>	<b>0.00</b>	

## NOTES

In accordance with Federal civil rights law and U.S. Department of Agriculture (USDA) civil rights regulations and policies, the USDA, its Agencies, offices, and employees, and institutions participating in or administering USDA programs are prohibited from discriminating based on race, color, national origin, religion, sex, disability, age, marital status, family/parental status, income derived from a public assistance program, political beliefs, or reprisal or retaliation for prior civil rights activity, in any program or activity conducted or funded by USDA (not all bases apply to all programs). Remedies and complaint filing deadlines vary by program or incident.

Persons with disabilities who require alternative means of communication for program information (e.g., Braille, large print, audiotope, American Sign Language, etc.) should contact the State or Local Agency that administers the program or contact USDA through the Telecommunications Relay Service at 711 (voice and TTY). Additionally, program information may be made available in languages other than English.

To file a program discrimination complaint, complete the USDA Program Discrimination Complaint Form, AD-3027, found online at [How to File a Program Discrimination Complaint](#) and at any USDA office or write a letter addressed to USDA and provide in the letter all of the information requested in the form. To request a copy of the complaint form, call (866) 632-9992. Submit your completed form or letter to USDA by: (1) Mail: U.S. Department of Agriculture Office of the Assistant Secretary for Civil Rights, 1400 Independence Avenue, SW Washington, D.C. 20250-9410; (2) Fax: (202) 690-7442; or (3) Email: [program.intake@usda.gov](mailto:program.intake@usda.gov). USDA is an equal opportunity provider, employer, and lender.