

Grant County, ND

Farm 1245

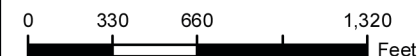
S2 T135N R86W

Phy Cnty: Grant

2025 Program Year

2023 Imagery

Map Created February 04, 2025



Unless Otherwise Noted:

Barley = Spring for Grain
Canola = Spring for Processing
Corn = Yellow for Grain
Flax = Common for Grain
Oats = Spring for Grain
Soybeans = Common for Grain
Sunflowers = Oil for Grain
Wheat = Spring for Grain
All fields are non-irrigated
Shares are 100% to operator

Tract Boundary

Non-Cropland

Cropland

PLSS

Wetland Determination Identifiers

- Restricted Use
- Limited Restrictions
- Exempt from Conservation Compliance Provisions



United States Department of Agriculture (USDA) Farm Service Agency (FSA) maps are for FSA Program administration only. This map does not represent a legal survey or reflect actual ownership; rather it depicts the information provided directly from the producer and/or National Agricultural Imagery Program (NAIP) imagery. The producer accepts the data 'as is' and assumes all risks associated with its use. USDA-FSA assumes no responsibility for actual or consequential damage incurred as a result of any user's reliance on this data outside FSA Programs. Wetland identifiers do not represent the size, shape, or specific determination of the area. Refer to your original determination (CPA-026 and attached maps) for exact boundaries and determinations or contact USDA Natural Resources Conservation Service (NRCS).





Grant County, ND

Farm 1245

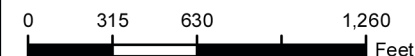
S10 T135N R86W

Phy Cnty: Grant

2025 Program Year

2023 Imagery

Map Created February 04, 2025



Unless Otherwise Noted:

- Barley = Spring for Grain
- Canola = Spring for Processing
- Corn = Yellow for Grain
- Flax = Common for Grain
- Oats = Spring for Grain
- Soybeans = Common for Grain
- Sunflowers = Oil for Grain
- Wheat = Spring for Grain
- All fields are non-irrigated
- Shares are 100% to operator

- Tract Boundary
- Non-Cropland
- Cropland
- PLSS

Wetland Determination Identifiers

- Restricted Use
- Limited Restrictions
- Exempt from Conservation Compliance Provisions

Grant County, ND

Farm 1245

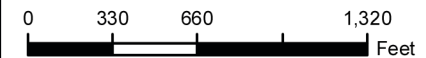
S11 T135N R86W

Phy Cnty: Grant

2025 Program Year

2023 Imagery

Map Created February 04, 2025



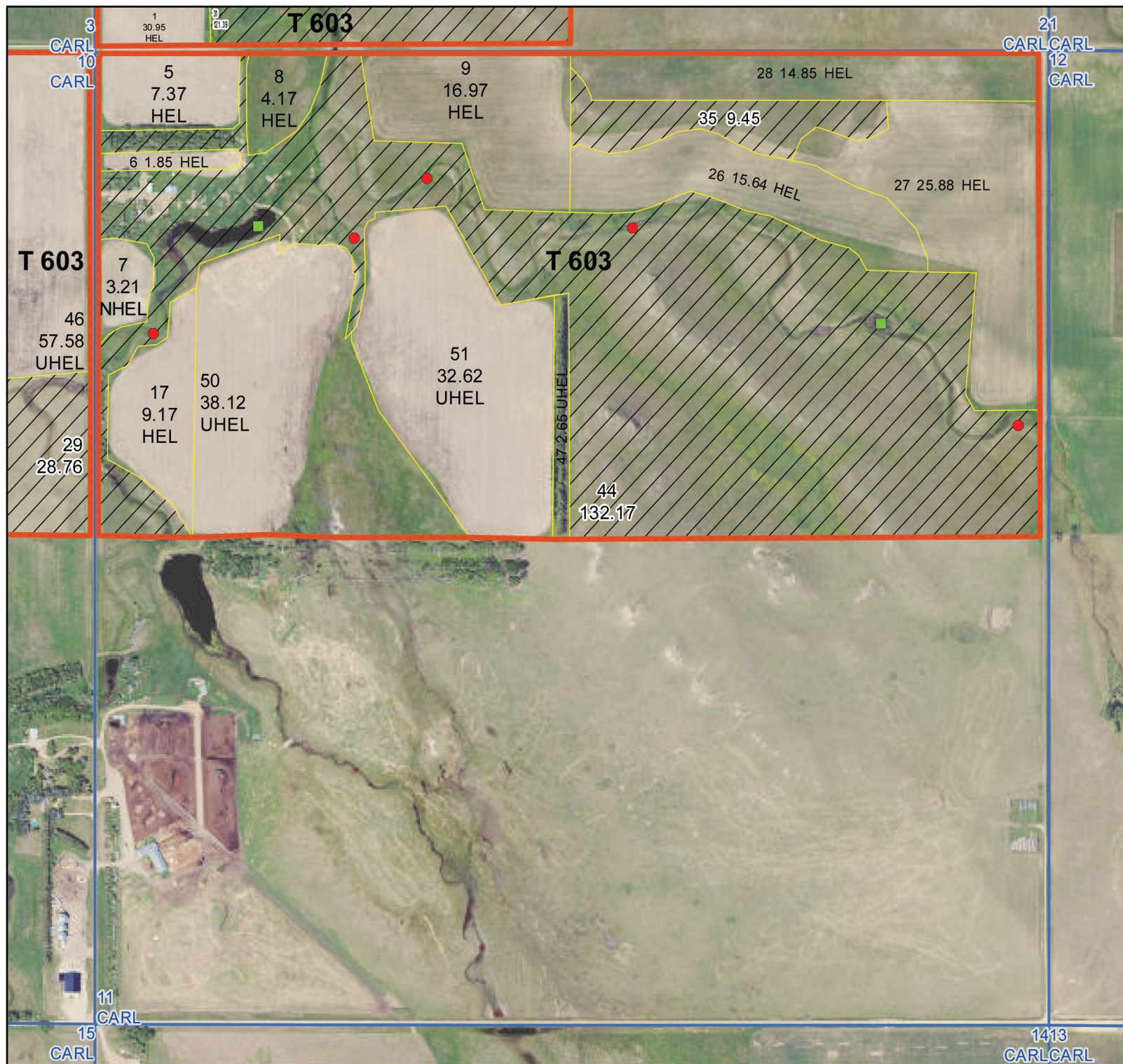
Unless Otherwise Noted:

- Barley = Spring for Grain
- Canola = Spring for Processing
- Corn = Yellow for Grain
- Flax = Common for Grain
- Oats = Spring for Grain
- Soybeans = Common for Grain
- Sunflowers = Oil for Grain
- Wheat = Spring for Grain
- All fields are non-irrigated
- Shares are 100% to operator

- Tract Boundary
- Non-Cropland
- Cropland
- PLSS

Wetland Determination Identifiers

- Restricted Use
- Limited Restrictions
- Exempt from Conservation Compliance Provisions



NORTH DAKOTA
GRANT

Form: FSA-156EZ



United States Department of Agriculture
Farm Service Agency

FARM : 1245

Prepared : 12/30/25 11:23 AM CST

Crop Year : 2026

Abbreviated 156 Farm Record

Tract Number : 603

Description : 105/ SW 2,NE 10,N2 11 135 86
FSA Physical Location : NORTH DAKOTA/GRANT
ANSI Physical Location : NORTH DAKOTA/GRANT
BIA Unit Range Number :
CRP Contract Number(s) : None
HEL Status : HEL field on tract.Conservation system being actively applied
Wetland Status : Tract contains a wetland or farmed wetland
WL Violations : None
Owners :
Other Producers : None
Recon ID : None

Tract Land Data

Farm Land	Cropland	DCP Cropland	WBP	EWP	WRP	GRP	Sugarcane
625.84	293.00	293.00	0.00	0.00	0.00	0.00	0.0
State Conservation	Other Conservation	Effective DCP Cropland	Double Cropped	CRP	MPL	DCP Ag. Rel Activity	SOD
0.00	0.00	293.00	0.00	0.00	0.00	0.00	0.00

DCP Crop Data

Crop Name	Base Acres	CCC-505 CRP Reduction Acres	PLC Yield
Wheat	6.18	0.00	25
Oats	5.79	0.00	66
Corn	5.79	0.00	74
Barley	11.58	0.00	39
TOTAL	29.34	0.00	

NOTES