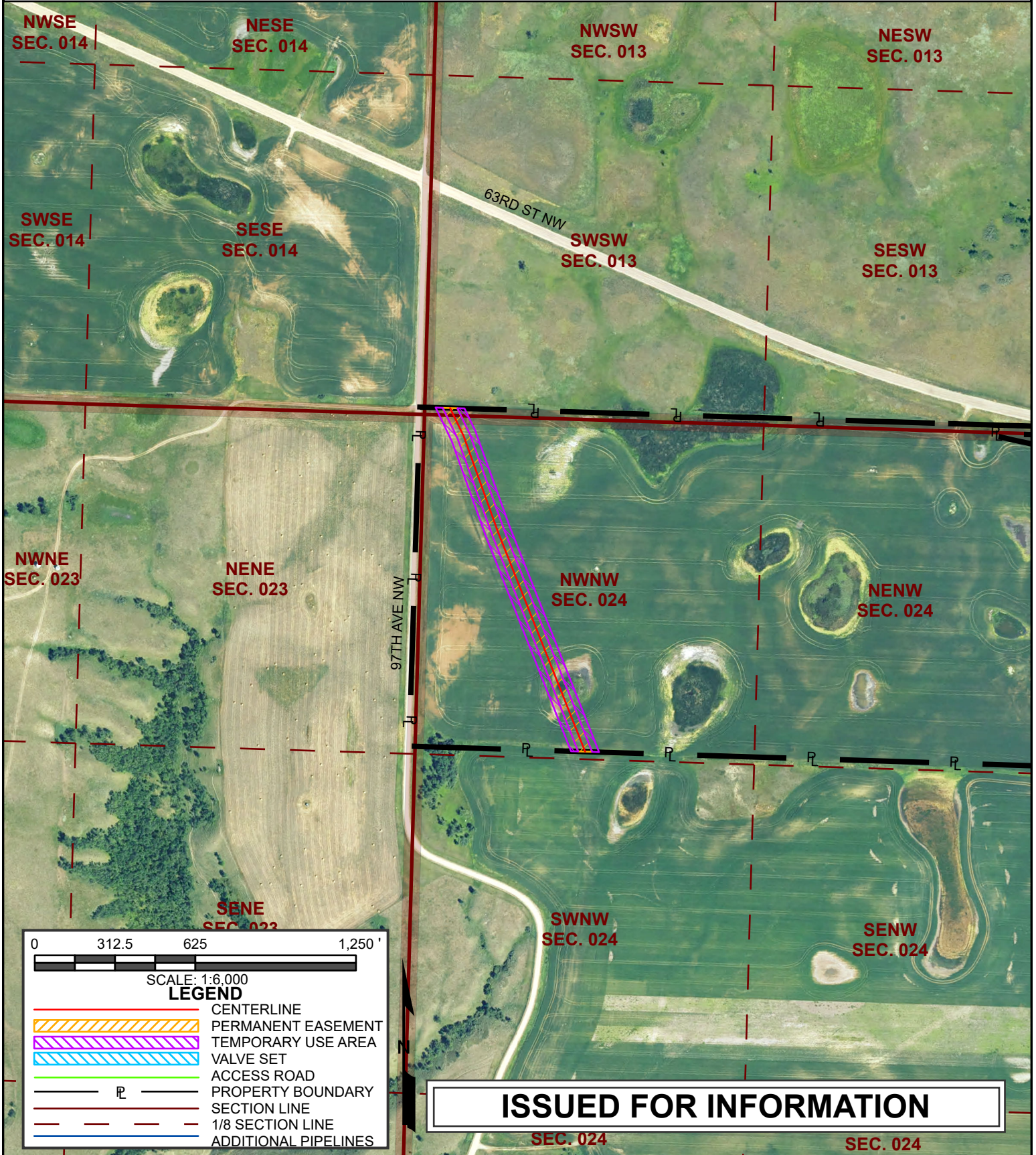


# PRELIMINARY EXHIBIT "A"

SECTION 24, T156N, R94W, 5TH P.M.,  
MOUNTRAIL COUNTY, NORTH DAKOTA

SURFACE OWNERSHIP	ASSESSOR'S PARCEL NUMBER
DENNIS & REBECCA EDWARDS TRUSTEES	210013000

EST. FEET / RODS	PERMANENT/TEMPORARY
1,437 FT / 87.1 RODS	1.65 ACRES / 1.65 ACRES



- 1) ALL GAS, WATER AND UTILITY LINES SHOULD BE LOCATED PRIOR TO ANY EXCAVATING, DIGGING OR TRENCHING ANYWHERE ON OR NEAR THE SITE.
- 2) HESS ASSUMES NO RESPONSIBILITY FOR THE SPECIFIC LOCATION OF ANY BURIED GAS, WATER, OR UTILITY LINES THAT MAY BE PRESENT ON OR NEAR THIS SITE, NOR IS ANY LIABILITY ASSUMED FOR ANY LEGAL ACTION WHICH RESULTS FROMM A DISCOVERY OF A GAS, WATER, OR UTILITY LINE IN ADDITION TO OR IN A DIFFERENT LOCATION THAN SHOW ON THIS PLAN.
- 3) COORDINATE SYSTEM BASED ON NORTH DAKOTA STATE PLANE NORTH ZONE, US SURVEY FT.
- 4) AERIAL PHOTO FROM NAIP 2024.
- 5) THIS EXHIBIT IS FOR GRAPHICAL REPRESENTATION ONLY AND NOT ACCURATE BY SURVEY STANDARDS.

				<b>HESS</b>		<b>HESS CORPORATION</b> EXPLORATION & PRODUCTION		NORTH DAKOTA MIDSTREAM EAST NESSON WOP Number	
				PROPOSED PIPELINE		EXHIBIT A			
				DENNIS & REBECCA EDWARDS TRUSTEES					
1	8/11/2025	ISSUED FOR INFORMATION	MEW						
REV	DATE	DESCRIPTION	DRAWN BY	CHKD BY	APPRVD BY	DRAWN BY: MEW	DESIGN BY:	CHECKED BY:	APPRVD BY:
		REVISIONS				DATE: 8/11/2025	SCALE: 1:6,000	HESS DRAWING No.	
						SIZE: A	DRAWING No.	REV 1	