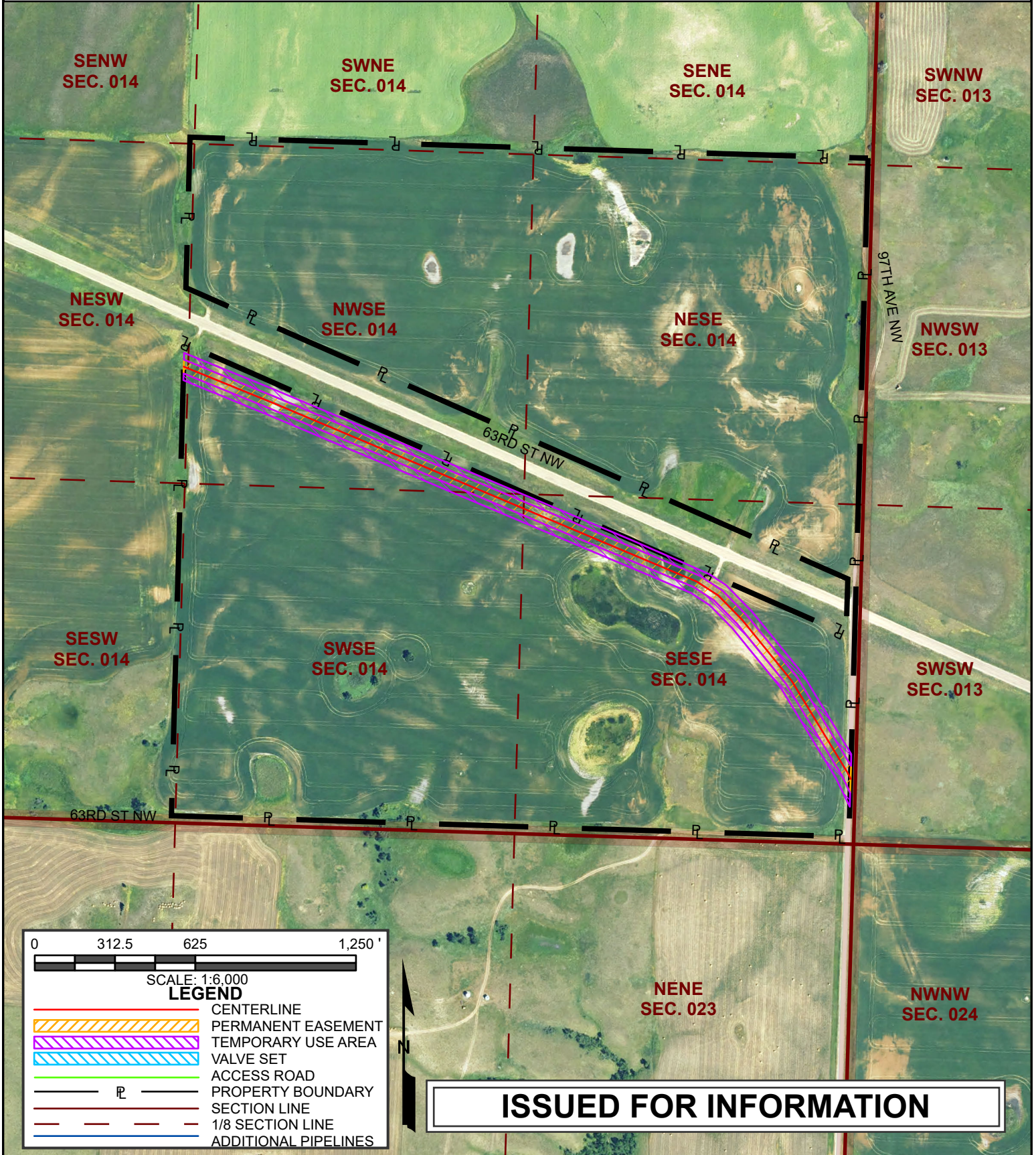


# PRELIMINARY EXHIBIT "A"

SECTION 14, T156N, R94W, 5TH P.M.,  
MOUNTRAIL COUNTY, NORTH DAKOTA

SURFACE OWNERSHIP	ASSESSOR'S PARCEL NUMBER
DENNIS & REBECCA EDWARDS TRUSTEES	210007500

EST. FEET / RODS	PERMANENT/TEMPORARY
3,148 FT / 190.8 RODS	3.61 ACRES / 3.6 ACRES



**ISSUED FOR INFORMATION**

- 1) ALL GAS, WATER AND UTILITY LINES SHOULD BE LOCATED PRIOR TO ANY EXCAVATING, DIGGING OR TRENCHING ANYWHERE ON OR NEAR THE SITE.
- 2) HESS ASSUMES NO RESPONSIBILITY FOR THE SPECIFIC LOCATION OF ANY BURIED GAS, WATER, OR UTILITY LINES THAT MAY BE PRESENT ON OR NEAR THIS SITE, NOR IS ANY LIABILITY ASSUMED FOR ANY LEGAL ACTION WHICH RESULTS FROM A DISCOVERY OF A GAS, WATER, OR UTILITY LINE IN ADDITION TO OR IN A DIFFERENT LOCATION THAN SHOW ON THIS PLAN.
- 3) COORDINATE SYSTEM BASED ON NORTH DAKOTA STATE PLANE NORTH ZONE, US SURVEY FT.
- 4) AERIAL PHOTO FROM NAIP 2024.
- 5) THIS EXHIBIT IS FOR GRAPHICAL REPRESENTATION ONLY AND NOT ACCURATE BY SURVEY STANDARDS.

				<b>HESS</b>		<b>HESS CORPORATION</b> EXPLORATION & PRODUCTION		NORTH DAKOTA MIDSTREAM			
								WOP Number			
						PROPOSED PIPELINE		EXHIBIT A			
								DENNIS & REBECCA EDWARDS TRUSTEES			
1	8/11/2025	ISSUED FOR INFORMATION	MEW			DRAWN BY:	DESIGN BY:	CHECKED BY:	APPRVD BY:	DATE:	SCALE:
REV	DATE	DESCRIPTION	DRAWN BY	CHKD BY	APPRVD BY	MEW				8/11/2025	1:6,000
REVISIONS						SIZE	DRAWING No.	HESS DRAWING No.		REV	
						A				1	