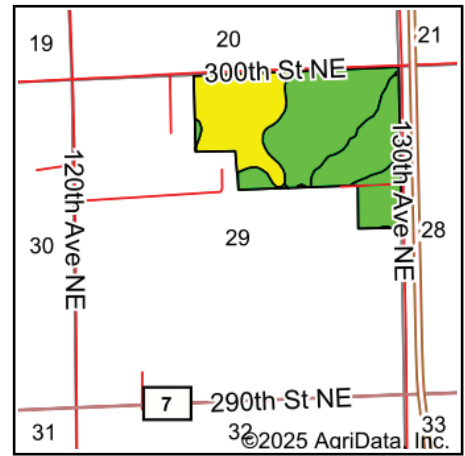
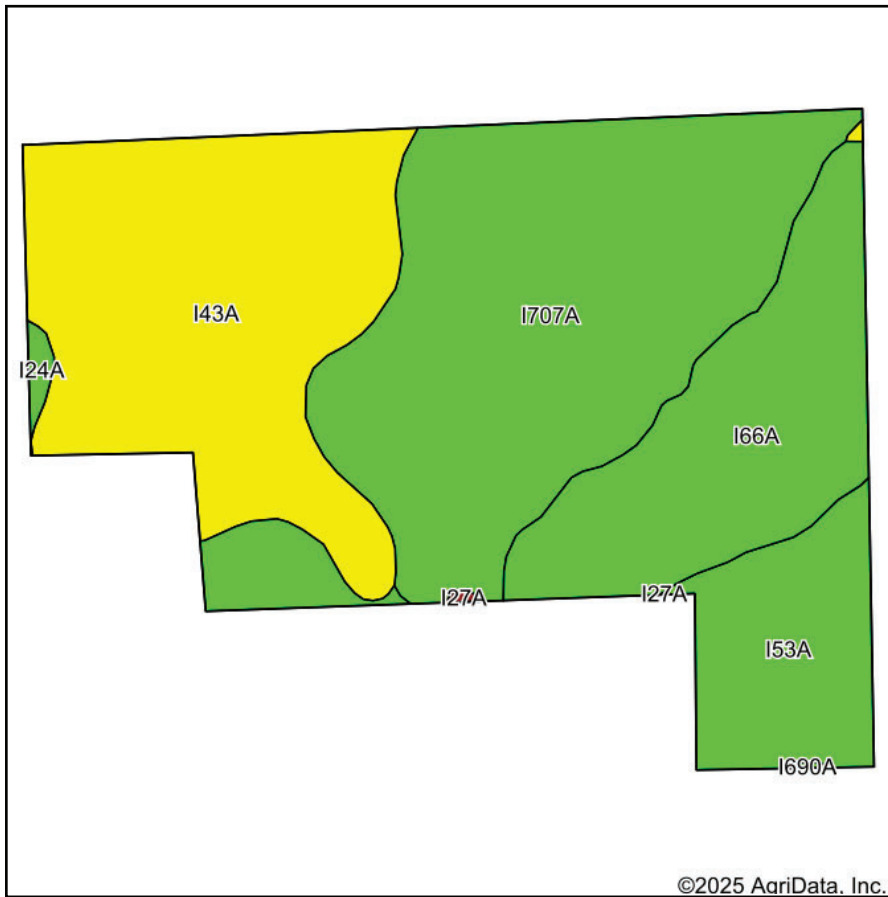


Soils Map



State: **Minnesota**
 County: **Marshall**
 Location: **29-156N-43W**
 Township: **Holt**
 Acres: **142.5**
 Date: **10/22/2025**

Pifer's
 AUCTION & REALTY
 and Land Management

Maps Provided By:

 CUSTOMIZED ONLINE MAPPING
 © AgriData, Inc. 2023 www.AgriDataInc.com



Area Symbol: MN089, Soil Area Version: 25

Code	Soil Description	Acres	Percent of field	PI Legend	Non-Irr Class	Productivity Index	*n NCCPI Soybeans
I707A	Roliss-Vallers loams, 0 to 1 percent slopes	53.94	37.8%		IIw	91	70
I43A	Mavie fine sandy loam, 0 to 1 percent slopes	43.11	30.3%		IIIw	75	38
I66A	Vallers loam, 0 to 2 percent slopes	29.95	21.0%		IIw	90	66
I53A	Roliss loam, 0 to 2 percent slopes	14.65	10.3%		IIw	92	73
I24A	Grimstad fine sandy loam, 0 to 2 percent slopes, aspen parkland	0.68	0.5%		IIs	88	51
I27A	Hamre muck, 0 to 1 percent slopes	0.11	0.1%		IVw	15	39
I690A	Kittson loam, wet, 0 to 2 percent slopes	0.06	0.0%		IIc	100	64
Weighted Average					2.30	86	*n 59.7

*n: The aggregation method is "Weighted Average using all components"