



Benson County, ND

Farm 847

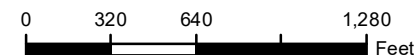
S6 T152N R70W

Phy Cnty: Benson

2025 Program Year

2023 Imagery

Map Created February 03, 2025



Unless Otherwise Noted:

- Barley = Spring for Grain
- Canola = Spring for Processing
- Corn = Yellow for Grain
- Flax = Common for Grain
- Oats = Spring for Grain
- Soybeans = Common for Grain
- Sunflowers = Oil for Grain
- Wheat = Spring for Grain
- All fields are non-irrigated
- Shares are 100% to operator

Program

- WRP
- Tract Boundary
- Non-Cropland
- Cropland
- PLSS

Wetland Determination Identifiers

- Restricted Use
- Limited Restrictions
- Exempt from Conservation Compliance Provisions

United States Department of Agriculture (USDA) Farm Service Agency (FSA) maps are for FSA Program administration only. This map does not represent a legal survey or reflect actual ownership; rather it depicts the information provided directly from the producer and/or National Agricultural Imagery Program (NAIP) imagery. The producer accepts the data 'as is' and assumes all risks associated with its use. USDA-FSA assumes no responsibility for actual or consequential damage incurred as a result of any user's reliance on this data outside FSA Programs. Wetland identifiers do not represent the size, shape, or specific determination of the area. Refer to your original determination (CPA-026 and attached maps) for exact boundaries and determinations or contact USDA Natural Resources Conservation Service (NRCS).



Benson County, ND

Farm 847

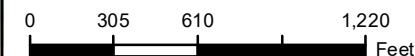
S7 T152N R70W

Phy Cnty: Benson

2025 Program Year

2023 Imagery

Map Created February 03, 2025



Unless Otherwise Noted:

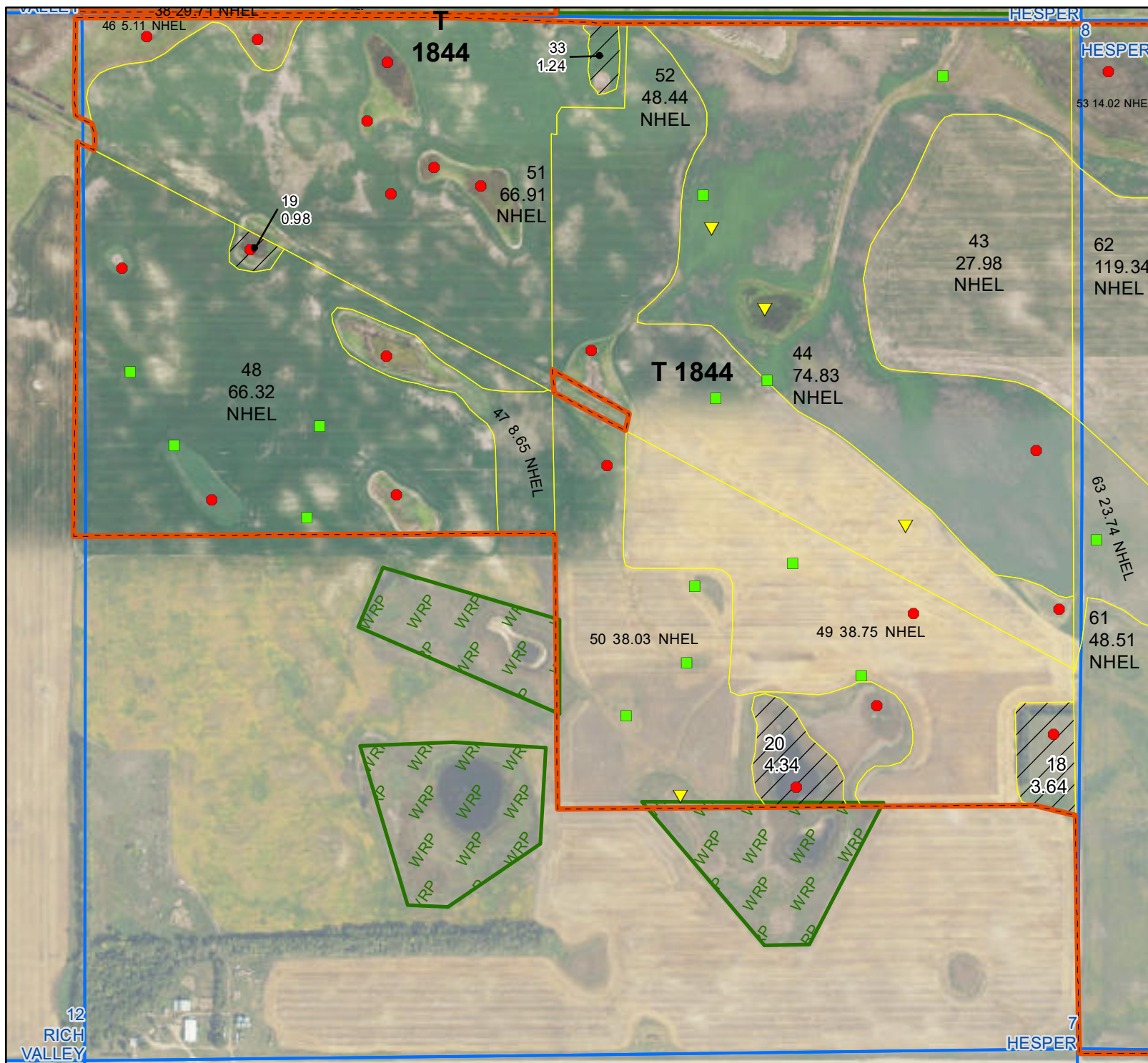
- Barley = Spring for Grain
- Canola = Spring for Processing
- Corn = Yellow for Grain
- Flax = Common for Grain
- Oats = Spring for Grain
- Soybeans = Common for Grain
- Sunflowers = Oil for Grain
- Wheat = Spring for Grain
- All fields are non-irrigated
- Shares are 100% to operator

Program

- WRP
- Tract Boundary
- Non-Cropland
- Cropland
- PLSS

Wetland Determination Identifiers

- Restricted Use
- Limited Restrictions
- Exempt from Conservation Compliance Provisions



Benson County, ND

Farm 847

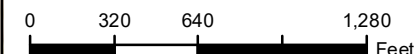
S8 T152N R70W

Phy Cnty: Benson

2025 Program Year

2023 Imagery

Map Created February 03, 2025



Unless Otherwise Noted:

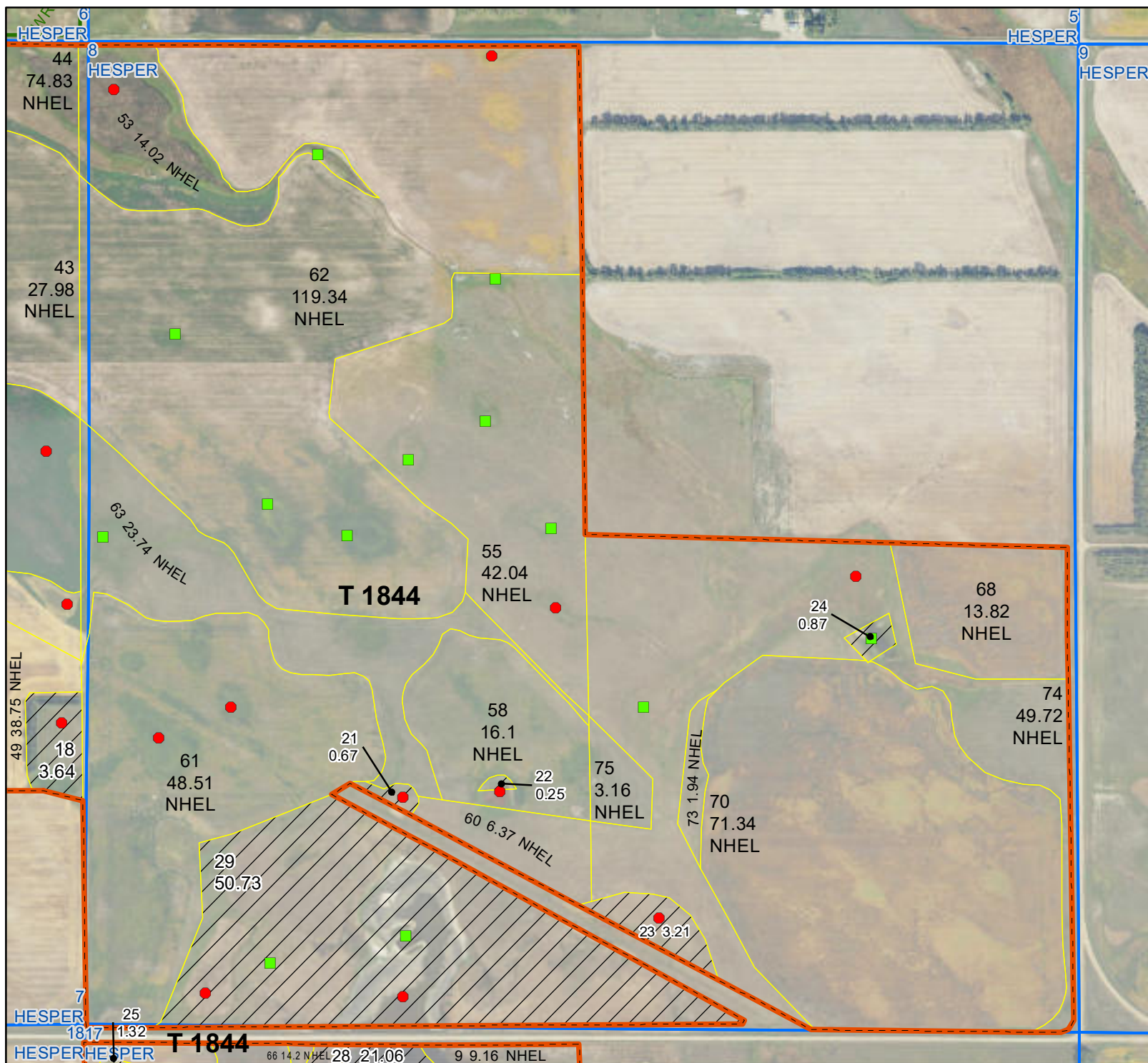
- Barley = Spring for Grain
- Canola = Spring for Processing
- Corn = Yellow for Grain
- Flax = Common for Grain
- Oats = Spring for Grain
- Soybeans = Common for Grain
- Sunflowers = Oil for Grain
- Wheat = Spring for Grain
- All fields are non-irrigated
- Shares are 100% to operator

Program

- WRP
- Tract Boundary
- Non-Cropland
- Cropland
- PLSS

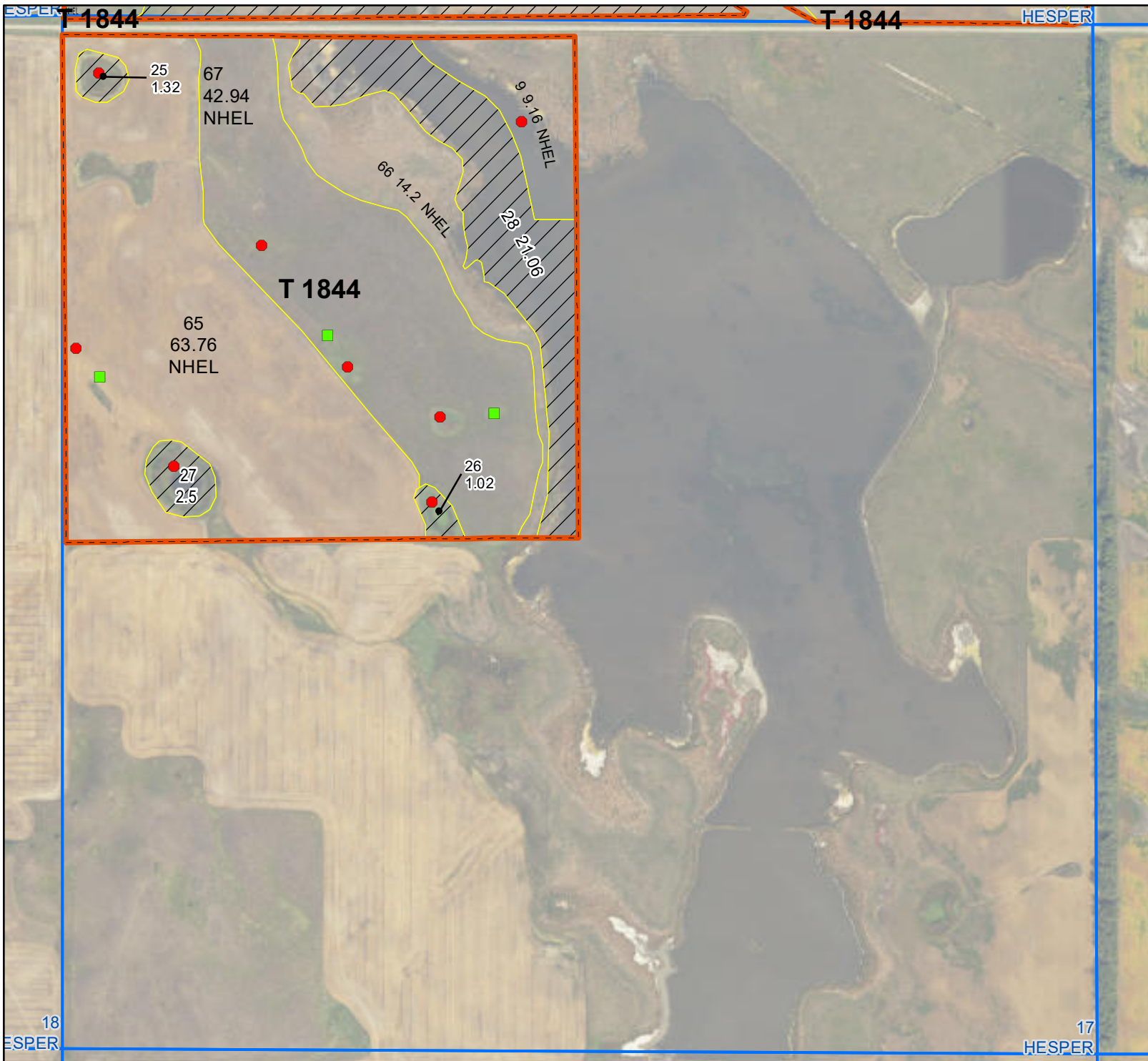
Wetland Determination Identifiers

- Restricted Use
- Limited Restrictions
- Exempt from Conservation Compliance Provisions



United States Department of Agriculture (USDA) Farm Service Agency (FSA) maps are for FSA Program administration only. This map does not represent a legal survey or reflect actual ownership; rather it depicts the information provided directly from the producer and/or National Agricultural Imagery Program (NAIP) imagery. The producer accepts the data 'as is' and assumes all risks associated with its use. USDA-FSA assumes no responsibility for actual or consequential damage incurred as a result of any user's reliance on this data outside FSA Programs. Wetland identifiers do not represent the size, shape, or specific determination of the area. Refer to your original determination (CPA-026 and attached maps) for exact boundaries and determinations or contact USDA Natural Resources Conservation Service (NRCS).





Benson County, ND

Farm 847

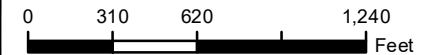
S17 T152N R70W

Phy Cnty: Benson

2025 Program Year

2023 Imagery

Map Created February 03, 2025



Unless Otherwise Noted:

- Barley = Spring for Grain
- Canola = Spring for Processing
- Corn = Yellow for Grain
- Flax = Common for Grain
- Oats = Spring for Grain
- Soybeans = Common for Grain
- Sunflowers = Oil for Grain
- Wheat = Spring for Grain
- All fields are non-irrigated
- Shares are 100% to operator

- Tract Boundary
- Non-Cropland
- Cropland
- PLSS

Wetland Determination Identifiers

- Restricted Use
- Limited Restrictions
- Exempt from Conservation Compliance Provisions



Abbreviated 156 Farm Record

Operator Name

CRP Contract Number(s) : None

Recon ID : None

Transferred From : None

ARCPLC G//F Eligibility : Eligible

Farm Land Data

Farmland	Cropland	DCP Cropland	WBP	EWP	WRP	GRP	Sugarcane	Farm Status	Number Of Tracts
1,149.14	1,008.26	1,008.26	0.00	0.00	0.00	0.00	0.0	Active	1
State Conservation	Other Conservation	Effective DCP Cropland	Double Cropped			CRP	MPL	DCP Ag.Rel. Activity	SOD
0.00	0.00	1,008.26	0.00			0.00	0.00	0.00	0.00

Crop Election Choice

ARC Individual	ARC County	Price Loss Coverage
None	WHEAT, CORN, SOYBN, BARLY	None

DCP Crop Data

Crop Name	Base Acres	CCC-505 CRP Reduction Acres	PLC Yield	HIP
Wheat	340.59	0.00	48	
Corn	116.96	0.00	102	0
Soybeans	318.08	0.00	29	0
Barley	46.27	0.00	55	
TOTAL	821.90	0.00		

NOTES

Tract Number : 1844

Description : SW 6;N2;N2SE 7;S2;NW 8;NW 17-152-70

FSA Physical Location : NORTH DAKOTA/BENSON

ANSI Physical Location : NORTH DAKOTA/BENSON

BIA Unit Range Number :

HEL Status : NHEL: No agricultural commodity planted on undetermined fields

Wetland Status : Tract contains a wetland or farmed wetland

WL Violations : None

Owners

Other Producers

Recon ID : None

Tract Land Data

Farm Land	Cropland	DCP Cropland	WBP	EWP	WRP	GRP	Sugarcane
1,149.14	1,008.26	1,008.26	0.00	0.00	0.00	0.00	0.0



Abbreviated 156 Farm Record

Tract 1844 Continued ...

State Conservation	Other Conservation	Effective DCP Cropland	Double Cropped	CRP	MPL	DCP Ag. Rel Activity	SOD
0.00	0.00	1,008.26	0.00	0.00	0.00	0.00	0.00

DCP Crop Data

Crop Name	Base Acres	CCC-505 CRP Reduction Acres	PLC Yield
Wheat	340.59	0.00	48
Corn	116.96	0.00	102
Soybeans	318.08	0.00	29
Barley	46.27	0.00	55

TOTAL	821.90	0.00
--------------	---------------	-------------

NOTES

In accordance with Federal civil rights law and U.S. Department of Agriculture (USDA) civil rights regulations and policies, the USDA, its Agencies, offices, and employees, and institutions participating in or administering USDA programs are prohibited from discriminating based on race, color, national origin, religion, sex, disability, age, marital status, family/parental status, income derived from a public assistance program, political beliefs, or reprisal or retaliation for prior civil rights activity, in any program or activity conducted or funded by USDA (not all bases apply to all programs). Remedies and complaint filing deadlines vary by program or incident.

Persons with disabilities who require alternative means of communication for program information (e.g., Braille, large print, audiotape, American Sign Language, etc.) should contact the responsible Agency or USDA's TARGET Center at (202) 720-2600 (voice and TTY) or contact USDA through the Federal Relay Service at (800) 877-8339. Additionally, program information may be made available in languages other than English.

To file a program discrimination complaint, complete the USDA Program Discrimination Complaint Form, AD-3027, found online at [How to File a Program Discrimination Complaint](#) and at any USDA office or write a letter addressed to USDA and provide in the letter all of the information requested in the form. To request a copy of the complaint form, call (866) 632-9992. Submit your completed form or letter to USDA by: (1) Mail: U.S. Department of Agriculture Office of the Assistant Secretary for Civil Rights, 1400 Independence Avenue, SW Washington, D.C. 20250-9410; (2) Fax: (202) 690-7442; or (3) Email: program.intake@usda.gov. USDA is an equal opportunity provider, employer, and lender.