

Stutsman County, ND

Farm 5241

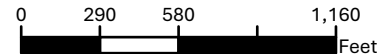
S25 T138N R64W

Phy. Cnty: Stutsman

2025 Program Year

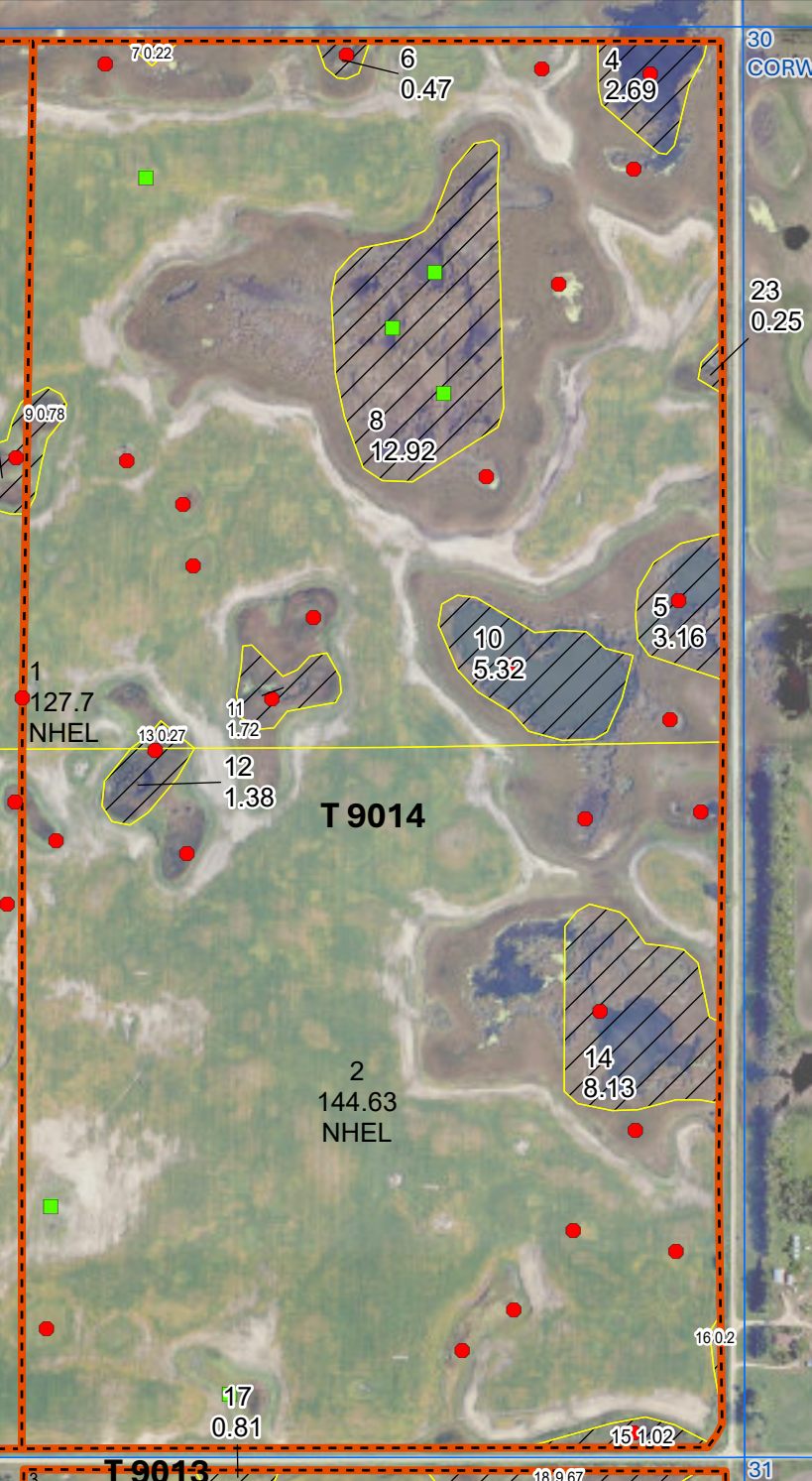
2023 imagery

Map Created 04/15/2025



Unless Otherwise Noted:

- Barley = Spring for Grain
- Canola = Spring for Processing
- Corn = Yellow for Grain
- Flax = Common for Grain
- Oats = Spring for Grain
- Soybeans = Common for Grain
- Sunflowers = Oil for Grain
- Wheat = Spring for Grain
- All fields are non-irrigated
- Shares are 100% to operator



Tract Boundary

Noncropland

Cropland

PLSS

Wetland Determination Identifiers

- Restricted Use
- Limited Restrictions
- Exempt from Conservation

Compliance Provisions

ation only. This map does not represent a legal survey or reflect actual ownership; rather it depicts the information provided directly from the producer and/or National
iated with its use. USDA-FSA assumes no responsibility for actual or consequential damage incurred as a result of any user's reliance on this data outside FSA Programs.
l determination (CPA-026 and attached maps) for exact boundaries and determinations or contact USDA NRCS. USDA is an equal opportunity provider, employer, and lender.



NORTH DAKOTA
STUTSMAN

Form: FSA-156EZ



United States Department of Agriculture
Farm Service Agency

FARM : 5241

Prepared : 4/14/25 12:48 PM CST

Crop Year : 2025

Abbreviated 156 Farm Record

Tract Number : 9014

Description : E1/2 25-138-64
FSA Physical Location : NORTH DAKOTA/STUTSMAN
ANSI Physical Location : NORTH DAKOTA/STUTSMAN
BIA Unit Range Number :
HEL Status : NHEL: No agricultural commodity planted on undetermined fields
Wetland Status : Tract contains a wetland or farmed wetland
WL Violations : None
Owners
Other Producers : None
Recon ID : 38-093-2025-45

Tract Land Data

Farm Land	Cropland	DCP Cropland	WBP	EWP	WRP	GRP	Sugarcane
310.86	272.33	272.33	0.00	0.00	0.00	0.00	0.0
State Conservation	Other Conservation	Effective DCP Cropland	Double Cropped	CRP	MPL	DCP Ag. Rel Activity	SOD
0.00	0.00	272.33	0.00	0.00	0.00	0.00	0.00

DCP Crop Data

Crop Name	Base Acres	CCC-505 CRP Reduction Acres	PLC Yield
Wheat	6.84	0.00	42
Corn	99.52	0.00	116
Soybeans	165.93	0.00	29

TOTAL 272.29 0.00

NOTES