

# Farmland Auction

**25**  
YEARS  
est. 2000

**139.36 Acres • Clay County, MN**

---

**Wednesday, May 21, 2025 – 11:30 a.m.**

**Holiday Inn • Fargo, ND**



***OWNER: John A. Butenhoff***

STOCK PHOTO



**Pifer's**

**877.700.4099**

**[www.pifers.com](http://www.pifers.com)**

# INTRODUCTION

**Auction Note:** Pifer's Auction & Realty is honored to present 139.36 +/- acres of farmland in Alliance Township. This high-quality property features 117.47 +/- FSA cropland acres and a strong Soil Productivity Index (SPI) of 80.3, with predominant Class II Glyndon and Wheatville loam soils. Currently planted to newly established alfalfa, this farm is ideally suited for hay production or future rotational cropping. The land sells with immediate possession, providing a timely opportunity for 2025 farming operations. Conveniently located near Sabin & Barnesville, MN, this farm is accessible by township-maintained roads.

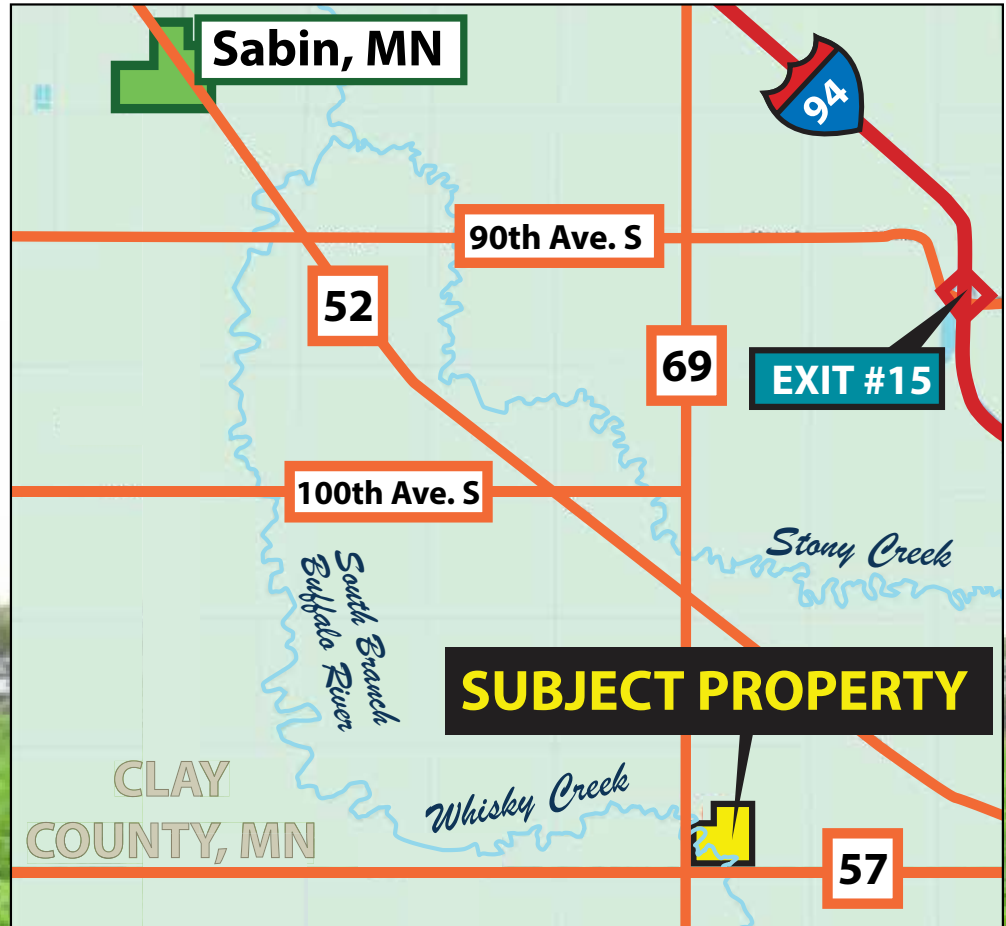
## Property Highlights

- 117.47 +/- FSA cropland acres
- Strong cropping history and Class II soils
- Newly planted to alfalfa
- Immediate possession for 2025 use
- Enrolled in the Conservation Reserve Program (CRP) with excellent annual payments
- Good access and strong location near Barnesville, MN
- Excellent opportunity for producers or investors

## Primary Soil Types:

- Glyndon loam (PI: 89) – 63.1%
- Wheatville silt loam (PI: 89) – 17.4%
- Augsburg silt loam (PI: 90) – 7.7%
- Lamoure silt loam (PI: 15) – 11.8% (frequently flooded)

**Driving Directions:** From Sabin, MN, head southeast on County Rd. #52 for 5.4 miles. Turn right (south) onto 110th St. S / County Rd. #69 and continue 2 miles to the property.



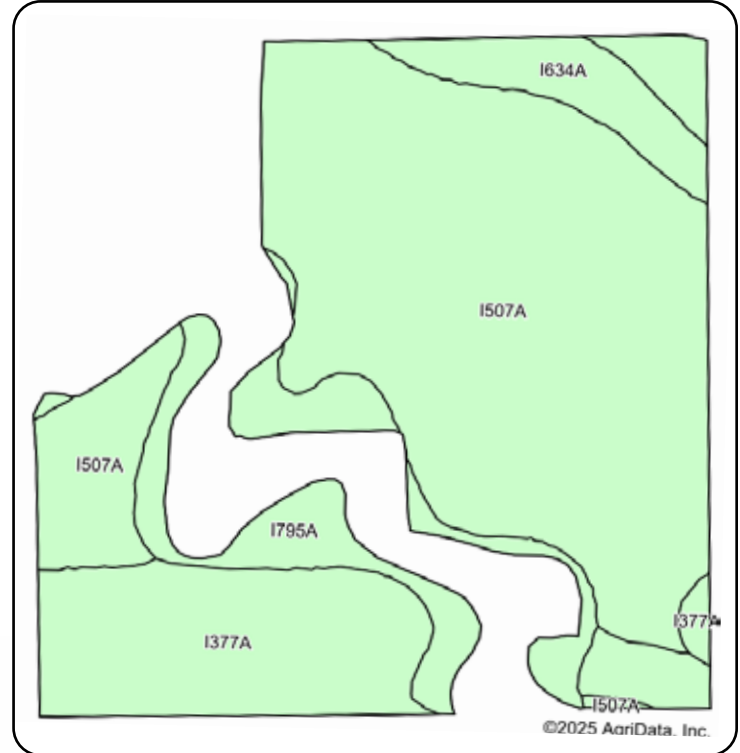
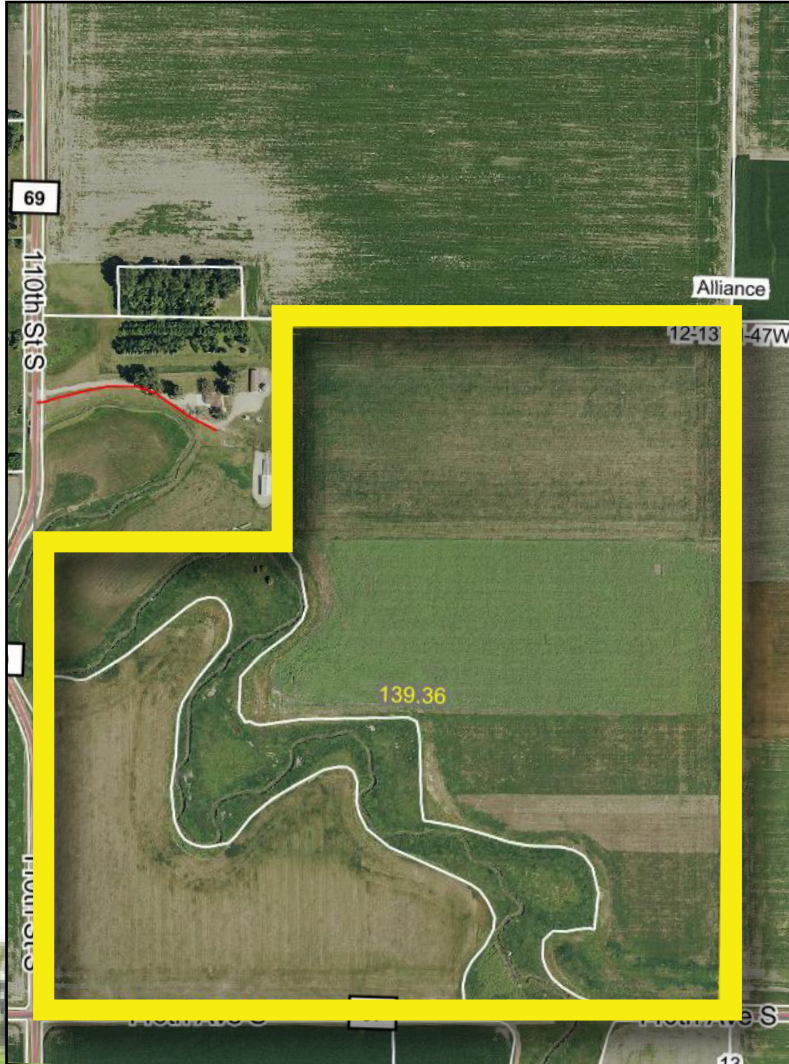
**Steve Link • 701.361.9985 or [stlink@pifers.com](mailto:stlink@pifers.com)**

**Pifer's**

1506 29th Ave. S • Moorhead, MN 56560

# PROPERTY INFORMATION

**Acres:** 139.36 +/-  
**Legal:** SW¼ Less Bridge & Less 20.07 Ac 12-137-47  
**FSA Crop Acres:** 117.47 +/-  
**CRP Acres:** 3.35 acres @ \$113.84/acre - \$381.00/annually – Expires: 9/30/2031  
**Taxes (2025):** \$5,420.00



Crop	Base Acres	Yield
Corn	40.78	129 bu.
Sunflowers	0.61	1,842 lbs.
Soybeans	50.22	37 bu.
<b>Total Base Acres: 91.61</b>		

Code	Soil Description	Acres	Percent of field	Non-Irr Class *c	Productivity Index
I507A	Glyndon loam, 0 to 2 percent slopes	74.05	63.1%	Ile	89
I377A	Wheatville silt loam, 0 to 2 percent slopes	20.45	17.4%	Ile	89
I795A	Lamoure silt loam, 0 to 2 percent slopes, frequently flooded	13.91	11.8%	IIw	15
I634A	Augsburg silt loam, 0 to 1 percent slopes	9.06	7.7%	IIw	90
<b>Weighted Average</b>					<b>80.3</b>

# TERMS & CONDITIONS

## I. Terms and Conditions of Auction

All bidding is open to the public without regard to a prospective bidder's sex, race, color, religion, or national origin.

**A.** If you intend to bid on this property, you will be required to provide a cashier's check or personal check in the amount of 10 percent of the purchase price as earnest money on the date of the auction. If you are the successful bidder you will be required to complete and sign a standard Real Estate Purchase Agreement.

**B.** If you are the highest bidder on any of this property, you will be required to deposit a check with the closing agent who will hold the money in escrow until the closing date. All documentation will be available for your review prior to commencement of the auction. All real estate sales must be closed and the total balance of the purchase price paid on or before 7/7/25. After the auction sale you will be given an appointment date and time with the Closing Agent for a closing date to close the transaction.

## II. Bidding Procedures

All bidding is open to the public. You need only to raise your hand and shout out your bid, or instruct any of the ring men to do so on your behalf. Anyone who wishes to bid must first register to obtain a bidder's card at the registration desk.

Retain your bidder number for the duration of the auction. You are responsible for your assigned number. The property is sold when the Auctioneer announces, "sold," identifies the winning bid number and the amount of the bid and the information is recorded by the Auctioneer or his designee. In case of a tie bid, bidding will be reopened between the two tied bidders. The high bid cannot be withdrawn once the Auctioneer determines it to be the winning sale bid.

## III. Purchase Agreement, Marketability, Signing Area

At the time the auction is complete, the successful high bidder must sign a standard Real Estate Purchase Agreement to purchase this property for which it was the high bidder. An appointment date to close the transaction will be furnished to the Purchaser after the Purchase Agreement is signed. The transaction must be closed and the money paid on or before July 7, 2025, or the Purchaser will be in default and the earnest money paid herein will be forfeited to the Seller. The Pifer Group Inc, dba Pifer's Auction & Realty and the Seller assumes that the bidders have inspected the property and are satisfied with the conditions of such property and accept that property in an "as is," "where is" condition. The buyer agrees to hold The Pifer Group, Inc. and its client harmless regarding any representation as to the status, zoning, condition and any other material representation regarding this property.

## III. Purchase Agreement, Marketability, Signing Area (cont'd)

It is the Purchaser's responsibility to make needed repairs or improvements, if any to bring the property up to necessary state, local, and federal codes. The Pifer Group, Inc. and the sellers obtained information from sources deemed reliable, but do not guarantee its accuracy. Due diligence of property and related information by buyer is strongly recommended.

## IV. Forfeiture of Purchase Money Paid Pursuant to the Terms of the Purchase Agreement

Purchaser's failure to close the sale by the closing date due to insufficient funds, or for any other reason will result in the forfeiture of Purchaser's earnest money deposit.

## V. Closing

At closing, Buyer will be required to pay the difference between the purchase money deposit and the final selling price. Any fees and closing cost regarding determination of title will be paid by the Purchaser.

## VI. Showing of Property

Showing of property will be held by appointment only. WHETHER OR NOT YOU ACTUALLY INSPECT THE PROPERTY, YOU WILL BE BOUND TO ACCEPT THE PROPERTY "AS IS" AND WITH ALL FAULTS AND DEFECTS AND WITH NO EXPRESSED OR IMPLIED WARRANTY AS TO MARKETABILITY OR THE CONDITION THEREOF. It will be your responsibility to make any needed repairs, improvements or compliance requirements to bring the property to applicable codes.

## VII. Miscellaneous

Conduct of the auction and increments of bidding will be at the discretion of the Auctioneer. The determination by the Auctioneer as to all matters, including the high bidder and the amount of the high bid will be conclusive.

Announcements made by the Auctioneer, Kevin D. Pifer of Pifer's Auction & Realty, will take precedence over said printed matter. For complete prospectus and earnest money requirements contact Pifer's.

This auction bidder's information (including these terms and conditions and any picture or description of any property) is for your information and convenience only. Nothing contained in this information shall be binding on the Seller of the property or the Auctioneer, Pifer's Auction & Realty.

We encourage you to inspect any property you wish to bid on. The seller reserves the right to reject any and all bids.

This sale is managed by Pifer's Auction & Realty, Kevin Pifer, MN #14-106.

877.700.4099



www.pifers.com