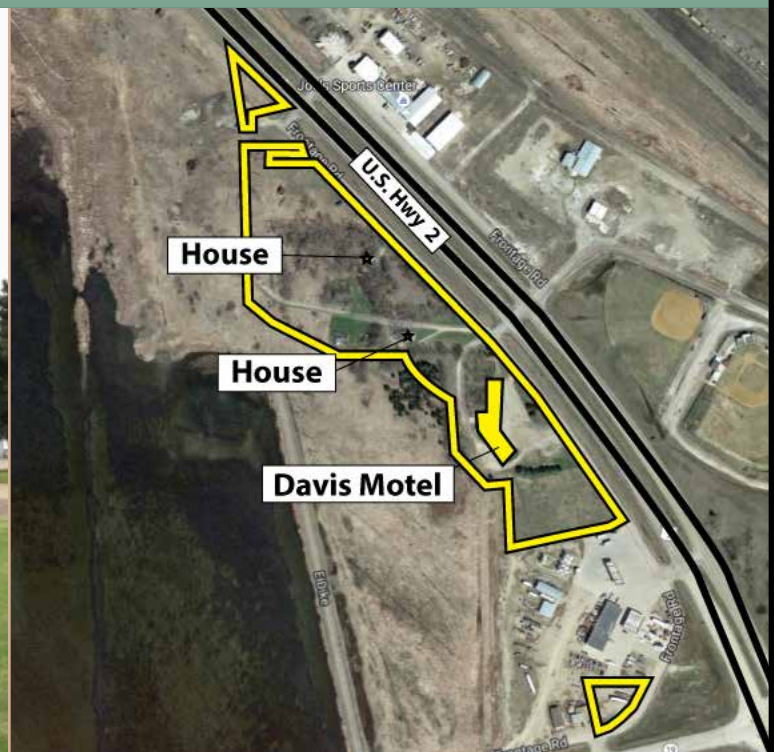


Motel and 36.96 +/- Acres of Development Land - Devils Lake, ND

# Motel & Development Land for Sale



*Located on the western edge of Devils Lake, the iconic Davis Motel and associated development land is for sale.*



# Property Information

# Price: \$2,800,000

**Property Note:** Located on the western edge of Devils Lake, the iconic Davis Motel and associated development land is for sale. This high visibility (south side of HWY #2) motel and land will fit your needs for easy access, great visibility, and functionality. Re-development or expansion opportunities abound. Motel has attached home and room to grow. **There are an additional 29.65 +/- acres of development land available at \$1,000,000.**

## Motel and Property Around it:

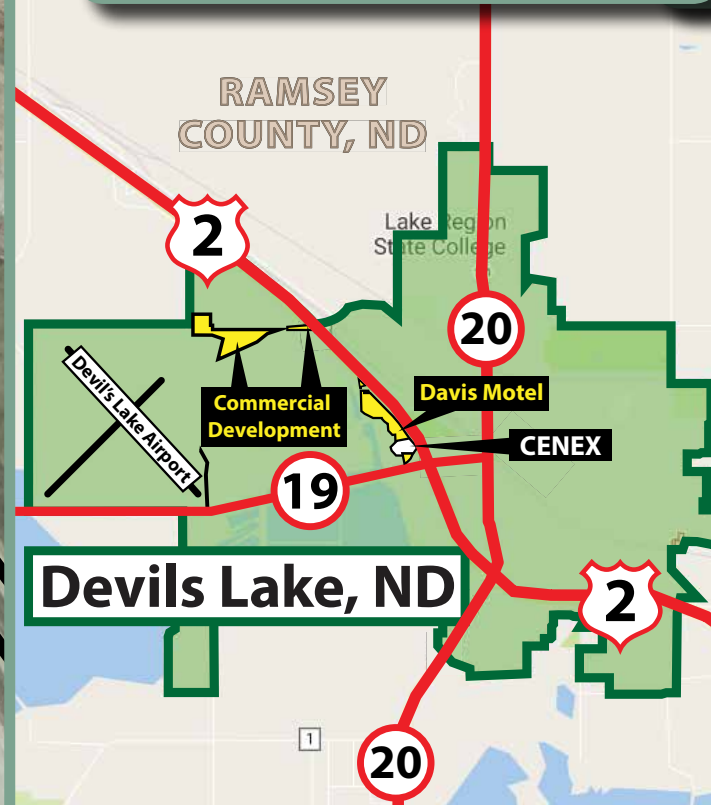
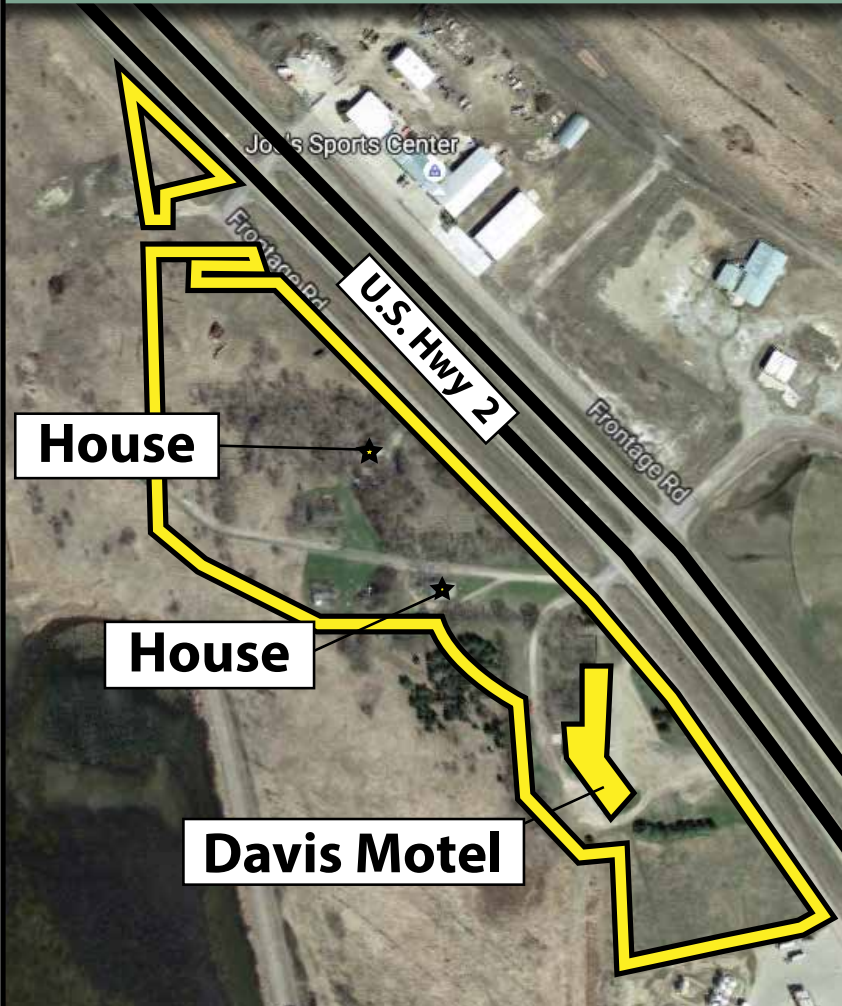
**Address:** 702 Highway 2 West Devils Lake, ND 58301

**Acres:** 7.31 +/-

**Legal:** Lot 2 BLK 1; Lot 1 BLK 1; PORTIONS OF LOTS 1-5 & ALL OF LOTS 6-8 BLK 170; ALL THAT PART OF BLK 168 LYING S & W OF US HWY #2; ALL THAT PART OF BLK 169 LYING S & W OF US HWY #2; W 15' OF WATER BLK P; WATER BLK Q LESS RD, LAKE HOMES CENTER AND DL PARK BOARD ETC. HWY #2 HWY E; WATER BLK P EXCEPT W 15' & LESS A TRACT 50' X 175' HWY #2 HWY E; ALL THAT PART OF LK 150 LYING S & W OF US HWY #2; WATER BLK O HWY #2 HWY E

**Taxes (2015):** \$5,498.63

\*Motel can be purchased separately. Property can be subdivided around the Davis Motel.



Contact:  
**Dave Keller**  
701.261.8804  
dkeller@pifers.com



Contact:  
**Bob Pifer**  
701.371.8538  
bpifer@pifers.com

**Pifer's**  
AUCTION & REALTY

1506 29th Ave South Moorhead, MN 56560

# Additional Property Information

## All Property For Sale (36.96 +/- Acres):

### Commercial Property

**Acres:** 29.65 +/-

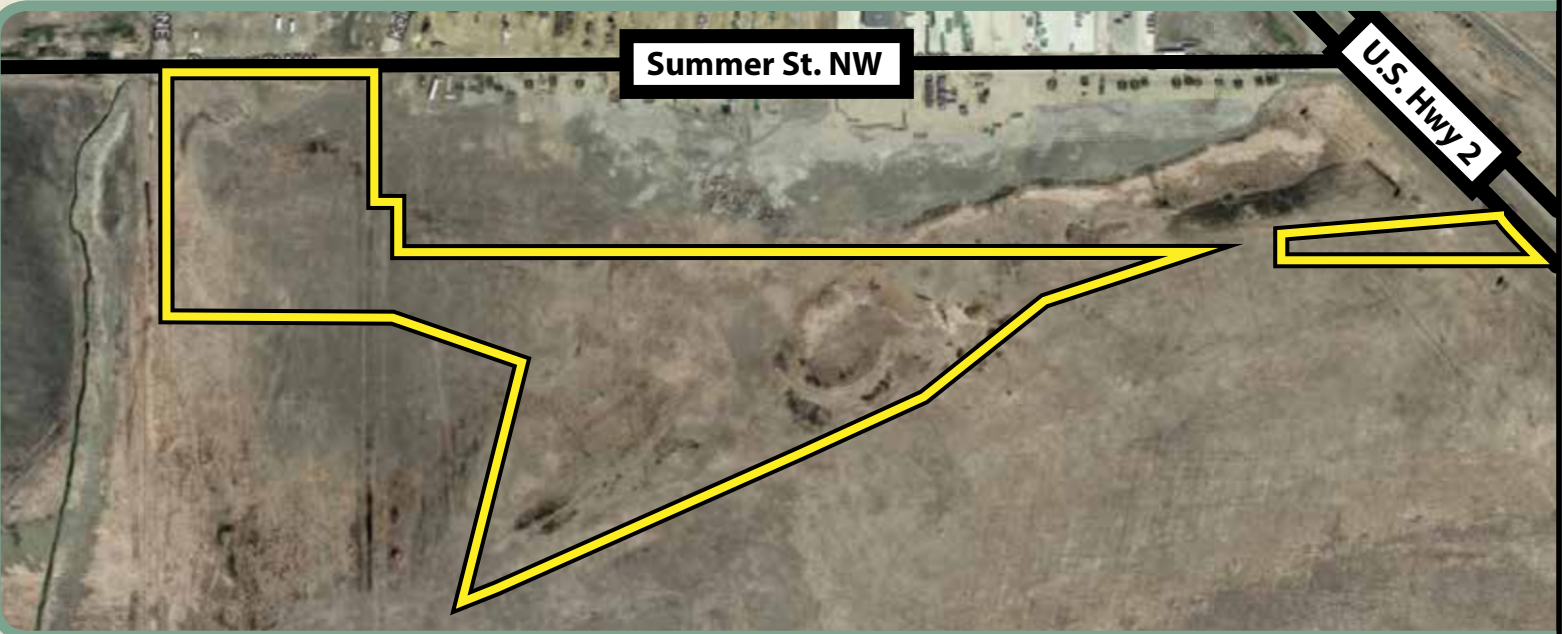
**Legal:** LOT 1 BLK 1 DAVIS COMMERCIAL PARK; LOT 1 & 2 LESS RD & SUBDIVISION 33 154 64; WATER BLK W HWY 2 HWY E; TRACT 25' X 175' N END NE¼ LESS TRACT TO RR ETC 33 154 64; TRACT OF LAND LOCATED IN WATER BLOCKS K, L & M 2.88 ACRES; A STRIP 1 RD WIDE ALONG S & SE SIDE OF LOT 6 33 154 64

**Taxes (2015):** \$513.23

\*All property can be subdivided.



## Commercial District Lots:





# Pifer's

AUCTION & REALTY



Pifer's  
AUCTION & REALTY



877.700.4099  
[www.pifers.com](http://www.pifers.com)