

West Fargo, ND • 26 +/- Acres

# DEVELOPMENT LAND FOR SALE

26 +/- Acres • West Fargo, ND

PRICE: \$1,415,700



**Pifer's**  
— REALTY —



1506 29th Ave. S • Moorhead, MN

877.700.4099

[www.pifers.com](http://www.pifers.com)

# Introduction

This West Fargo property offers an excellent opportunity to capitalize on future development potential. Located across 15th St W from the Hayden Heights Development, this 26 +/- acre property is one that investors and developers will not want to miss out. Please call Darin Peterson or Steve Link for more information.



**Darin Peterson | Real Estate Agent**  
701.220.5396  
darin@pifers.com

# Property Information

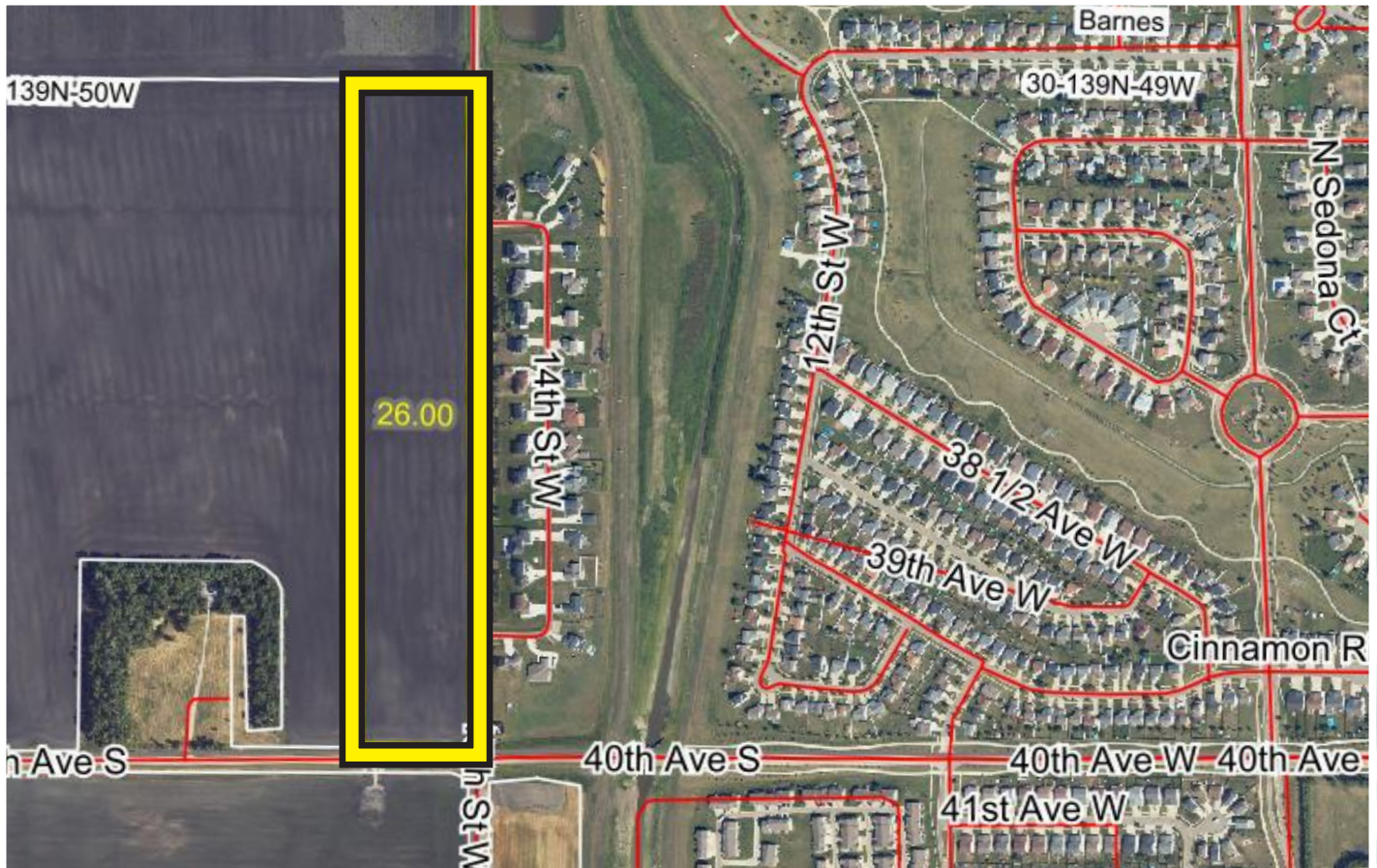
**Legal:** The W 425' of the E 475' of the SE¼ Section 25-139-50

**Parcel Number:** 53000009132060

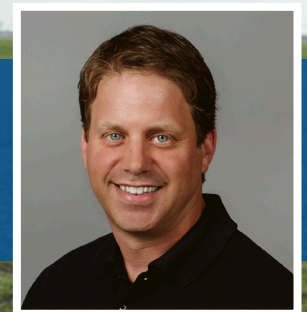
**Acres:** 26 +/- (1,132,560 +/- sq. ft.)

**Price:** \$1.25 / sq. ft.

**Taxes (2021):** \$2,120.29



**Steve Link | Broker**  
701.361.9985  
stlink@pifers.com



1506 29th Ave. S • Moorhead, MN

# Pifer's

— REALTY —



Pifer's  
— REALTY —



1506 29th Ave. S • Moorhead, MN

877.700.4099

[www.pifers.com](http://www.pifers.com)