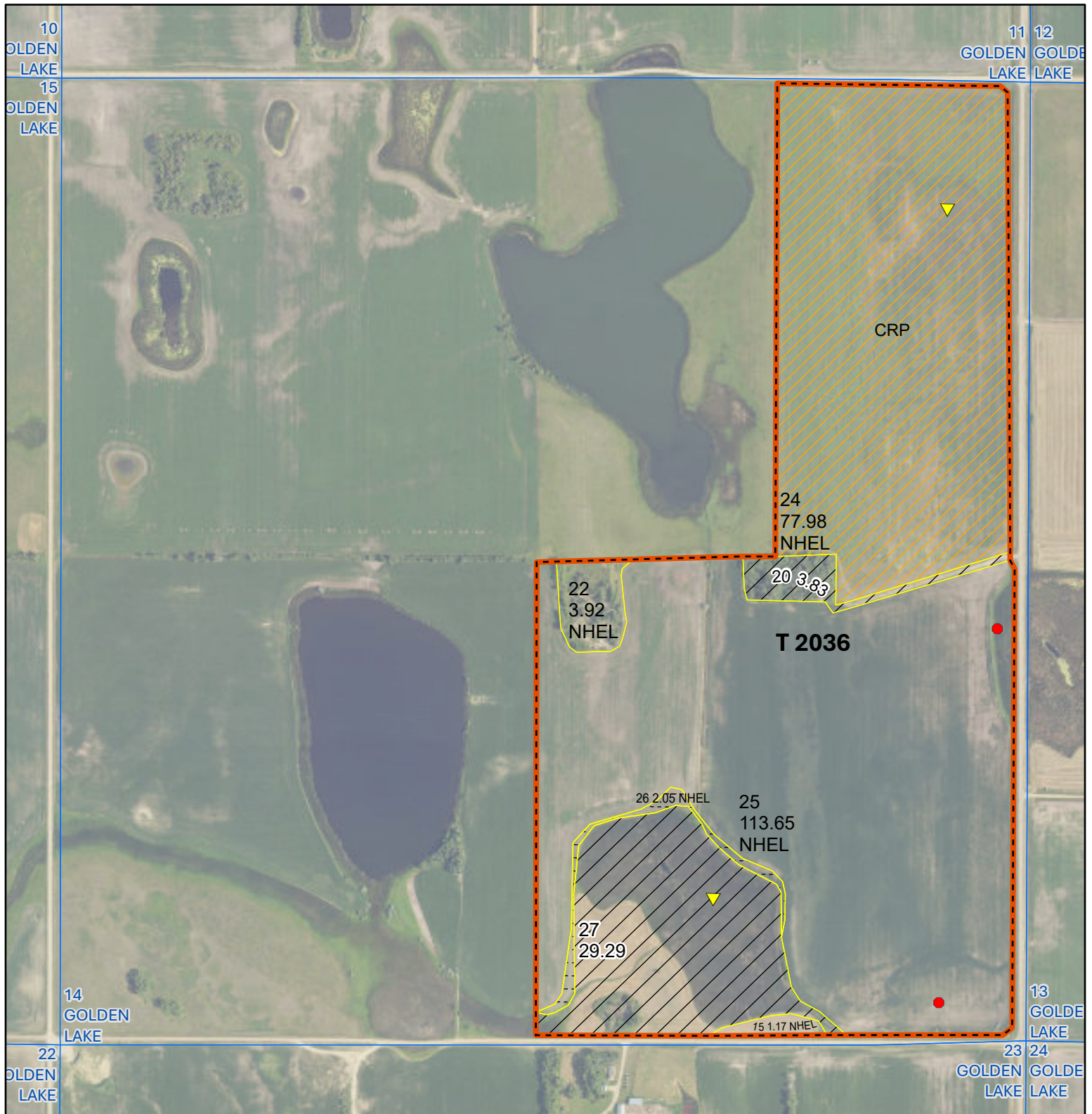




United States
Department of
Agriculture

Steele County, ND

Farm 4174



Native Sod CRP Noncropland
Tract Boundary PLSS Cropland

Wetland Determination Identifiers

- Restricted Use
- Limited Restrictions
- Exempt from Conservation
- Compliance Provisions

Barley = Spring for Grain
Canola = Spring for Processing
Corn = Yellow for Grain
Flax = Common for Grain
Oats = Spring for Grain

Unless Otherwise Noted:

Soybeans = Common for Grain
Sunflowers = Oil for Grain
Wheat = Spring for Grain
All fields are non-irrigated
Shares are 100% to operator

2025 Program Year

Phy. County: Steele

2023 imagery

S14 T147N R55W

0 360 720
Ft

United States Department of Agriculture (USDA) Farm Service Agency (FSA) maps are for FSA Program administration only. This map does not represent a legal survey or reflect actual ownership; rather it depicts the information provided directly from the producer and/or National Agricultural Imagery Program (NAIP) imagery. The producer accepts the data 'as is' and assumes all risks associated with its use. USDA-FSA assumes no responsibility for actual or consequential damage incurred as a result of any user's reliance on this data outside FSA Programs. Wetland identifiers do not represent the size, shape, or specific determination of the area. Refer to your original determination (CPA-026 and attached maps) for exact boundaries and determinations or contact USDA Natural Resources Conservation Service (NRCS). USDA is an equal opportunity provider, employer, and lender.

Map Created 04/29/2025

Abbreviated 156 Farm Record

NOTES

Tract Number : 2036

Description : SE,E2NE(14) 147-55

FSA Physical Location : NORTH DAKOTA/STEELE

ANSI Physical Location : NORTH DAKOTA/STEELE

BIA Unit Range Number :

HEL Status : NHEL: No agricultural commodity planted on undetermined fields

Wetland Status : Tract contains a wetland or farmed wetland

WL Violations : None

Owners :

Other Producers :

Recon ID : None

Tract Land Data

Farm Land	Cropland	DCP Cropland	WBP	EWP	WRP	GRP	Sugarcane
231.89	198.77	198.77	0.00	0.00	0.00	0.00	0.0
State Conservation	Other Conservation	Effective DCP Cropland	Double Cropped	CRP	MPL	DCP Ag. Rel Activity	SOD
0.00	0.00	120.79	0.00	77.98	0.00	0.00	2.05

DCP Crop Data

Crop Name	Base Acres	CCC-505 CRP Reduction Acres	PLC Yield
Wheat	26.64	6.04	41
Corn	9.43	0.00	110
Sunflowers	6.15	0.00	1381
Soybeans	76.52	6.04	28
TOTAL	118.74	12.08	