

Farmland Auction

25
YEARS
est. 2000

225.52 Acres • Norman County, MN

Monday, September 22, 2025 – 12:00 p.m.

Courtyard by Marriott • Moorhead, MN



OWNER: Farm USA Investors LLP



Pifer's

877.700.4099

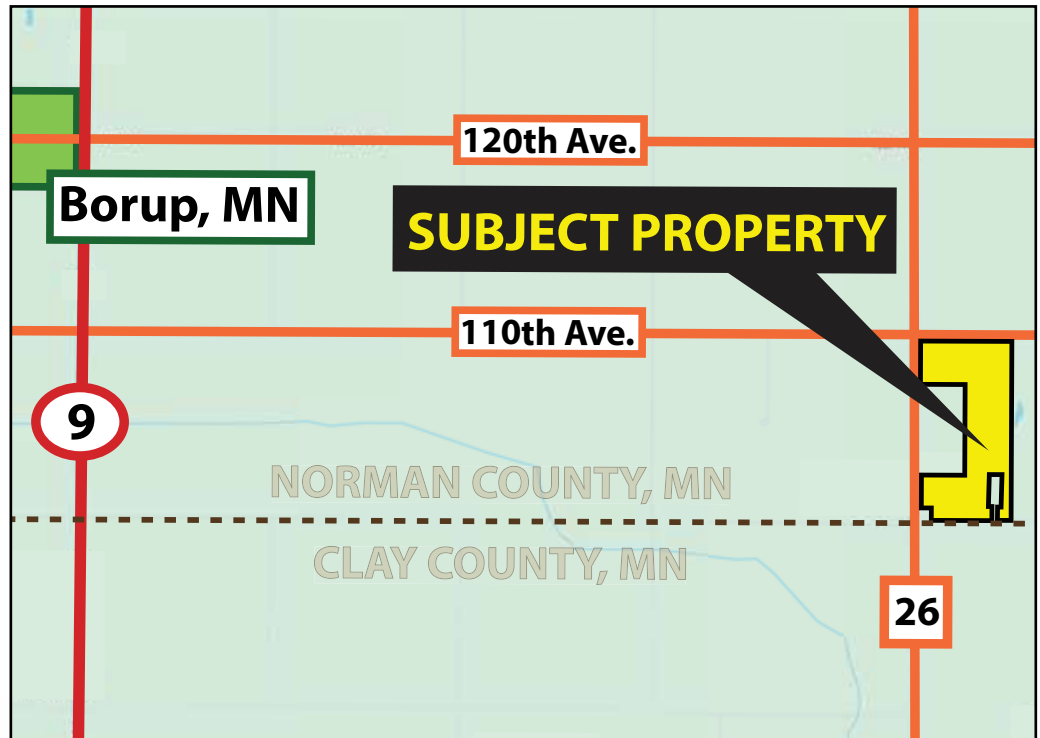
www.pifers.com

INTRODUCTION

Auction Note: This auction features 225.52 +/- acres of exceptional Red River Valley cropland in Norman County, MN. The property is almost all crop acres with productive soils ideal for growing corn, soybeans, wheat and sugar beets. Soil types include Rockwell loam, Grimstad fine sandy loam, Antler silty loam, and other productive class II soils with a total soil productivity index (SPI) of 75.1. This will be a live auction with online bidding available. Don't miss this opportunity to expand your farm operation or diversify your investment portfolio!

Driving Directions:

From Borup, MN, head south on Hwy. #9 for one mile. Then, head east on 110th Ave. for 4 miles. The intersection of 110th Ave. and County Rd. #26 marks the NW corner of the property.



Jack Pifer • 701.261.4762 or jack@pifers.com

Pifer's

1506 29th Ave. S • Moorhead, MN 56560

PROPERTY INFORMATION

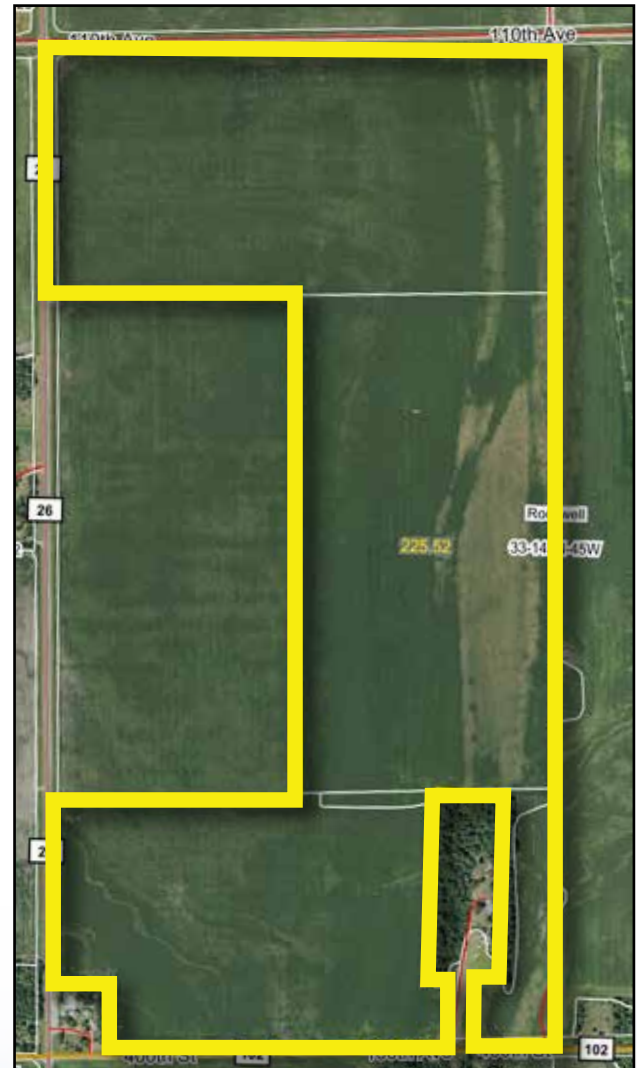
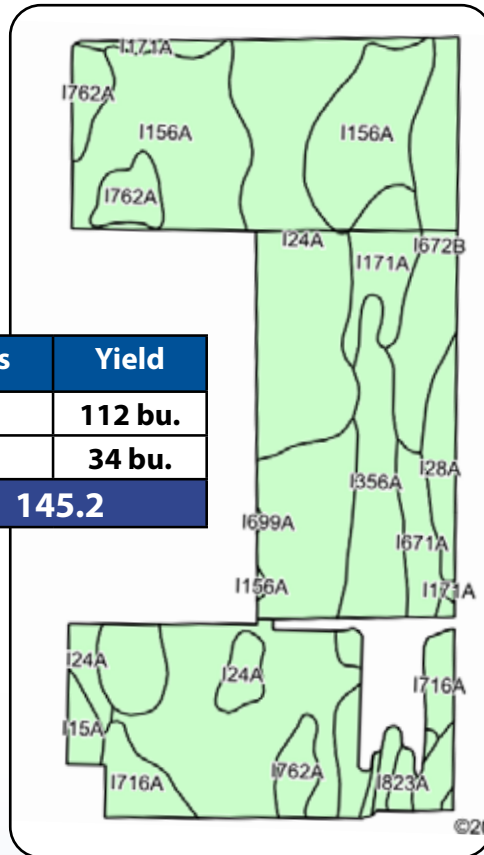
Acres: 225.52 +/-

Legal: Tract in N½NW¼, SE¼NW¼, E½SW¼,
SW¼SW¼ Less 1.25 Acre Part of SW¼SW¼ &
Less 10.64 Acre Part of E½SW¼ 33-143-45

FSA Crop Acres: 219.72 +/-

Taxes (2025): \$4,116.00

Crop	Base Acres	Yield
Corn	41.79	112 bu.
Soybeans	103.41	34 bu.
Total Base Acres: 145.2		



Code	Soil Description	Acres	Percent of field	Non-Irr Class *c	Irr Class *c	Productivity Index
I699A	Rockwell loam, 0 to 1 percent slopes	46.38	21.2%	IIw		87
I24A	Grimstad fine sandy loam, 0 to 2 percent slopes, aspen parkland	43.24	19.7%	IIs		88
I156A	Antler silt loam, 0 to 2 percent slopes	40.07	18.2%	Ile		89
I672B	Sioux sandy loam, 2 to 6 percent slopes	19.21	8.7%	VIIs		33
I356A	Ulen fine sandy loam, 0 to 2 percent slopes	18.06	8.2%	IIIe		55
I171A	Rockwell fine sandy loam, 0 to 1 percent slopes	10.50	4.8%	IIw		87
I762A	Vallers loam, lake plain, 0 to 1 percent slopes	10.43	4.7%	IIw		90
I716A	Arveson clay loam, 0 to 1 percent slopes	8.65	3.9%	IIIw		74
I28A	Hangaard sandy loam, 0 to 2 percent slopes	5.82	2.6%	IVw		29
I646A	Viking clay loam, 0 to 1 percent slopes	5.62	2.6%	IIw		75
I671A	Sioux gravelly sandy loam, 0 to 2 percent slopes	5.49	2.5%	VIIs		33
I15A	Hecla loamy fine sand, 0 to 2 percent slopes	2.51	1.1%	IVe	IIIe	50
I672A	Sioux sandy loam, 0 to 2 percent slopes	2.37	1.1%	VIIs		33
I823A	Rockwell and Kratka soils, 0 to 1 percent slopes	1.64	0.7%	IIIw		15
Weighted Average						75.1

TERMS & CONDITIONS

I. Terms and Conditions of Auction

All bidding is open to the public without regard to a prospective bidder's sex, race, color, religion, or national origin.

A. If you intend to bid on this property, you will be required to provide a cashier's check or personal check in the amount of 10 percent of the purchase price as earnest money on the date of the auction. If you are the successful bidder you will be required to complete and sign a standard Real Estate Purchase Agreement.

B. If you are the highest bidder on any of this property, you will be required to deposit a check with the closing agent who will hold the money in escrow until the closing date. All documentation will be available for your review prior to commencement of the auction. All real estate sales must be closed and the total balance of the purchase price paid on or before 11/6/25. After the auction sale you will be given an appointment date and time with the Closing Agent for a closing date to close the transaction.

II. Bidding Procedures

All bidding is open to the public. You need only to raise your hand and shout out your bid, or instruct any of the ring men to do so on your behalf. Anyone who wishes to bid must first register to obtain a bidder's card at the registration desk.

Retain your bidder number for the duration of the auction. You are responsible for your assigned number. The property is sold when the Auctioneer announces, "sold," identifies the winning bid number and the amount of the bid and the information is recorded by the Auctioneer or his designee. In case of a tie bid, bidding will be reopened between the two tied bidders. The high bid cannot be withdrawn once the Auctioneer determines it to be the winning sale bid.

III. Purchase Agreement, Marketability, Signing Area

At the time the auction is complete, the successful high bidder must sign a standard Real Estate Purchase Agreement to purchase this property for which it was the high bidder. An appointment date to close the transaction will be furnished to the Purchaser after the Purchase Agreement is signed. The transaction must be closed and the money paid on or before November 6, 2025, or the Purchaser will be in default and the earnest money paid herein will be forfeited to the Seller. The Pifer Group Inc, dba Pifer's Auction & Realty and the Seller assumes that the bidders have inspected the property and are satisfied with the conditions of such property and accept that property in an "as is," "where is" condition. The buyer agrees to hold The Pifer Group, Inc. and its client harmless regarding any representation as to the status, zoning, condition and any other material representation regarding this property. It is the Purchaser's responsibility to make needed repairs or improvements, if any to bring the property up to necessary state, local, and federal codes. The Pifer Group, Inc. and the sellers obtained information from sources deemed reliable, but do not guarantee its accuracy. Due diligence of property and related information by buyer is strongly recommended.

IV. Forfeiture of Purchase Money Paid Pursuant to the Terms of the Purchase Agreement

Purchaser's failure to close the sale by the closing date due to insufficient funds, or for any other reason will result in the forfeiture of Purchaser's earnest money deposit.

V. Closing

At closing, Buyer will be required to pay the difference between the purchase money deposit and the final selling price. Any fees and closing cost regarding determination of title will be paid by the Purchaser.

VI. Showing of Property

Showing of property will be held by appointment only. WHETHER OR NOT YOU ACTUALLY INSPECT THE PROPERTY, YOU WILL BE BOUND TO ACCEPT THE PROPERTY "AS IS" AND WITH ALL FAULTS AND DEFECTS AND WITH NO EXPRESSED OR IMPLIED WARRANTY AS TO MARKETABILITY OR THE CONDITION THEREOF. It will be your responsibility to make any needed repairs, improvements or compliance requirements to bring the property to applicable codes.

VII. Miscellaneous

Conduct of the auction and increments of bidding will be at the discretion of the Auctioneer. The determination by the Auctioneer as to all matters, including the high bidder and the amount of the high bid will be conclusive.

Announcements made by the Auctioneer, Kevin D. Pifer of Pifer's Auction & Realty, will take precedence over said printed matter. For complete prospectus and earnest money requirements contact Pifer's.

This auction bidder's information (including these terms and conditions and any picture or description of any property) is for your information and convenience only. Nothing contained in this information shall be binding on the Seller of the property or the Auctioneer, Pifer's Auction & Realty.

We encourage you to inspect any property you wish to bid on. The seller reserves the right to reject any and all bids.

This sale is managed by Pifer's Auction & Realty, Kevin Pifer, MN #14-106.

877.700.4099



www.pifers.com