





 Tract Boundary  Noncropland  
 PLSS  Cropland

Wetland Determination Identifiers  
 Restricted Use  
 Limited Restrictions  
 Exempt from Conservation  
Compliance Provisions

Unless Otherwise Noted:  
Barley = Spring for Grain  
Canola = Spring for Processing  
Corn = Yellow for Grain  
Flax = Common for Grain  
Oats = Spring for Grain  
Soybeans = Common for Grain  
Sunflowers = Oil for Grain  
Wheat = Spring for Grain  
All fields are non-irrigated  
Shares are 100% to operator

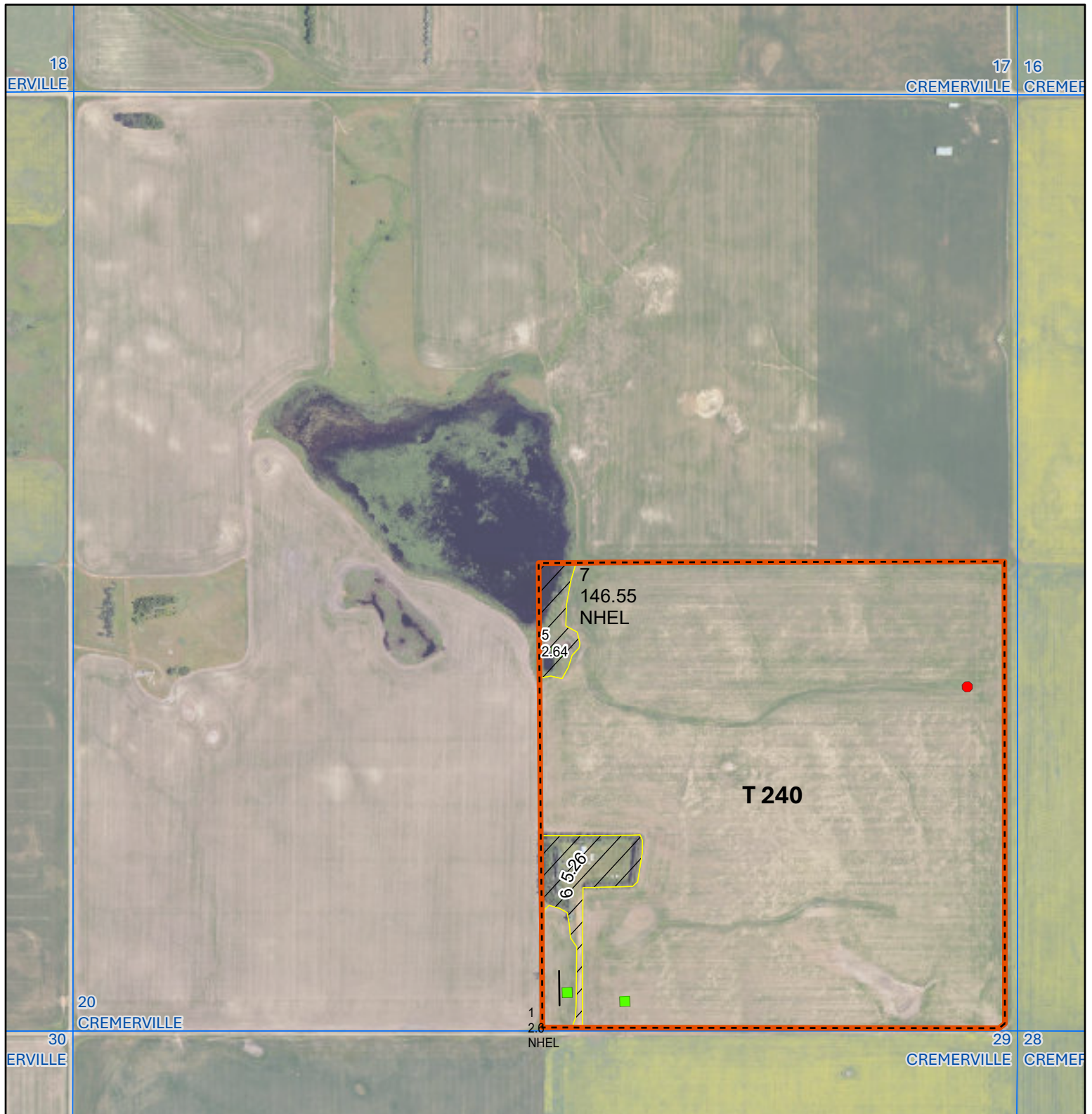
2025 Program Year  
Phy. County: McLean  
2023 imagery  
**S5 T149N R89W**  
0 350 700  
Ft



United States  
Department of  
Agriculture

McLean County, ND

Farm 12360



Tract Boundary Noncropland  
 PLSS Cropland

Wetland Determination Identifiers

- Restricted Use
- Limited Restrictions
- Exempt from Conservation
- Compliance Provisions

Unless Otherwise Noted:

Barley = Spring for Grain	Soybeans = Common for Grain
Canola = Spring for Processing	Sunflowers = Oil for Grain
Corn = Yellow for Grain	Wheat = Spring for Grain
Flax = Common for Grain	All fields are non-irrigated
Oats = Spring for Grain	Shares are 100% to operator

2025 Program Year  
Phy. County: McLean  
2023 imagery

**S20 T150N R89W**

0 375 750  
Ft

United States Department of Agriculture (USDA) Farm Service Agency (FSA) maps are for FSA Program administration only. This map does not represent a legal survey or reflect actual ownership; rather it depicts the information provided directly from the producer and/or National Agricultural Imagery Program (NAIP) imagery. The producer accepts the data 'as is' and assumes all risks associated with its use. USDA-FSA assumes no responsibility for actual or consequential damage incurred as a result of any user's reliance on this data outside FSA Programs. Wetland identifiers do not represent the size, shape, or specific determination of the area. Refer to your original determination (CPA-026 and attached maps) for exact boundaries and determinations or contact USDA Natural Resources Conservation Service (NRCS). USDA is an equal opportunity provider, employer, and lender.

Map Created 05/01/2025





## Abbreviated 156 Farm Record

## Operator Name

CRP Contract Number(s) : None

Recon ID : 38-055-2016-153

Transferred From : None

ARCPLC G//F Eligibility : Eligible

## Farm Land Data

Farmland	Cropland	DCP Cropland	WBP	EWP	WRP	GRP	Sugarcane	Farm Status	Number Of Tracts
157.05	149.15	149.15	0.00	0.00	0.00	0.00	0.0	Active	1
State Conservation	Other Conservation	Effective DCP Cropland		Double Cropped		CRP	MPL	DCP Ag.Rel. Activity	SOD
0.00	0.00	149.15		0.00		0.00	0.00	0.00	0.00

## Crop Election Choice

ARC Individual	ARC County	Price Loss Coverage
None	WHEAT, FLAX, PEAS	CANOL

## DCP Crop Data

Crop Name	Base Acres	CCC-505 CRP Reduction Acres	PLC Yield	HIP
Wheat	60.14	0.00	37	
Flax	10.18	0.00	20	
Canola	30.17	0.00	1359	
Dry Peas	19.84	0.00	2155	
<b>TOTAL</b>	<b>120.33</b>	<b>0.00</b>		

## NOTES

Tract Number : 240

Description : SE 20 150 89

FSA Physical Location : NORTH DAKOTA/MCLEAN

ANSI Physical Location : NORTH DAKOTA/MCLEAN

BIA Unit Range Number :

HEL Status : NHEL: No agricultural commodity planted on undetermined fields

Wetland Status : Tract contains a wetland or farmed wetland

WL Violations : None

Owners

Other Producers

Recon ID : None

## Tract Land Data

Farm Land	Cropland	DCP Cropland	WBP	EWP	WRP	GRP	Sugarcane
157.05	149.15	149.15	0.00	0.00	0.00	0.00	0.0



## Abbreviated 156 Farm Record

## Tract 240 Continued ...

State Conservation	Other Conservation	Effective DCP Cropland	Double Cropped	CRP	MPL	DCP Ag. Rel Activity	SOD
0.00	0.00	149.15	0.00	0.00	0.00	0.00	0.00

## DCP Crop Data

Crop Name	Base Acres	CCC-505 CRP Reduction Acres	PLC Yield
Wheat	60.14	0.00	37
Flax	10.18	0.00	20
Canola	30.17	0.00	1359
Dry Peas	19.84	0.00	2155
<b>TOTAL</b>	<b>120.33</b>	<b>0.00</b>	

## NOTES

In accordance with Federal civil rights law and U.S. Department of Agriculture (USDA) civil rights regulations and policies, the USDA, its Agencies, offices, and employees, and institutions participating in or administering USDA programs are prohibited from discriminating based on race, color, national origin, religion, sex, disability, age, marital status, family/parental status, income derived from a public assistance program, political beliefs, or reprisal or retaliation for prior civil rights activity, in any program or activity conducted or funded by USDA (not all bases apply to all programs). Remedies and complaint filing deadlines vary by program or incident.

Persons with disabilities who require alternative means of communication for program information (e.g., Braille, large print, audiotape, American Sign Language, etc.) should contact the responsible Agency or USDA's TARGET Center at (202) 720-2600 (voice and TTY) or contact USDA through the Federal Relay Service at (800) 877-8339. Additionally, program information may be made available in languages other than English.

To file a program discrimination complaint, complete the USDA Program Discrimination Complaint Form, AD-3027, found online at [How to File a Program Discrimination Complaint](#) and at any USDA office or write a letter addressed to USDA and provide in the letter all of the information requested in the form. To request a copy of the complaint form, call (866) 632-9992. Submit your completed form or letter to USDA by: (1) Mail: U.S. Department of Agriculture Office of the Assistant Secretary for Civil Rights, 1400 Independence Avenue, SW Washington, D.C. 20250-9410; (2) Fax: (202) 690-7442; or (3) Email: [program.intake@usda.gov](mailto:program.intake@usda.gov). USDA is an equal opportunity provider, employer, and lender.



## Abbreviated 156 Farm Record

## Operator Name

CRP Contract Number(s) : None

Recon ID : 38-055-2016-153

Transferred From : None

ARCPLC G//F Eligibility : Eligible

## Farm Land Data

Farmland	Cropland	DCP Cropland	WBP	EWP	WRP	GRP	Sugarcane	Farm Status	Number Of Tracts
153.84	151.50	151.50	0.00	0.00	0.00	0.00	0.0	Active	1
State Conservation	Other Conservation	Effective DCP Cropland	Double Cropped			CRP	MPL	DCP Ag.Rel. Activity	SOD
0.00	0.00	151.50	0.00			0.00	0.00	0.00	0.00

## Crop Election Choice

ARC Individual	ARC County	Price Loss Coverage
None	WHEAT, FLAX, PEAS	CANOL

## DCP Crop Data

Crop Name	Base Acres	CCC-505 CRP Reduction Acres	PLC Yield	HIP
Wheat	61.07	0.00	61	
Flax	10.34	0.00	20	
Canola	30.63	0.00	1359	
Dry Peas	20.15	0.00	3338	
<b>TOTAL</b>	<b>122.19</b>	<b>0.00</b>		

## NOTES

Tract Number : 1909

Description : SW 5 149 89 less 2.3 ac in SWSW corner

FSA Physical Location : NORTH DAKOTA/MCLEAN

ANSI Physical Location : NORTH DAKOTA/MCLEAN

BIA Unit Range Number :

HEL Status : NHEL: No agricultural commodity planted on undetermined fields

Wetland Status : Tract contains a wetland or farmed wetland

WL Violations : None

Owners

Other Producers

Recon ID : None

## Tract Land Data

Farm Land	Cropland	DCP Cropland	WBP	EWP	WRP	GRP	Sugarcane
153.84	151.50	151.50	0.00	0.00	0.00	0.00	0.0



## Abbreviated 156 Farm Record

## Tract 1909 Continued ...

State Conservation	Other Conservation	Effective DCP Cropland	Double Cropped	CRP	MPL	DCP Ag. Rel Activity	SOD
0.00	0.00	151.50	0.00	0.00	0.00	0.00	0.00

## DCP Crop Data

Crop Name	Base Acres	CCC-505 CRP Reduction Acres	PLC Yield
Wheat	61.07	0.00	61
Flax	10.34	0.00	20
Canola	30.63	0.00	1359
Dry Peas	20.15	0.00	3338
<b>TOTAL</b>	<b>122.19</b>	<b>0.00</b>	

## NOTES

In accordance with Federal civil rights law and U.S. Department of Agriculture (USDA) civil rights regulations and policies, the USDA, its Agencies, offices, and employees, and institutions participating in or administering USDA programs are prohibited from discriminating based on race, color, national origin, religion, sex, disability, age, marital status, family/parental status, income derived from a public assistance program, political beliefs, or reprisal or retaliation for prior civil rights activity, in any program or activity conducted or funded by USDA (not all bases apply to all programs). Remedies and complaint filing deadlines vary by program or incident.

Persons with disabilities who require alternative means of communication for program information (e.g., Braille, large print, audiotape, American Sign Language, etc.) should contact the responsible Agency or USDA's TARGET Center at (202) 720-2600 (voice and TTY) or contact USDA through the Federal Relay Service at (800) 877-8339. Additionally, program information may be made available in languages other than English.

To file a program discrimination complaint, complete the USDA Program Discrimination Complaint Form, AD-3027, found online at [How to File a Program Discrimination Complaint](#) and at any USDA office or write a letter addressed to USDA and provide in the letter all of the information requested in the form. To request a copy of the complaint form, call (866) 632-9992. Submit your completed form or letter to USDA by: (1) Mail: U.S. Department of Agriculture Office of the Assistant Secretary for Civil Rights, 1400 Independence Avenue, SW Washington, D.C. 20250-9410; (2) Fax: (202) 690-7442; or (3) Email: [program.intake@usda.gov](mailto:program.intake@usda.gov). USDA is an equal opportunity provider, employer, and lender.