



United States
Department of
Agriculture

Emmons County, North Dakota

Farm **6147**



Common Land Unit

- Tract Boundary
- PLSS
- Non-Cropland
- Cropland

Wetland Determination Identifiers

- Restricted Use
- Limited Restrictions
- Exempt from Conservation Compliance Provisions

Unless Otherwise Noted:
All crops are for grain
All crops are non-irrigated
Shares are 100% to Operator

2022 Program Year
Map Created May 03, 2022

S32 T134N R75W
Phy Cnty: Emmons

0 235 470 940
Feet

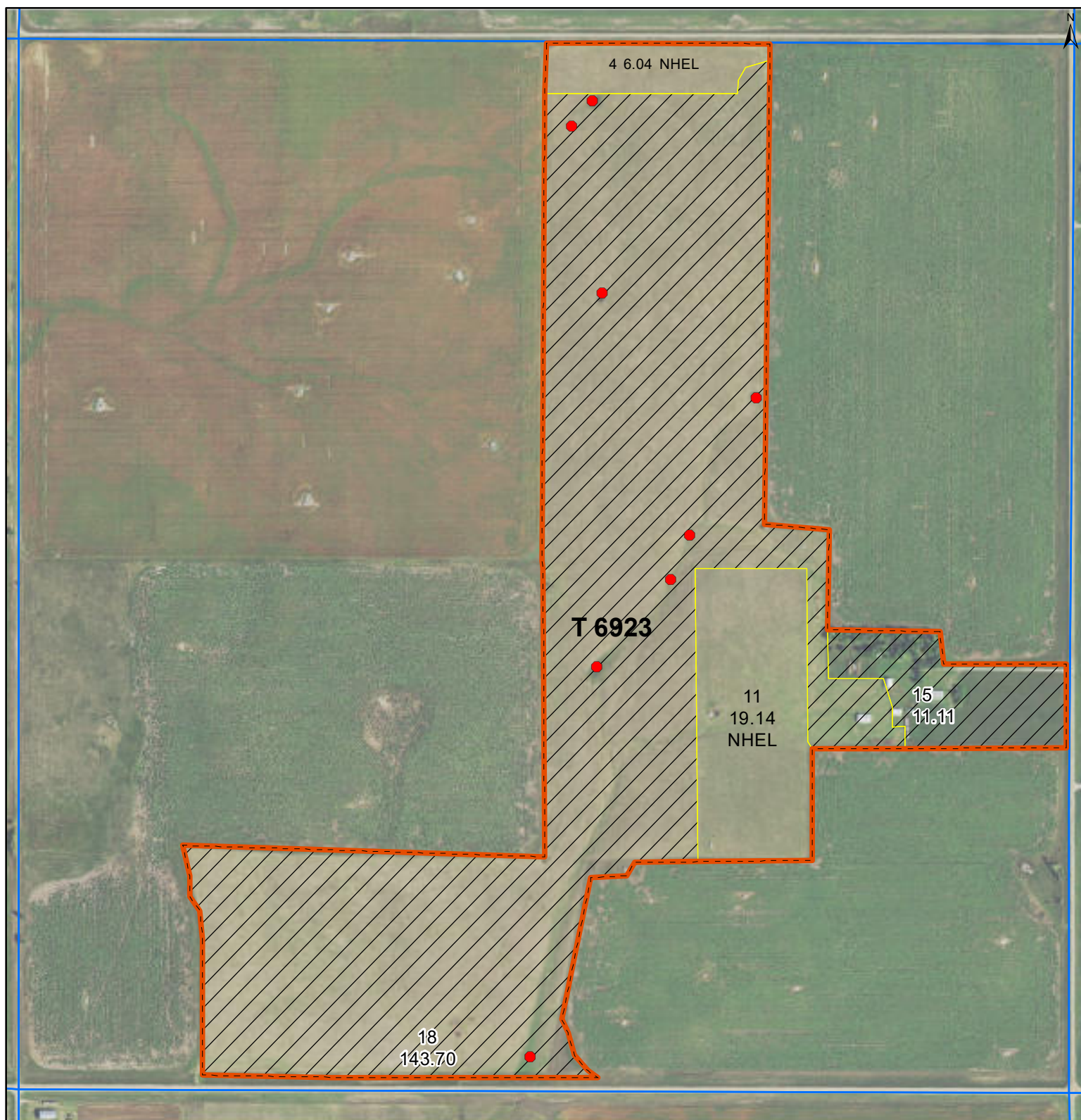
United States Department of Agriculture (USDA) Farm Service Agency (FSA) maps are for FSA Program administration only. This map does not represent a legal survey or reflect actual ownership; rather it depicts the information provided directly from the producer and/or National Agricultural Imagery Program (NAIP) imagery. The producer accepts the data 'as is' and assumes all risks associated with its use. USDA-FSA assumes no responsibility for actual or consequential damage incurred as a result of any user's reliance on this data outside FSA Programs. Wetland identifiers do not represent the size, shape, or specific determination of the area. Refer to your original determination (CPA-026 and attached maps) for exact boundaries and determinations or contact USDA Natural Resources Conservation Service (NRCS). **The imagery displayed on this map was collected in calendar year 2021.**



United States
Department of
Agriculture

Emmons County, North Dakota

Farm 6148



Common Land Unit

- Tract Boundary
- PLSS
- Non-Cropland
- Cropland

Wetland Determination Identifiers

- Restricted Use
- Limited Restrictions
- Exempt from Conservation Compliance Provisions

Unless Otherwise Noted:
All crops are for grain
All crops are non-irrigated
Shares are 100% to Operator

2022 Program Year
Map Created May 03, 2022

S32 T134N R75W
Phy Cnty: Emmons

0 235 470 940
Feet

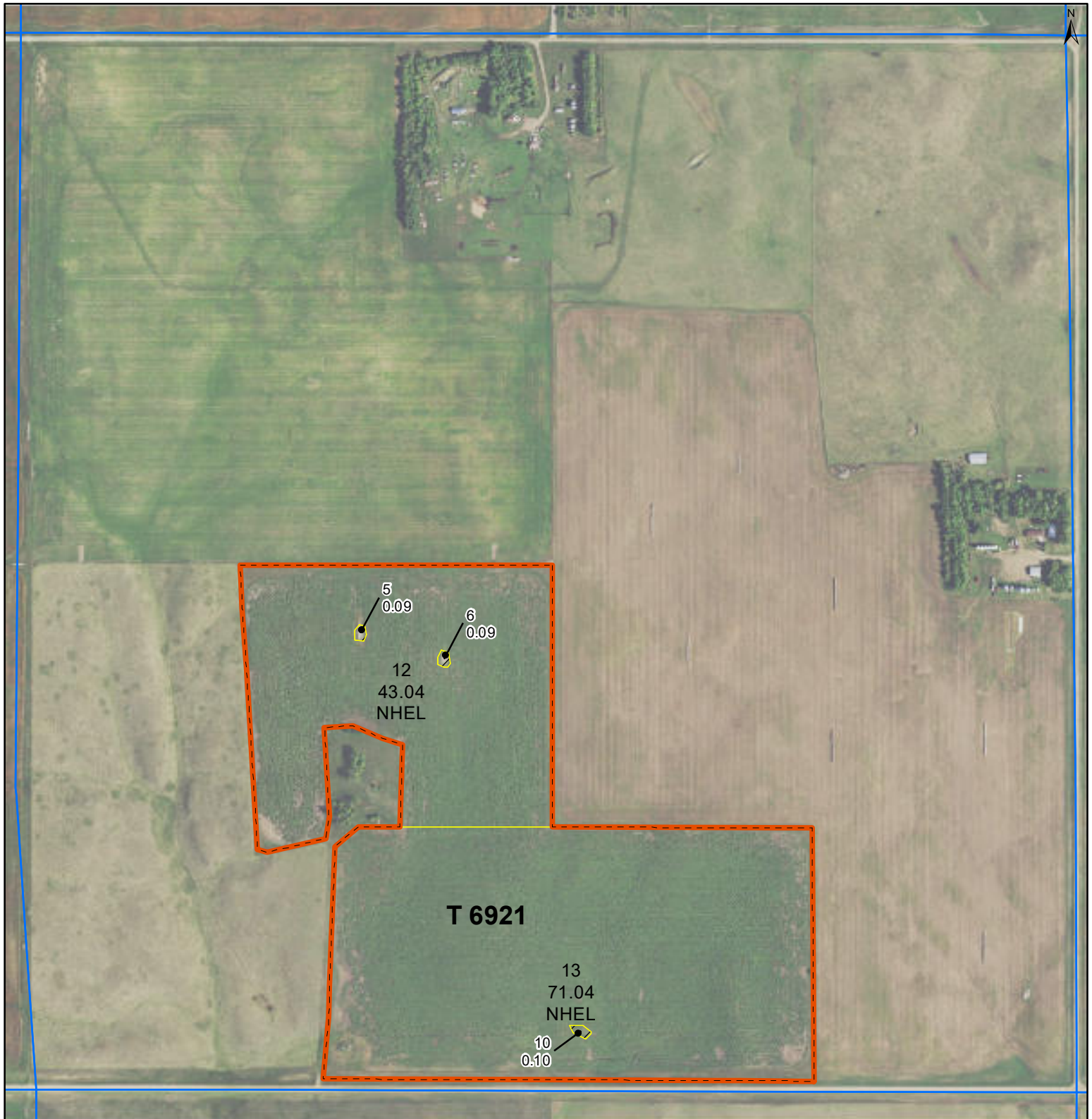
United States Department of Agriculture (USDA) Farm Service Agency (FSA) maps are for FSA Program administration only. This map does not represent a legal survey or reflect actual ownership; rather it depicts the information provided directly from the producer and/or National Agricultural Imagery Program (NAIP) imagery. The producer accepts the data 'as is' and assumes all risks associated with its use. USDA-FSA assumes no responsibility for actual or consequential damage incurred as a result of any user's reliance on this data outside FSA Programs. Wetland identifiers do not represent the size, shape, or specific determination of the area. Refer to your original determination (CPA-026 and attached maps) for exact boundaries and determinations or contact USDA Natural Resources Conservation Service (NRCS). **The imagery displayed on this map was collected in calendar year 2021.**



United States
Department of
Agriculture

Emmons County, North Dakota

Farm **6147**



Common Land Unit

- Tract Boundary
- PLSS
- Non-Cropland
- Cropland

Wetland Determination Identifiers

- Restricted Use
- Limited Restrictions
- Exempt from Conservation Compliance Provisions

Unless Otherwise Noted:

All crops are for grain
All crops are non-irrigated
Shares are 100% to Operator

2022 Program Year

Map Created May 03, 2022

S34 T134N R75W

Phy Cnty: Emmons

0 237.5 475 950
Feet

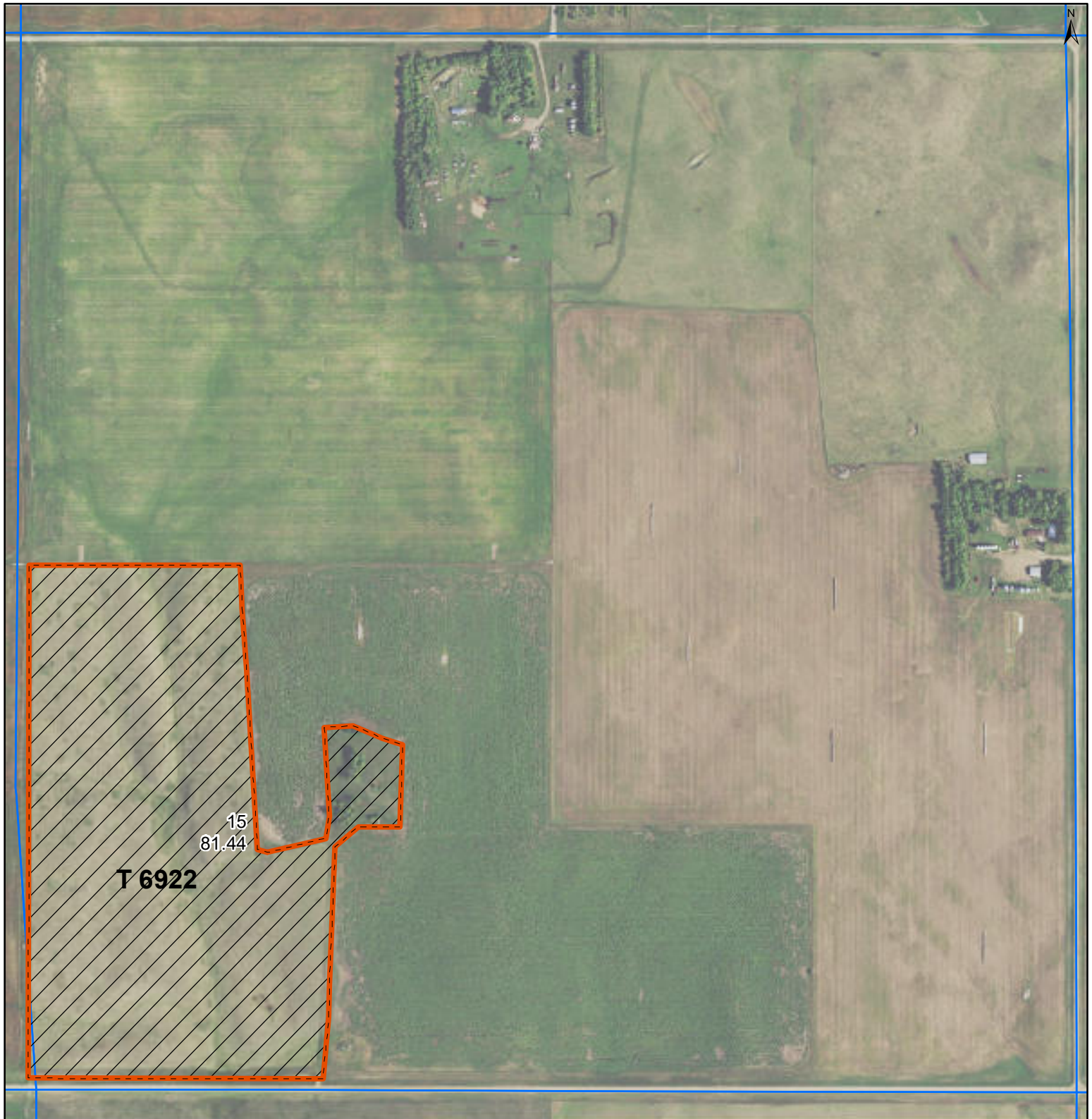
United States Department of Agriculture (USDA) Farm Service Agency (FSA) maps are for FSA Program administration only. This map does not represent a legal survey or reflect actual ownership; rather it depicts the information provided directly from the producer and/or National Agricultural Imagery Program (NAIP) imagery. The producer accepts the data 'as is' and assumes all risks associated with its use. USDA-FSA assumes no responsibility for actual or consequential damage incurred as a result of any user's reliance on this data outside FSA Programs. Wetland identifiers do not represent the size, shape, or specific determination of the area. Refer to your original determination (CPA-026 and attached maps) for exact boundaries and determinations or contact USDA Natural Resources Conservation Service (NRCS). **The imagery displayed on this map was collected in calendar year 2021.**



United States
Department of
Agriculture

Emmons County, North Dakota

Farm **6148**



Common Land Unit PLSS

- Non-Cropland
- Tract Boundary

Wetland Determination Identifiers

- Restricted Use
- ▼ Limited Restrictions
- Exempt from Conservation Compliance Provisions

Unless Otherwise Noted:
All crops are for grain
All crops are non-irrigated
Shares are 100% to Operator

2022 Program Year
Map Created May 03, 2022

S34 T134N R75W
Phy Cnty: Emmons

0 237.5 475 950
Feet

United States Department of Agriculture (USDA) Farm Service Agency (FSA) maps are for FSA Program administration only. This map does not represent a legal survey or reflect actual ownership; rather it depicts the information provided directly from the producer and/or National Agricultural Imagery Program (NAIP) imagery. The producer accepts the data 'as is' and assumes all risks associated with its use. USDA-FSA assumes no responsibility for actual or consequential damage incurred as a result of any user's reliance on this data outside FSA Programs. Wetland identifiers do not represent the size, shape, or specific determination of the area. Refer to your original determination (CPA-026 and attached maps) for exact boundaries and determinations or contact USDA Natural Resources Conservation Service (NRCS). **The imagery displayed on this map was collected in calendar year 2021.**



United States
Department of
Agriculture

Emmons County, North Dakota

Farm **6148**



Common Land Unit

- Tract Boundary
- PLSS
- Non-Cropland
- Cropland

Wetland Determination Identifiers

- Restricted Use
- Limited Restrictions
- Exempt from Conservation Compliance Provisions

Unless Otherwise Noted:

All crops are for grain
All crops are non-irrigated
Shares are 100% to Operator

2022 Program Year

Map Created May 03, 2022

S3 T133N R75W

Phy Cnty: Emmons

0 245 490 980
Feet

United States Department of Agriculture (USDA) Farm Service Agency (FSA) maps are for FSA Program administration only. This map does not represent a legal survey or reflect actual ownership; rather it depicts the information provided directly from the producer and/or National Agricultural Imagery Program (NAIP) imagery. The producer accepts the data 'as is' and assumes all risks associated with its use. USDA-FSA assumes no responsibility for actual or consequential damage incurred as a result of any user's reliance on this data outside FSA Programs. Wetland identifiers do not represent the size, shape, or specific determination of the area. Refer to your original determination (CPA-026 and attached maps) for exact boundaries and determinations or contact USDA Natural Resources Conservation Service (NRCS). **The imagery displayed on this map was collected in calendar year 2021.**



Abbreviated 156 Farm Record

Operator Name

CRP Contract Number(s) : None

Recon ID : 38-029-2019-20

Transferred From : None

ARCPLC G//F Eligibility : Eligible

Farm Land Data

| Farmland | Cropland | DCP Cropland | WBP | EWP | WRP | GRP | Sugarcane | Farm Status | Number Of Tracts |
|--------------------|--------------------|------------------------|----------------|------|------|------|-----------|----------------------|------------------|
| 403.15 | 379.57 | 379.57 | 0.00 | 0.00 | 0.00 | 0.00 | 0.0 | Active | 2 |
| State Conservation | Other Conservation | Effective DCP Cropland | Double Cropped | | | CRP | MPL | DCP Ag.Rel. Activity | SOD |
| 0.00 | 0.00 | 379.57 | 0.00 | | | 0.00 | 0.00 | 0.00 | 0.00 |

Crop Election Choice

| ARC Individual | ARC County | Price Loss Coverage |
|----------------|------------|---------------------|
| None | CORN | WHEAT, OATS, SNFLR |

DCP Crop Data

| Crop Name | Base Acres | CCC-505 CRP Reduction Acres | PLC Yield | HIP |
|--------------|---------------|-----------------------------|-----------|-----|
| Wheat | 70.43 | 0.00 | 31 | |
| Oats | 46.54 | 0.00 | 44 | |
| Corn | 139.31 | 0.00 | 77 | 0 |
| Sunflowers | 73.30 | 0.00 | 1781 | |
| TOTAL | 329.58 | 0.00 | | |

NOTES

Tract Number : 6921

Description : SWSE, FCL ESW 34-134-75

FSA Physical Location : NORTH DAKOTA/EMMONS

ANSI Physical Location : NORTH DAKOTA/EMMONS

BIA Unit Range Number :

HEL Status : NHEL: No agricultural commodity planted on undetermined fields

Wetland Status : Tract does not contain a wetland

WL Violations : None

Owners

Other Producers

Recon ID : 38-029-2019-18

Tract Land Data

| Farm Land | Cropland | DCP Cropland | WBP | EWP | WRP | GRP | Sugarcane |
|-----------|----------|--------------|------|------|------|------|-----------|
| 114.36 | 114.08 | 114.08 | 0.00 | 0.00 | 0.00 | 0.00 | 0.0 |



Abbreviated 156 Farm Record

Tract 6921 Continued ...

| State Conservation | Other Conservation | Effective DCP Cropland | Double Cropped | CRP | MPL | DCP Ag. Rel Activity | SOD |
|--------------------|--------------------|------------------------|----------------|------|------|----------------------|------|
| 0.00 | 0.00 | 114.08 | 0.00 | 0.00 | 0.00 | 0.00 | 0.00 |

DCP Crop Data

| Crop Name | Base Acres | CCC-505 CRP Reduction Acres | PLC Yield |
|--------------|--------------|-----------------------------|-----------|
| Wheat | 21.17 | 0.00 | 31 |
| Oats | 13.99 | 0.00 | 44 |
| Corn | 41.88 | 0.00 | 77 |
| Sunflowers | 22.03 | 0.00 | 1781 |
| TOTAL | 99.07 | 0.00 | |

NOTES

| |
|--|
| |
|--|

Tract Number : 6924

Description : FCL SW, NE & SE 32-134-75

FSA Physical Location : NORTH DAKOTA/EMMONS

ANSI Physical Location : NORTH DAKOTA/EMMONS

BIA Unit Range Number :

HEL Status : NHEL: No agricultural commodity planted on undetermined fields

Wetland Status : Tract contains a wetland or farmed wetland

WL Violations : None

Owners

Other Producers

Recon ID : 38-029-2019-19

Tract Land Data

| Farm Land | Cropland | DCP Cropland | WBP | EWP | WRP | GRP | Sugarcane |
|--------------------|--------------------|------------------------|----------------|------|------|----------------------|-----------|
| 288.79 | 265.49 | 265.49 | 0.00 | 0.00 | 0.00 | 0.00 | 0.0 |
| State Conservation | Other Conservation | Effective DCP Cropland | Double Cropped | CRP | MPL | DCP Ag. Rel Activity | SOD |
| 0.00 | 0.00 | 265.49 | 0.00 | 0.00 | 0.00 | 0.00 | 0.00 |

DCP Crop Data

| Crop Name | Base Acres | CCC-505 CRP Reduction Acres | PLC Yield |
|--------------|---------------|-----------------------------|-----------|
| Wheat | 49.26 | 0.00 | 31 |
| Oats | 32.55 | 0.00 | 44 |
| Corn | 97.43 | 0.00 | 77 |
| Sunflowers | 51.27 | 0.00 | 1781 |
| TOTAL | 230.51 | 0.00 | |



Abbreviated 156 Farm Record

| | |
|------------------------|--|
| Tract Number | : 770 |
| Description | : SW3-133-75 |
| FSA Physical Location | : NORTH DAKOTA/EMMONS |
| ANSI Physical Location | : NORTH DAKOTA/EMMONS |
| BIA Unit Range Number | : |
| HEL Status | : NHEL: No agricultural commodity planted on undetermined fields |
| Wetland Status | : Tract does not contain a wetland |
| WL Violations | : None |
| Owners | |
| Other Producers | |
| Recon ID | : None |

| Tract Land Data | | | | | | | |
|-----------------|----------|--------------|------|------|------|------|-----------|
| Farm Land | Cropland | DCP Cropland | WBP | EWP | WRP | GRP | Sugarcane |
| 154.83 | 81.82 | 81.82 | 0.00 | 0.00 | 0.00 | 0.00 | 0.0 |

Tract 770 Continued ...

| State Conservation | Other Conservation | Effective DCP Cropland | Double Cropped | CRP | MPL | DCP Ag. Rel Activity | SOD |
|--------------------|--------------------|------------------------|----------------|------|------|----------------------|------|
| 0.00 | 0.00 | 81.82 | 0.00 | 0.00 | 0.00 | 0.00 | 0.00 |

| DCP Crop Data | | | |
|---------------|------------|-----------------------------|-----------|
| Crop Name | Base Acres | CCC-505 CRP Reduction Acres | PLC Yield |
| Wheat | 15.19 | 0.00 | 31 |
| Oats | 10.03 | 0.00 | 44 |
| Corn | 30.04 | 0.00 | 77 |
| Sunflowers | 15.80 | 0.00 | 1781 |
| TOTAL | 71.06 | 0.00 | |

| NOTES |
|-------|
| |